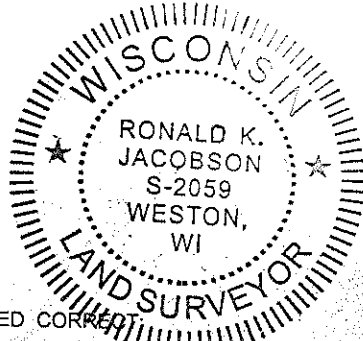


LINCOLN COUNTY U.S. PUBLIC LAND SECTION SUMMARY

SECTION 36
TOWNSHIP 33N
RANGE 4 E

CORNING
CITY, VILLAGE, TOWN



CERTIFIED CORRECT

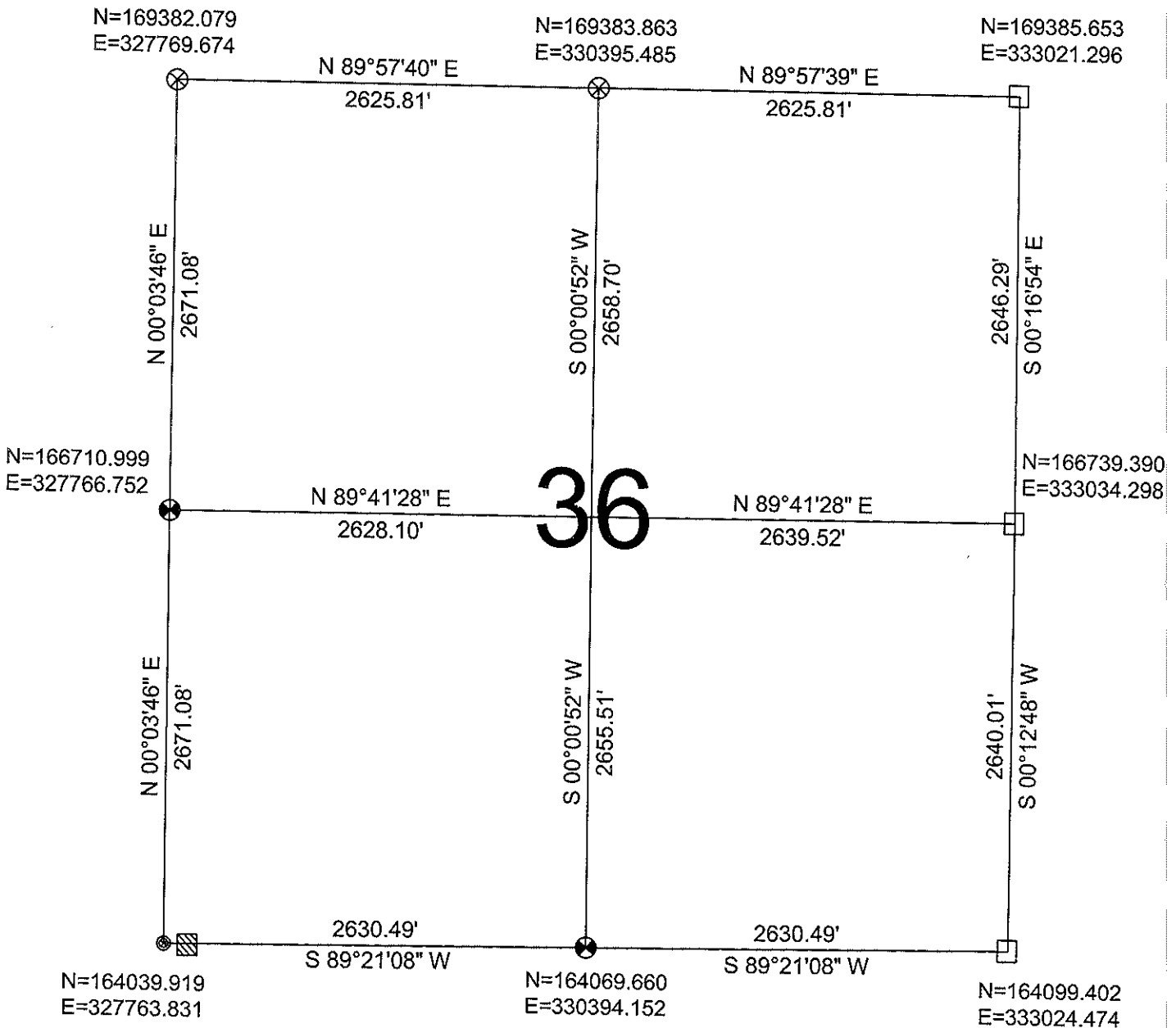
Ronald Jacobson RLS 2059-008

Registered Land Surveyor

DATE: September 26, 2008

COORDINATES ARE REFERENCED TO LINCOLN COUNTY COORDINATE SYSTEM AS DEVELOPED BY THE WI. DEPARTMENT OF TRANSPORTATION AND ARE BASED ON GPS OBSERVATIONS TO CONTROL POINTS AS SUPPLIED BY LINCOLN COUNTY.

N
NOT TO SCALE
BEARINGS REFERENCED TO LINCOLN COUNTY COORDINATE SYSTEM



LEGEND

- FOUND STONE MONUMENT
- FOUND 1.5" IRON PIPE WITH CAP
- FOUND LINCOLN COUNTY BERNSTEN MONUMENT
- SET LINCOLN COUNTY BERNSTEN MONUMENT
- FOUND WOOD POST

RECEIVED BY LINCOLN COUNTY

SURVEYOR THIS 29TH DAY

OF September 29 08

COUNTY SURVEYOR

DRAFTED BY: Rutzen

DATE: September 12, 2008

CWE, Inc.
5707 Schofield Ave.
Weston, Wisconsin 54476
(715) 359-9400

Sec. 36