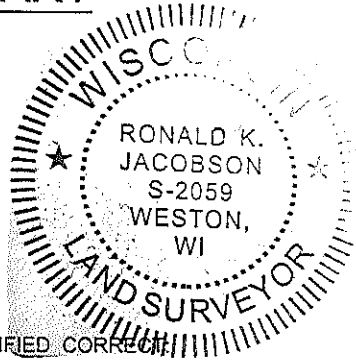


LINCOLN COUNTY U.S. PUBLIC LAND
SECTION SUMMARY

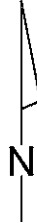
SECTION 32
 TOWNSHIP 33N
 RANGE 4 E

CORNING
 CITY, VILLAGE, TOWN



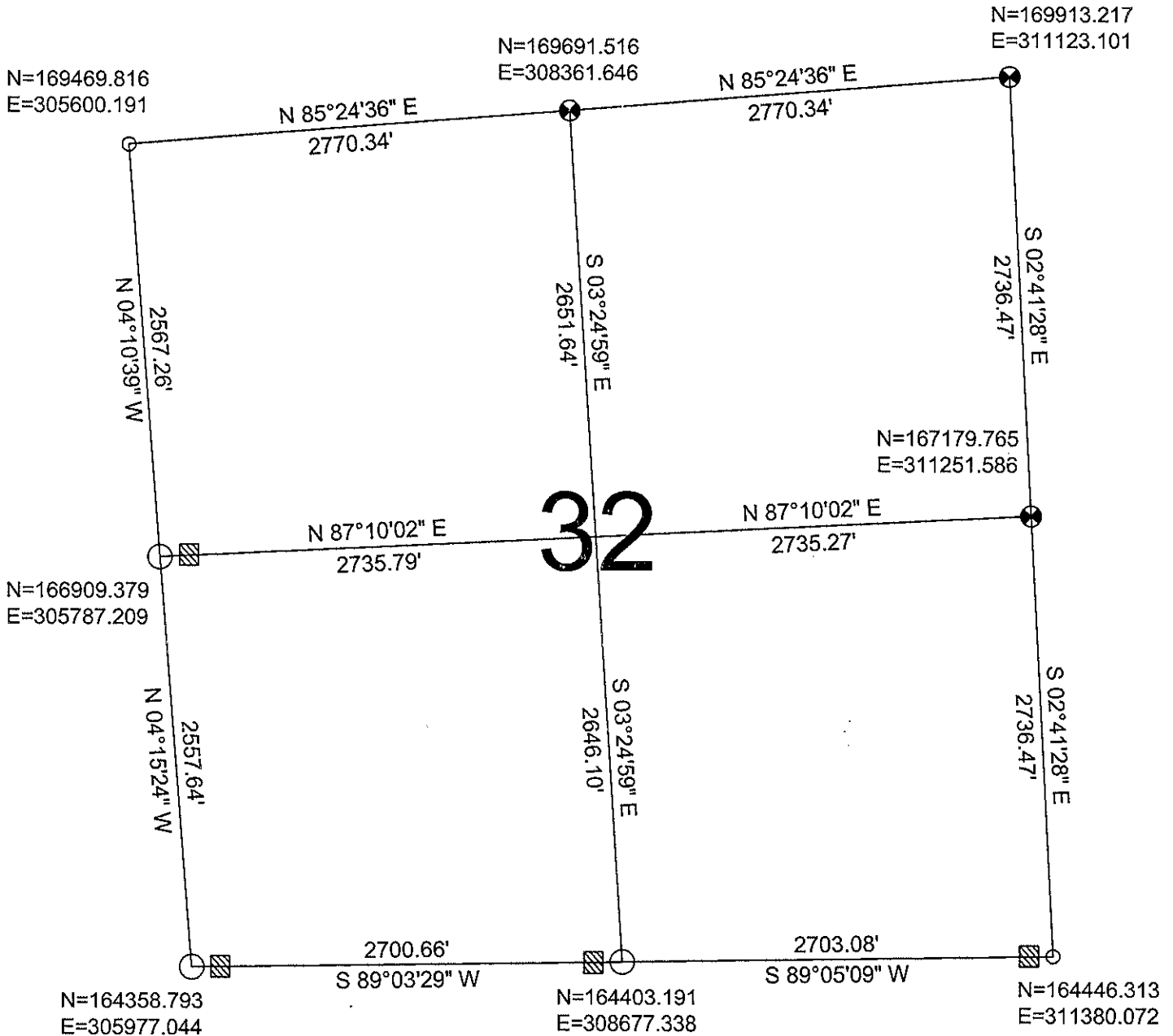
CERTIFIED CORRECT

Ronald Jacobson
 Ronald Jacobson RLS 2059-008
 Registered Land Surveyor
 DATE: September 26, 2008



NOT TO SCALE
 BEARINGS REFERENCED
 TO LINCOLN COUNTY
 COORDINATE SYSTEM

COORDINATES ARE REFERENCED
 TO LINCOLN COUNTY COORDINATE
 SYSTEM AS DEVELOPED BY THE WI.
 DEPARTMENT OF TRANSPORTATION
 AND ARE BASED ON GPS OBSERVATIONS
 TO CONTROL POINTS AS SUPPLIED BY
 LINCOLN COUNTY.



LEGEND

- SET LINCOLN COUNTY BERNSTEIN MONUMENT
- FOUND 2.0" IRON PIPE
- FOUND 1.0" IRON PIPE
- ▨ FOUND WOOD POST

RECEIVED BY LINCOLN COUNTY
 SURVEYOR THIS 29TH DAY
 OF September 20 08
Tom Dall
 COUNTY SURVEYOR
 DRAFTED BY: Rutzen
 DATE: September 12, 2008

CWE, Inc.
 5707 Schofield Ave.
 Weston, Wisconsin 54476
 (715) 359-9400

Sec. 32