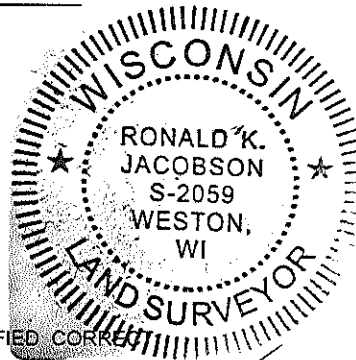


# LINCOLN COUNTY U.S. PUBLIC LAND SECTION SUMMARY

SECTION 28  
TOWNSHIP 33N  
RANGE 4 E

CORNING  
CITY, VILLAGE, TOWN



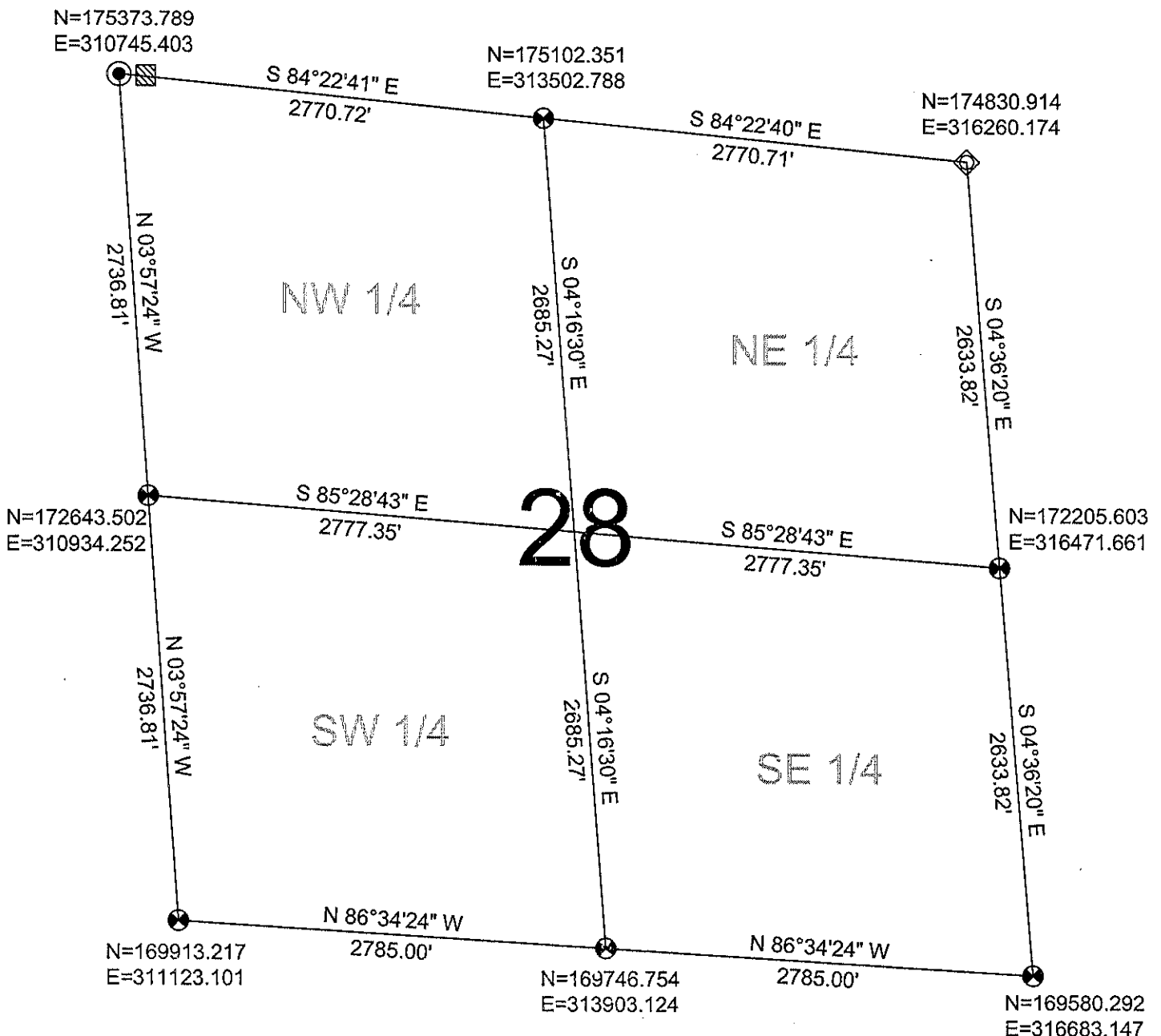
CERTIFIED CORRECT

*Ronald Jacobson*  
Ronald Jacobson RLS 2059-008  
Registered Land Surveyor

DATE: November 24, 2008

COORDINATES ARE REFERENCED TO LINCOLN COUNTY COORDINATE SYSTEM AS DEVELOPED BY THE WI. DEPARTMENT OF TRANSPORTATION AND ARE BASED ON GPS OBSERVATIONS TO CONTROL POINTS AS SUPPLIED BY LINCOLN COUNTY.

N  
NOT TO SCALE  
BEARINGS REFERENCED TO LINCOLN COUNTY COORDINATE SYSTEM



RECEIVED BY LINCOLN COUNTY

**LEGEND**

- CALCULATED PER COORDINATES GIVEN BY LINCOLN COUNTY SURVEYOR
- FOUND WOOD POST
- FOUND 2.0" IRON PIPE
- SET LINCOLN COUNTY BERNSTEN MOMUMENT

SURVEYOR THIS 26<sup>TH</sup> DAY  
OF November 20 08

*Tommy Doherty*  
COUNTY SURVEYOR

DRAFTED BY: Rutzen  
DATE: November 21, 2008

CWE, Inc.  
5707 Schofield Ave.  
Weston, Wisconsin 54476  
(715) 359-9400