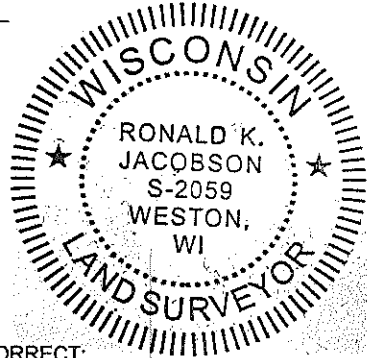


LINCOLN COUNTY U.S. PUBLIC LAND SECTION SUMMARY

SECTION 26
TOWNSHIP 33N
RANGE 4 E

CORNING
CITY, VILLAGE, TOWN



COORDINATES ARE REFERENCED TO LINCOLN COUNTY COORDINATE SYSTEM AS DEVELOPED BY THE WI. DEPARTMENT OF TRANSPORTATION AND ARE BASED ON GPS OBSERVATIONS TO CONTROL POINTS AS SUPPLIED BY LINCOLN COUNTY.

CERTIFIED CORRECT:

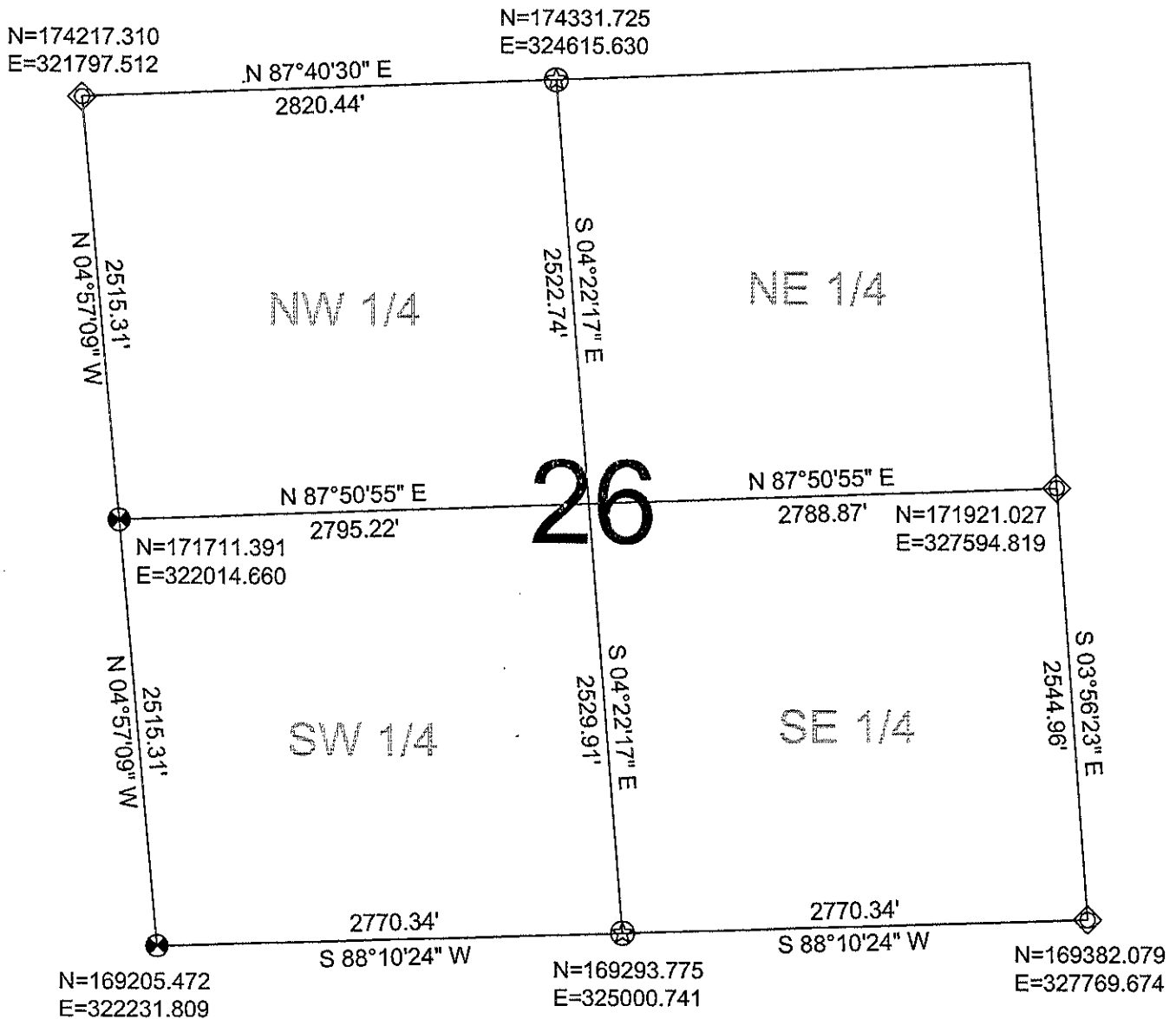
Ronald Jacobson

Ronald Jacobson RLS 2059-008

Registered Land Surveyor

DATE: November 24, 2008

N
NOT TO SCALE
BEARINGS REFERENCED
TO LINCOLN COUNTY
COORDINATE SYSTEM



LEGEND

- ◇ CALCULATED PER COORDINATES GIVEN BY LINCOLN COUNTY SURVEYOR
- ☆ SET LINCOLN COUNTY ALUMINUM SWAMP MONUMENT
- SET LINCOLN COUNTY BERNSTEIN MOMUMENT

RECEIVED BY LINCOLN COUNTY
SURVEYOR THIS 26TH DAY
OF November 20 08
Rozm Dalk
COUNTY SURVEYOR

DRAFTED BY: Rützen
DATE: November 21, 2008

CWE, Inc.
5707 Schofield Ave.
Weston, Wisconsin 54476
(715) 359-9400