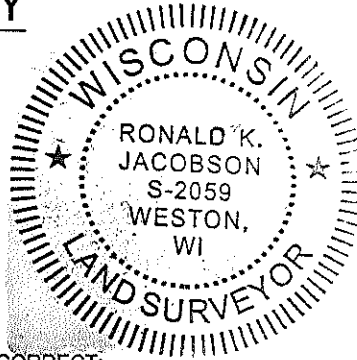


LINCOLN COUNTY U.S. PUBLIC LAND SECTION SUMMARY

SECTION 24
TOWNSHIP 33N
RANGE 4 E

CORNING
CITY, VILLAGE, TOWN

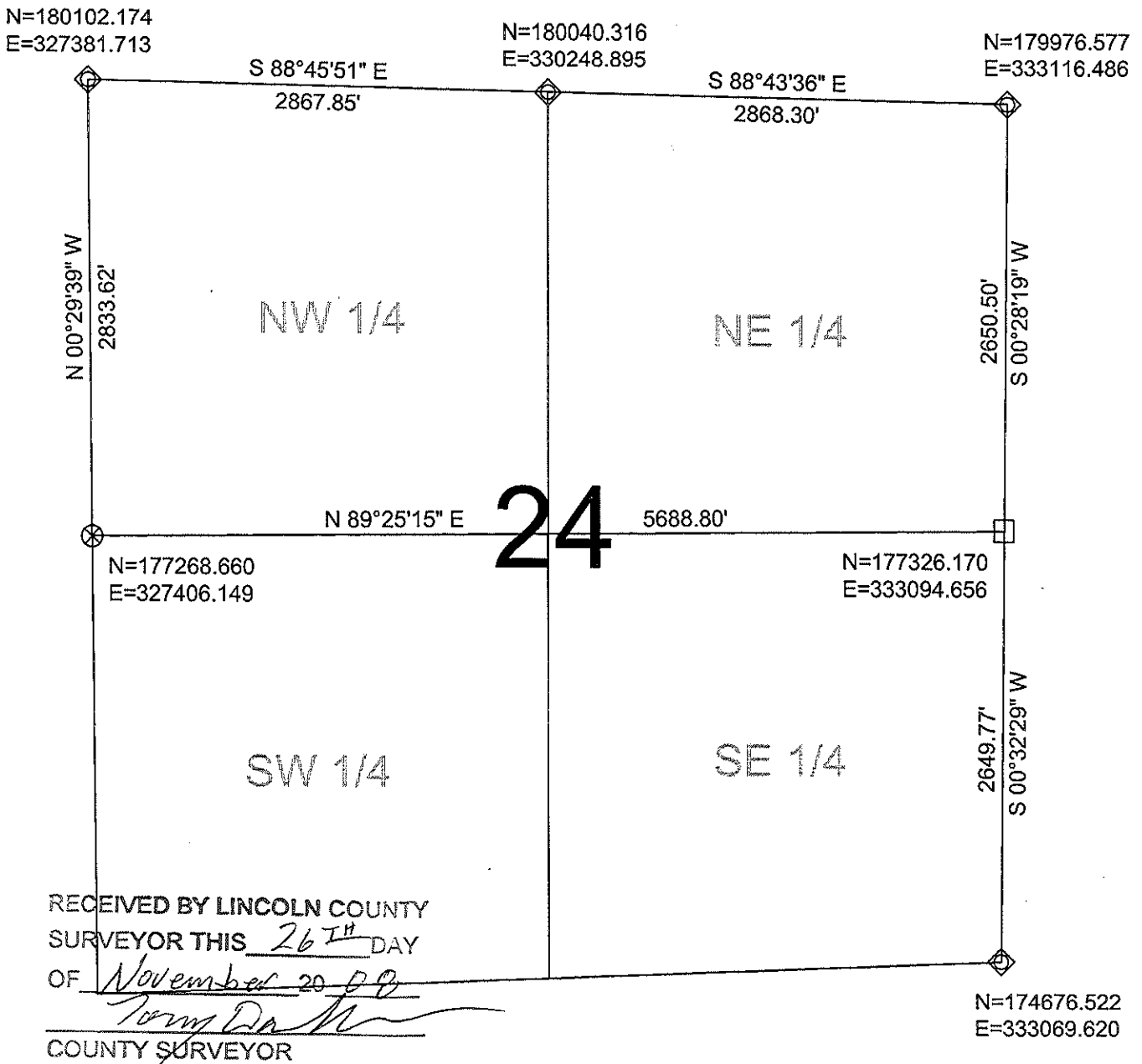


COORDINATES ARE REFERENCED TO LINCOLN COUNTY COORDINATE SYSTEM AS DEVELOPED BY THE WI. DEPARTMENT OF TRANSPORTATION AND ARE BASED ON GPS OBSERVATIONS TO CONTROL POINTS AS SUPPLIED BY LINCOLN COUNTY.

CERTIFIED CORRECT:

Ronald Jacobson
Ronald Jacobson RLS 2059-008
Registered Land Surveyor
DATE: November 24, 2008

N
NOT TO SCALE
BEARINGS REFERENCED TO LINCOLN COUNTY COORDINATE SYSTEM



LEGEND

- ◇ CALCULATED PER COORDINATES GIVEN BY LINCOLN COUNTY SURVEYOR
- FOUND STONE MONUMENT
- ⊗ FOUND LINCOLN COUNTY BERNSTEN MONUMENT

DRAFTED BY: Rutzen
DATE: November 21, 2008

CWE, Inc.
5707 Schofield Ave.
Weston, Wisconsin 54476
(715) 359-9400