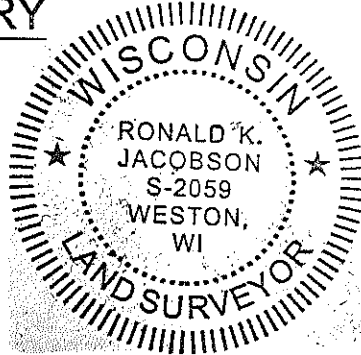


# LINCOLN COUNTY U.S. PUBLIC LAND SECTION SUMMARY

SECTION 22  
TOWNSHIP 33N  
RANGE 4 E

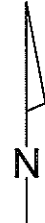


**CORNING**  
CITY, VILLAGE, TOWN

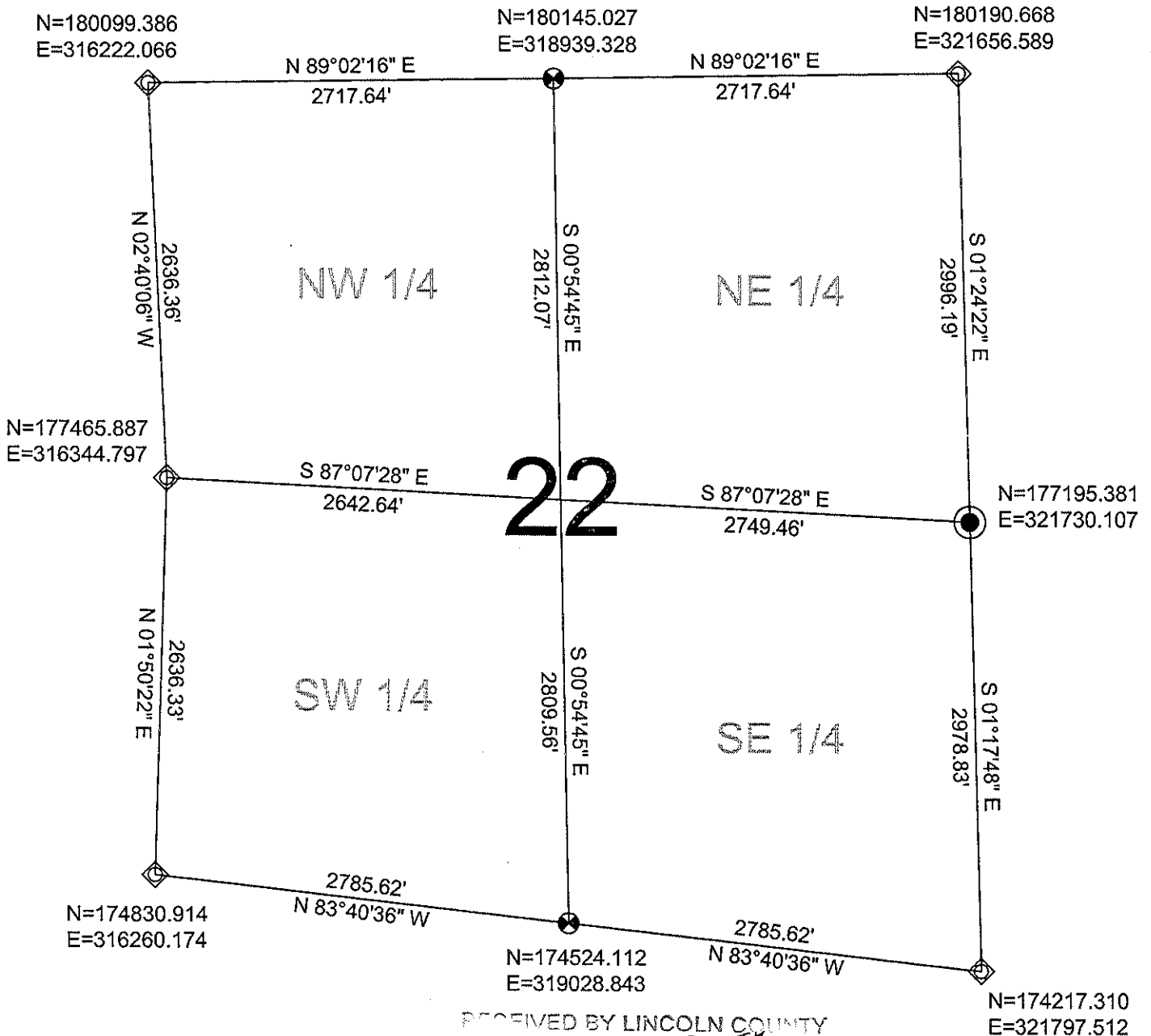
COORDINATES ARE REFERENCED TO LINCOLN COUNTY COORDINATE SYSTEM AS DEVELOPED BY THE WI. DEPARTMENT OF TRANSPORTATION AND ARE BASED ON GPS OBSERVATIONS TO CONTROL POINTS AS SUPPLIED BY LINCOLN COUNTY.

CERTIFIED CORRECT:

*Ronald Jacobson*  
Ronald Jacobson RLS 2059-008  
Registered Land Surveyor  
DATE: November 24, 2008



NOT TO SCALE  
BEARINGS REFERENCED TO LINCOLN COUNTY COORDINATE SYSTEM



RECEIVED BY LINCOLN COUNTY

FOR THIS 26<sup>TH</sup> DAY  
OF November 20 08

*Tony Dall*  
COUNTY SURVEYOR

**LEGEND**

- ◇ CALCULATED PER COORDINATES GIVEN BY LINCOLN COUNTY SURVEYOR
- FOUND 4" IRON PIPE
- ⊗ SET LINCOLN COUNTY BERNSTEN MOMUMENT

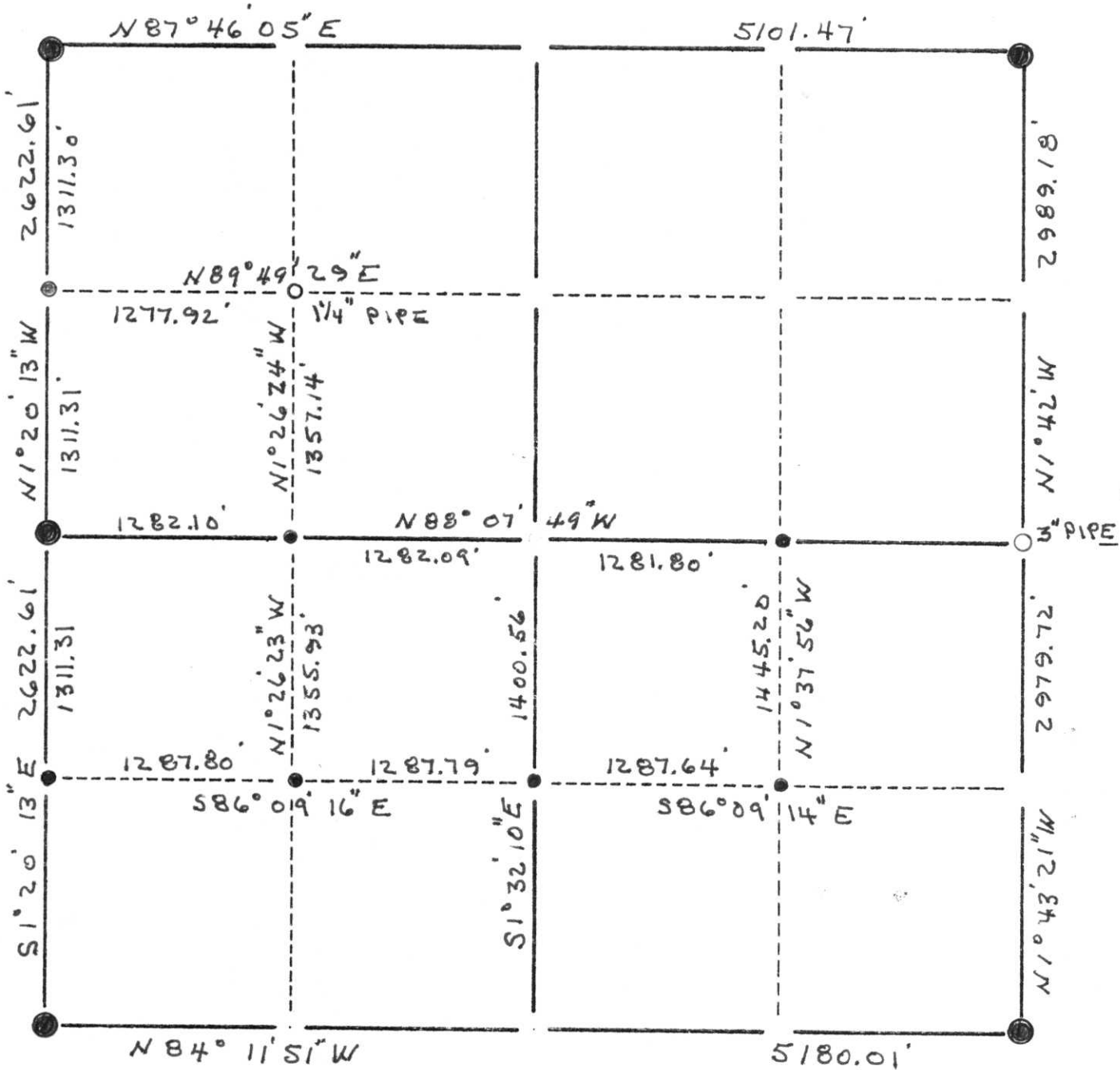
DRAFTED BY: Rutzen  
DATE: November 21, 2008

CWE, Inc.  
5707 Schofield Ave.  
Weston, Wisconsin 54476  
(715) 359-9400

# LINCOLN COUNTY

## SECTION SUMMARY

22 - 33 - 4  
 Section Town Range  
 CORNING  
 Township



### LEGEND

- ⊕ - Harrison Cast Iron Monument
- - Stone or Concrete Monument
- - 2" Iron Pipe
- - 1" Iron Pipe
- - Iron Bar
- △ - RR Spike
- - PK Nail
- - Other - Berntsen Monument
- ◇ - \_\_\_\_\_
- ▲ - \_\_\_\_\_

Bearings are referenced to the East line of the NE $\frac{1}{4}$  of Section 22 as shown on the map of the survey of sections 23 & 24 by Genisot Eng. Co. 2-23-61. The west line of Section 22 was established by single proportionate measurement from the SW corner of Section 34 to the NW Corner of Section 22.



RECEIVED AT LINCOLN COUNTY  
 COURTHOUSE THIS 28th DAY  
 OF Jan 19 99  
 Pat Prebe  
 LAND INFORMATION OFFICE

*Robert K. Fergot*  
 Robert K. Fergot 1-28-99

M:Q - 13:17