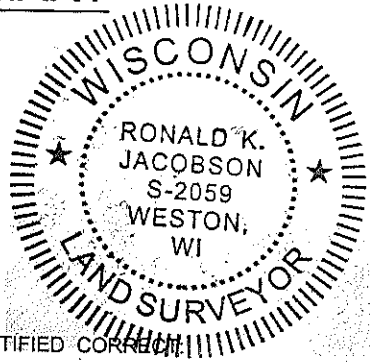


LINCOLN COUNTY U.S. PUBLIC LAND SECTION SUMMARY

SECTION 14
TOWNSHIP 33N
RANGE 4 E

CORNING

OFFICE, VILLAGE, TOWN



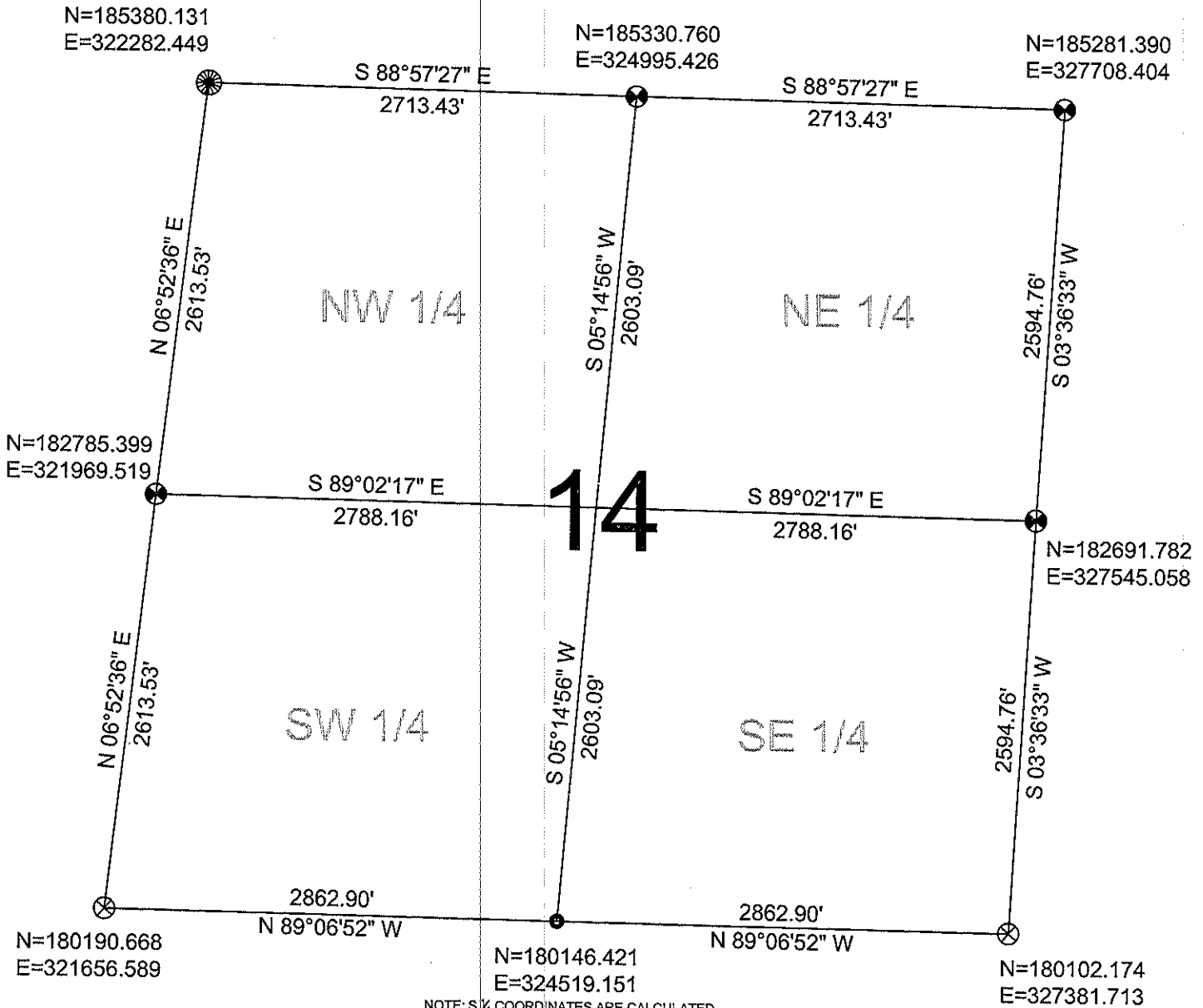
CERTIFIED CORRECT

Ronald Jacobson
Ronald Jacobson RLS 2059-008
Registered Land Surveyor

DATE: November 7, 2008

COORDINATES ARE REFERENCED TO LINCOLN COUNTY COORDINATE SYSTEM AS DEVELOPED BY THE WI. DEPARTMENT OF TRANSPORTATION AND ARE BASED ON GPS OBSERVATIONS TO CONTROL POINTS AS SUPPLIED BY LINCOLN COUNTY.

NOT TO SCALE
BEARINGS REFERENCED TO LINCOLN COUNTY COORDINATE SYSTEM



NOTE: SIX COORDINATES ARE CALCULATED PER PLAT OF SURVEY BY FAVORITE SURVEYING, S.C. DATED MARCH 14, 2005

LEGEND

- PLSS CORNER (NOT SHOT)
- ⊗ FOUND AXLE
- ⊗ FOUND LINCOLN COUNTY BERNSTEN MOMUMENT
- ⊗ SET LINCOLN COUNTY BERNSTEN MOMUMENT

RECEIVED BY LINCOLN COUNTY

SURVEYOR THIS 7TH DAY

OF November 20, 08

Zany Dahn

COUNTY SURVEYOR

DRAFTED BY: Rutzen
DATE: November 6, 2008

CWE, Inc.
5707 Schofield Ave.
Weston, Wisconsin 54476
(715) 359-9400

Sec 14