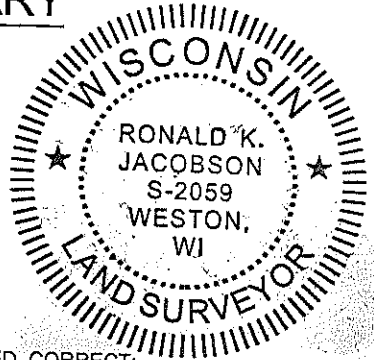


LINCOLN COUNTY U.S. PUBLIC LAND SECTION SUMMARY

SECTION 12
TOWNSHIP 33N
RANGE 4 E

CORNING
CITY, VILLAGE, TOWN

RECEIVED BY LINCOLN COUNTY
SURVEYOR THIS 24TH DAY
OF October 2008
Tom Dahl
COUNTY SURVEYOR



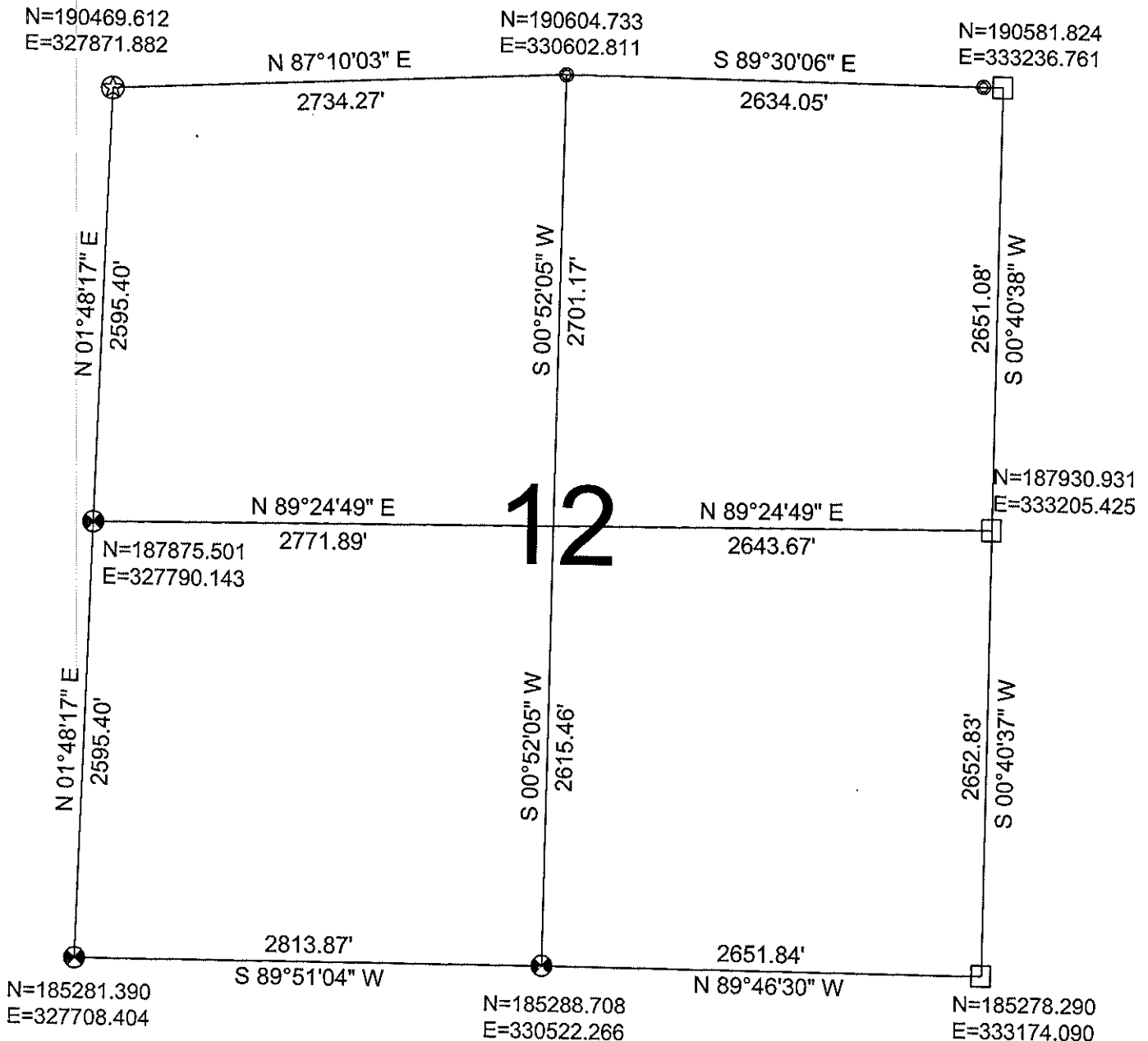
CERTIFIED CORRECT:

Ronald Jacobson
Ronald Jacobson RLS 2059-008
Registered Land Surveyor

DATE: October 24, 2008

COORDINATES ARE REFERENCED
TO LINCOLN COUNTY COORDINATE
SYSTEM AS DEVELOPED BY THE WI.
DEPARTMENT OF TRANSPORTATION
AND ARE BASED ON GPS OBSERVATIONS
TO CONTROL POINTS AS SUPPLIED BY
LINCOLN COUNTY.

NOT TO SCALE
BEARINGS REFERENCED
TO LINCOLN COUNTY
COORDINATE SYSTEM



LEGEND

- FOUND STONE MONUMENT
- FOUND 1.5" IRON PIPE
- SET LINCOLN COUNTY ALUMINUM SWAMP MONUMENT
- SET LINCOLN COUNTY BERNSTEN MOMUMENT

DRAFTED BY: Rutzen
DATE: October 24, 2008

CWE, Inc.
5707 Schofield Ave.
Weston, Wisconsin 54476
(715) 359-9400

Sec. 12