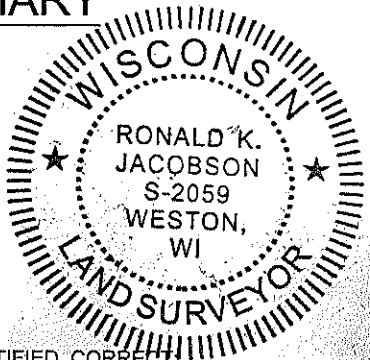


LINCOLN COUNTY U.S. PUBLIC LAND SECTION SUMMARY

SECTION 10
TOWNSHIP 33N
RANGE 4 E

CORNING
CITY, VILLAGE, TOWN

RECEIVED BY LINCOLN COUNTY
SURVEYOR THIS 7TH DAY
OF November 20 08
Tony Dahl
COUNTY SURVEYOR

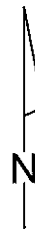


CERTIFIED CORRECT.

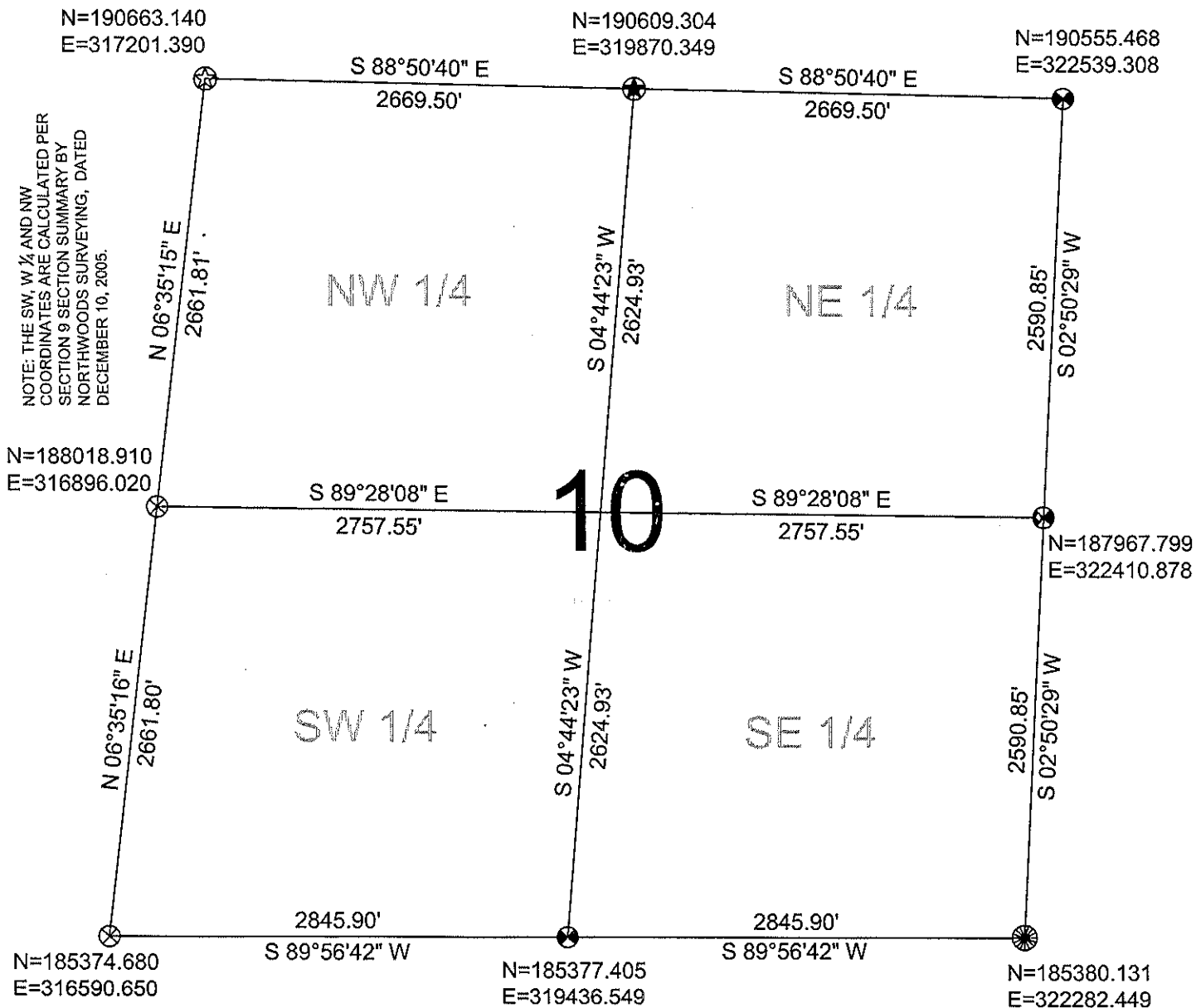
Ronald Jacobson RLS 2059-008
Registered Land Surveyor

DATE: November 7, 2008

COORDINATES ARE REFERENCED
TO LINCOLN COUNTY COORDINATE
SYSTEM AS DEVELOPED BY THE WI.
DEPARTMENT OF TRANSPORTATION
AND ARE BASED ON GPS OBSERVATIONS
TO CONTROL POINTS AS SUPPLIED BY
LINCOLN COUNTY.



NOT TO SCALE
BEARINGS REFERENCED
TO LINCOLN COUNTY
COORDINATE SYSTEM



LEGEND

- FOUND AXLE
- FOUND LINCOLN COUNTY BERNSTEN MONUMENT
- SET LINCOLN COUNTY ALUMINUM SWAMP MONUMENT
- FOUND LINCOLN COUNTY ALUMINUM SWAMP MONUMENT

DRAFTED BY: Rutzen
DATE: November 6, 2008

CWE, Inc.
5707 Schofield Ave.
Weston, Wisconsin 54476
(715) 359-9400

Sec 10