

# LINCOLN COUNTY U.S. PUBLIC LAND

## SECTION SUMMARY

SECTION 5  
 TOWNSHIP 33N  
 RANGE 4 E

CORNING  
 CITY, VILLAGE, TOWN

RECEIVED BY LINCOLN COUNTY  
 SURVEYOR THIS 5<sup>TH</sup> DAY  
 OF March 20 08  
Tom Dalk  
 COUNTY SURVEYOR

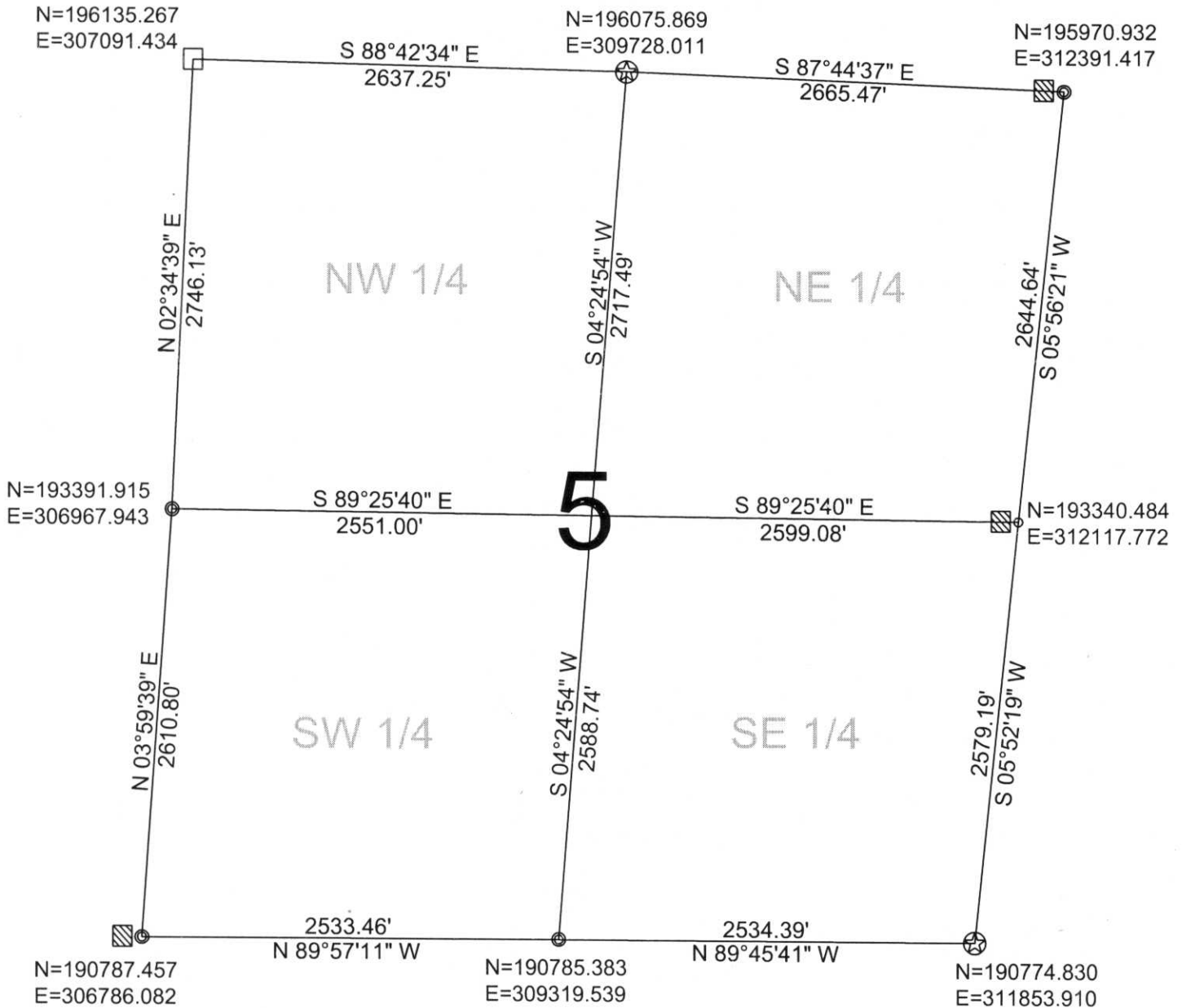


COORDINATES ARE REFERENCED  
 TO LINCOLN COUNTY COORDINATE  
 SYSTEM AS DEVELOPED BY THE WI.  
 DEPARTMENT OF TRANSPORTATION  
 AND ARE BASED ON GPS OBSERVATIONS  
 TO CONTROL POINTS AS SUPPLIED BY  
 LINCOLN COUNTY.

CERTIFIED CORRECT:

Ronald Jacobson  
 Ronald Jacobson RLS 2059-008  
 Registered Land Surveyor  
 DATE: March 5, 2008

NOT TO SCALE  
 BEARINGS REFERENCED  
 TO LINCOLN COUNTY  
 COORDINATE SYSTEM



### LEGEND

- FOUND STONE MONUMENT
- ⊙ FOUND 1.5" IRON PIPE
- FOUND 1" IRON PIPE
- ⊗ FOUND LINCOLN COUNTY ALUMINUM DRIVABLE MONUMENT
- ⊗ FOUND LINCOLN COUNTY BERNSTEN MOMUMENT
- ▨ FOUND WOOD POST

DRAFTED BY: Rutzen  
 DATE: February 27, 2008

Central Wisconsin Engineers & Architects  
 5707 Schofield Ave.  
 Weston, Wisconsin 54476  
 (715) 359-9400