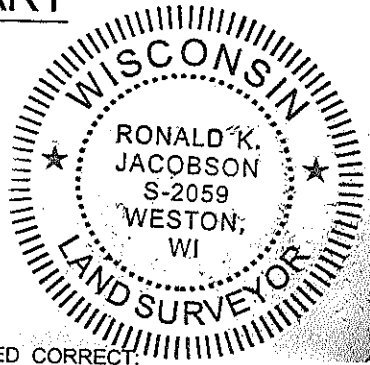


# LINCOLN COUNTY U.S. PUBLIC LAND SECTION SUMMARY

SECTION 4  
TOWNSHIP 33N  
RANGE 4 E

CORNING  
CITY, VILLAGE, TOWN

RECEIVED BY LINCOLN COUNTY  
SURVEYOR THIS 24<sup>TH</sup> DAY  
OF October 20 08  
Tom Dahl  
COUNTY SURVEYOR



CERTIFIED CORRECT:

Ronald Jacobson

Ronald Jacobson RLS 2059-008

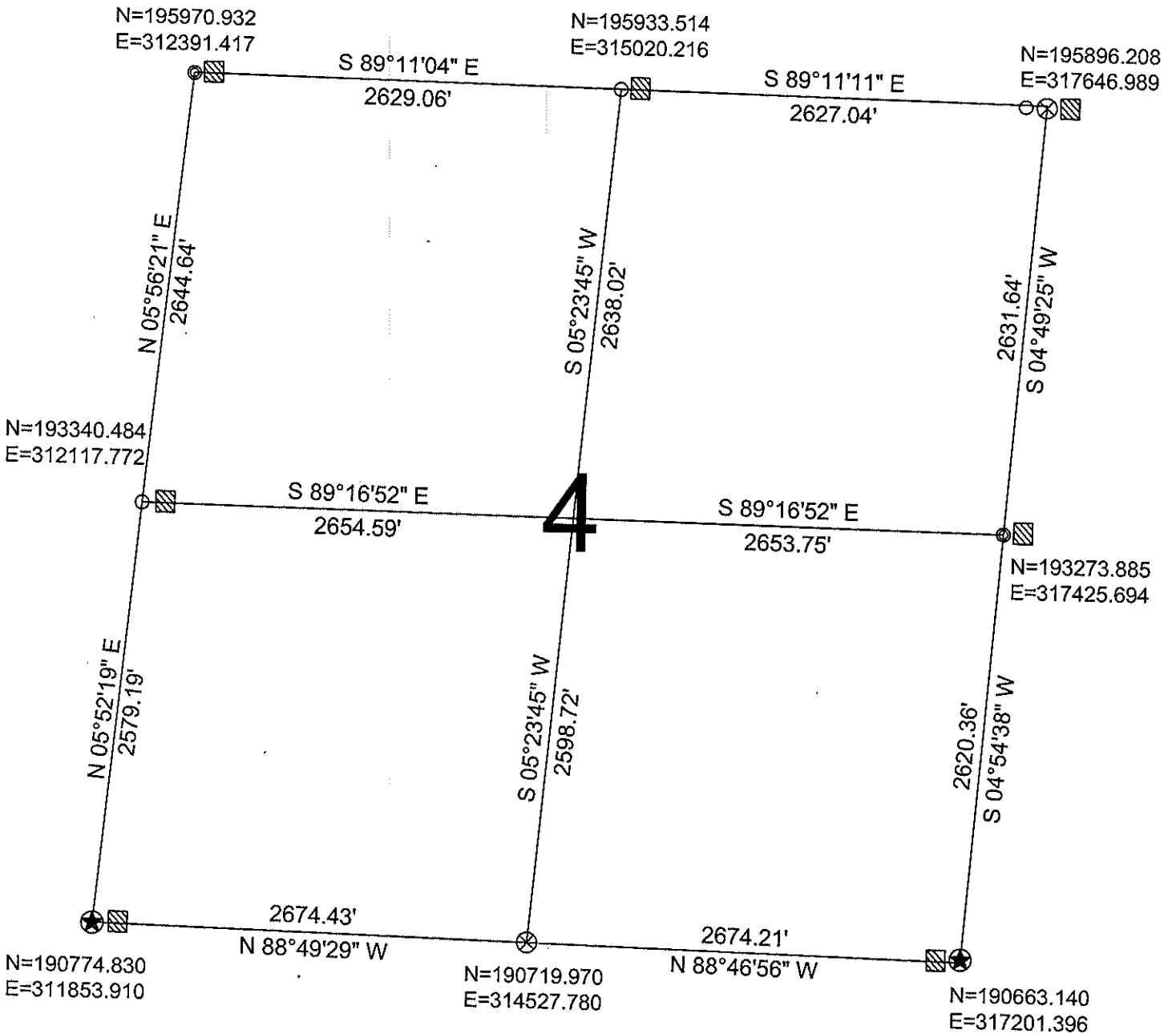
Registered Land Surveyor

DATE: October 24, 2008

COORDINATES ARE REFERENCED  
TO LINCOLN COUNTY COORDINATE  
SYSTEM AS DEVELOPED BY THE WI.  
DEPARTMENT OF TRANSPORTATION  
AND ARE BASED ON GPS OBSERVATIONS  
TO CONTROL POINTS AS SUPPLIED BY  
LINCOLN COUNTY.



NOT TO SCALE  
BEARINGS REFERENCED  
TO LINCOLN COUNTY  
COORDINATE SYSTEM



### LEGEND

- FOUND 1.0" IRON PIPE
- FOUND 1.5" IRON PIPE
- ▨ FOUND WOOD POST
- ⊗ FOUND LINCOLN COUNTY BERNSTEN MOMUMENT
- ⊙ SET LINCOLN COUNTY ALUMINUM SWAMP MONUMENT
- ⊛ FND. LINCOLN COUNTY ALUMINUM SWAMP MONUMENT

DRAFTED BY: Rutzen  
DATE: October 24, 2008

CWE, Inc.  
5707 Schofield Ave.  
Weston, Wisconsin 54476  
(715) 359-9400

Sec. 4