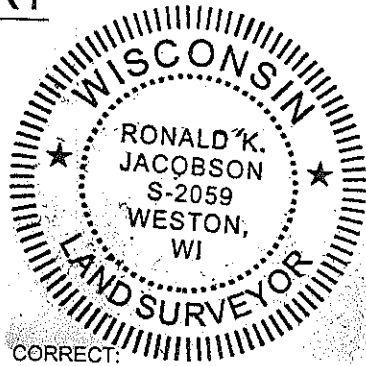


LINCOLN COUNTY U.S. PUBLIC LAND SECTION SUMMARY

SECTION 3
TOWNSHIP 33N
RANGE 4 E

CORNING
CITY, VILLAGE, TOWN

RECEIVED BY LINCOLN COUNTY
SURVEYOR THIS 24TH DAY
OF October 20 08
Tom Dahr
COUNTY SURVEYOR



CERTIFIED CORRECT:

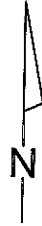
Ronald Jacobson

Ronald Jacobson RLS 2059-008

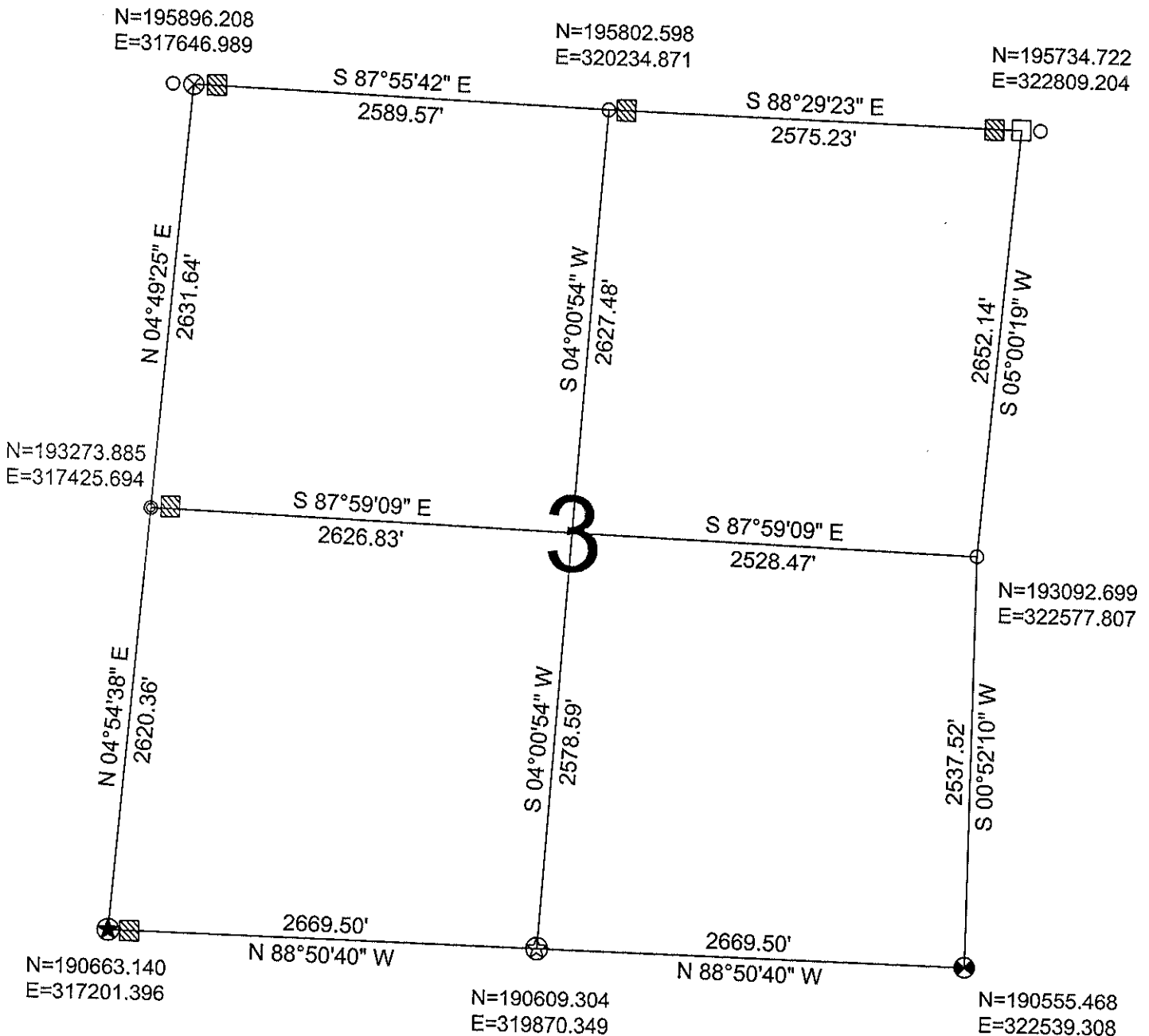
Registered Land Surveyor

DATE: October 24, 2008

COORDINATES ARE REFERENCED
TO LINCOLN COUNTY COORDINATE
SYSTEM AS DEVELOPED BY THE WI.
DEPARTMENT OF TRANSPORTATION
AND ARE BASED ON GPS OBSERVATIONS
TO CONTROL POINTS AS SUPPLIED BY
LINCOLN COUNTY.



NOT TO SCALE
BEARINGS REFERENCED
TO LINCOLN COUNTY
COORDINATE SYSTEM



LEGEND

- | | |
|--|---|
| □ FOUND STONE MONUMENT | ○ FOUND 1.0" IRON PIPE |
| ● FOUND 1.5" IRON PIPE | ⊙ SET LINCOLN COUNTY ALUMINUM SWAMP MONUMENT |
| ▨ FOUND WOOD POST | ⊛ FND. LINCOLN COUNTY ALUMINUM SWAMP MONUMENT |
| ⊙ SET LINCOLN COUNTY BERNSTEN MOMUMENT | |
| ⊗ FOUND LINCOLN COUNTY BERNSTEN MOMUMENT | |

DRAFTED BY: Rutzen
DATE: October 24, 2008

CWE, Inc.
5707 Schofield Ave.
Weston, Wisconsin 54476
(715) 359-9400

Sec. 3