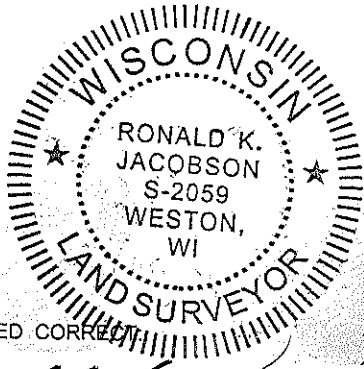


LINCOLN COUNTY U.S. PUBLIC LAND SECTION SUMMARY

SECTION 1
TOWNSHIP 33N
RANGE 4 E

CORNING
CITY, VILLAGE, TOWN

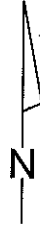


CERTIFIED CORRECT

Ronald Jacobson RLS 2059-008

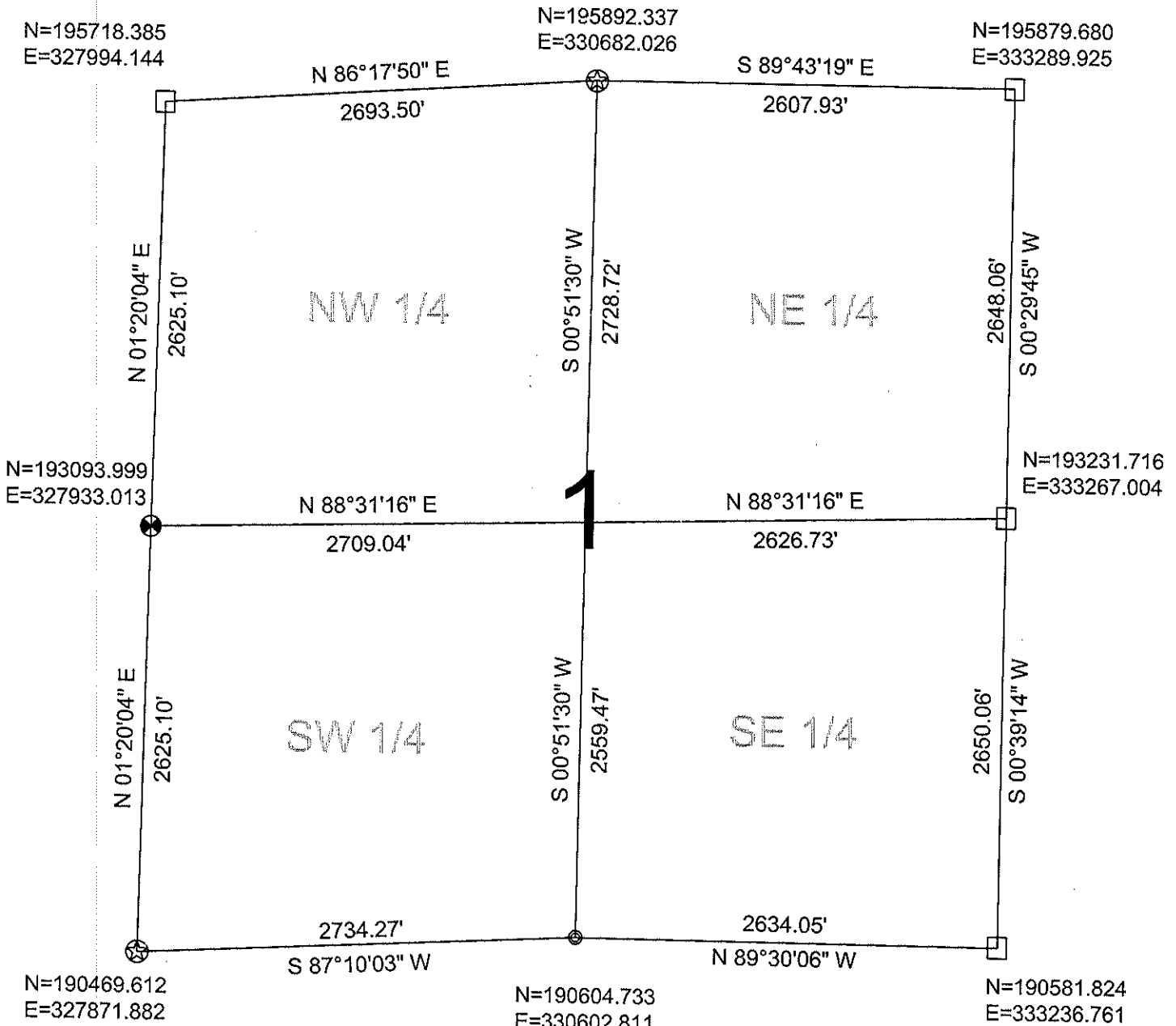
Registered Land Surveyor

DATE: September 26, 2008



NOT TO SCALE
BEARINGS REFERENCED
TO LINCOLN COUNTY
COORDINATE SYSTEM

COORDINATES ARE REFERENCED
TO LINCOLN COUNTY COORDINATE
SYSTEM AS DEVELOPED BY THE WI.
DEPARTMENT OF TRANSPORTATION
AND ARE BASED ON GPS OBSERVATIONS
TO CONTROL POINTS AS SUPPLIED BY
LINCOLN COUNTY.



RECEIVED BY LINCOLN COUNTY

LEGEND

- FOUND STONE MONUMENT
- FOUND 1.5" IRON PIPE
- ☆ SET LINCOLN COUNTY ALUMINUM SWAMP MONUMENT
- ⊙ FOUND LINCOLN COUNTY BERNSTEN MONUMENT

SURVEYOR THIS 29TH DAY
OF September 20 08
Ronald Jacobson
COUNTY SURVEYOR

DRAFTED BY: Rutzen
DATE: September 12, 2008

CWE, Inc.
5707 Schofield Ave.
Weston, Wisconsin 54476
(715) 359-9400

Sec. 1