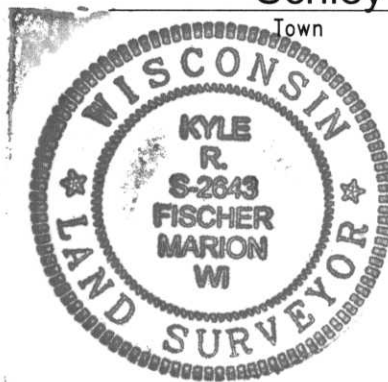




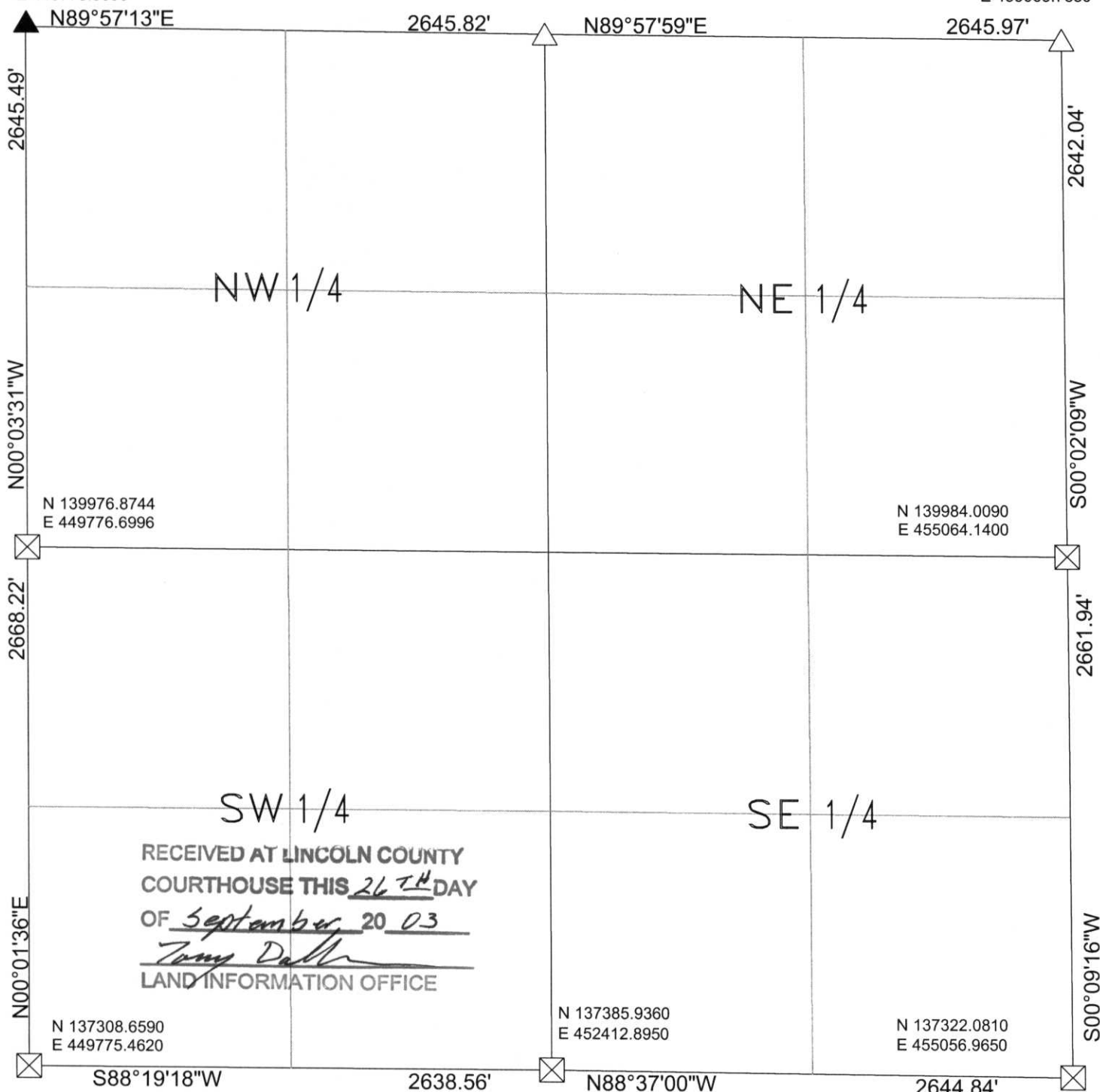
SECTION SUMMARY
26 - T32N - R8E
Section Township Range
Schley
Town



N 142622.3650
E 449773.9990

N 142624.5020
E 452419.8150

N 142626.0530
E 455065.7880



RECEIVED AT LINCOLN COUNTY
COURTHOUSE THIS 26TH DAY
OF September 20 03
Tony Dahl
LAND INFORMATION OFFICE

NOTES:
1-COORDINATES & BEARINGS BASED ON LINCOLN COUNTY COORDINATE SYSTEM.

LEGEND

- ☒ -6"X6" Stone Found
- △ -Found PK Nail
- ▲ -Set Mag Nail From Recorded Ties

CERTIFIED CORRECT:
Kyle R. Fischer

Kyle R. Fischer
Registered Land Surveyor
DATE: Sept 17, 2003

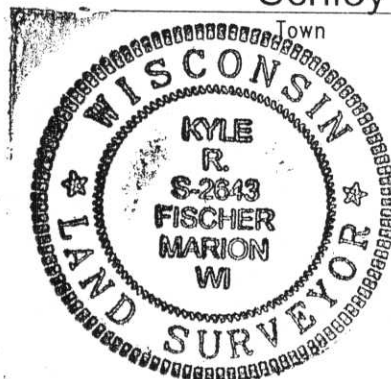


North



SECTION SUMMARY

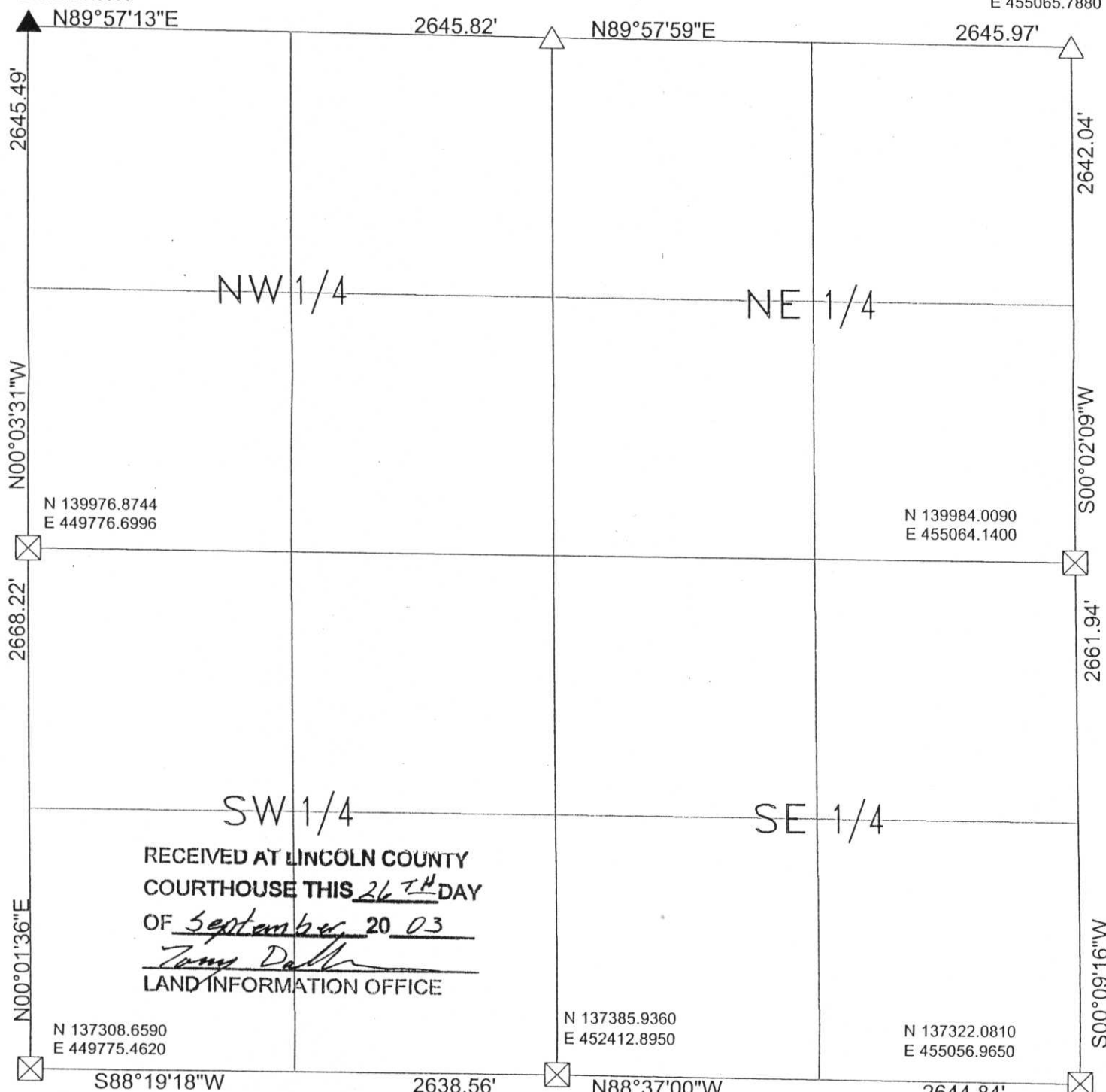
26 - T32N - R8E
Section Township Range
Schley



N 142622.3650
E 449773.9990

N 142624.5020
E 452419.8150

N 142626.0530
E 455065.7880



N 139976.8744
E 449776.6996

N 139984.0090
E 455064.1400

N 137308.6590
E 449775.4620

N 137385.9360
E 452412.8950

N 137322.0810
E 455056.9650

RECEIVED AT LINCOLN COUNTY
COURTHOUSE THIS 26TH DAY
OF September 20 03
Tom Dalk
LAND INFORMATION OFFICE

SET BERNTSEN
ABOVE STONE

SET 1 1/4"X18" BAR
ABOVE STONE

NOTES:
1-COORDINATES & BEARINGS BASED ON LINCOLN COUNTY COORDINATE SYSTEM.

LEGEND

- ☒ -6"X6" Stone Found
- △ -Found PK Nail
- ▲ -Set Mag Nail From Recorded Ties

CERTIFIED CORRECT:

Kyle R. Fischer

Kyle R. Fischer
Registered Land Surveyor

DATE: Sept 11, 2003