



North

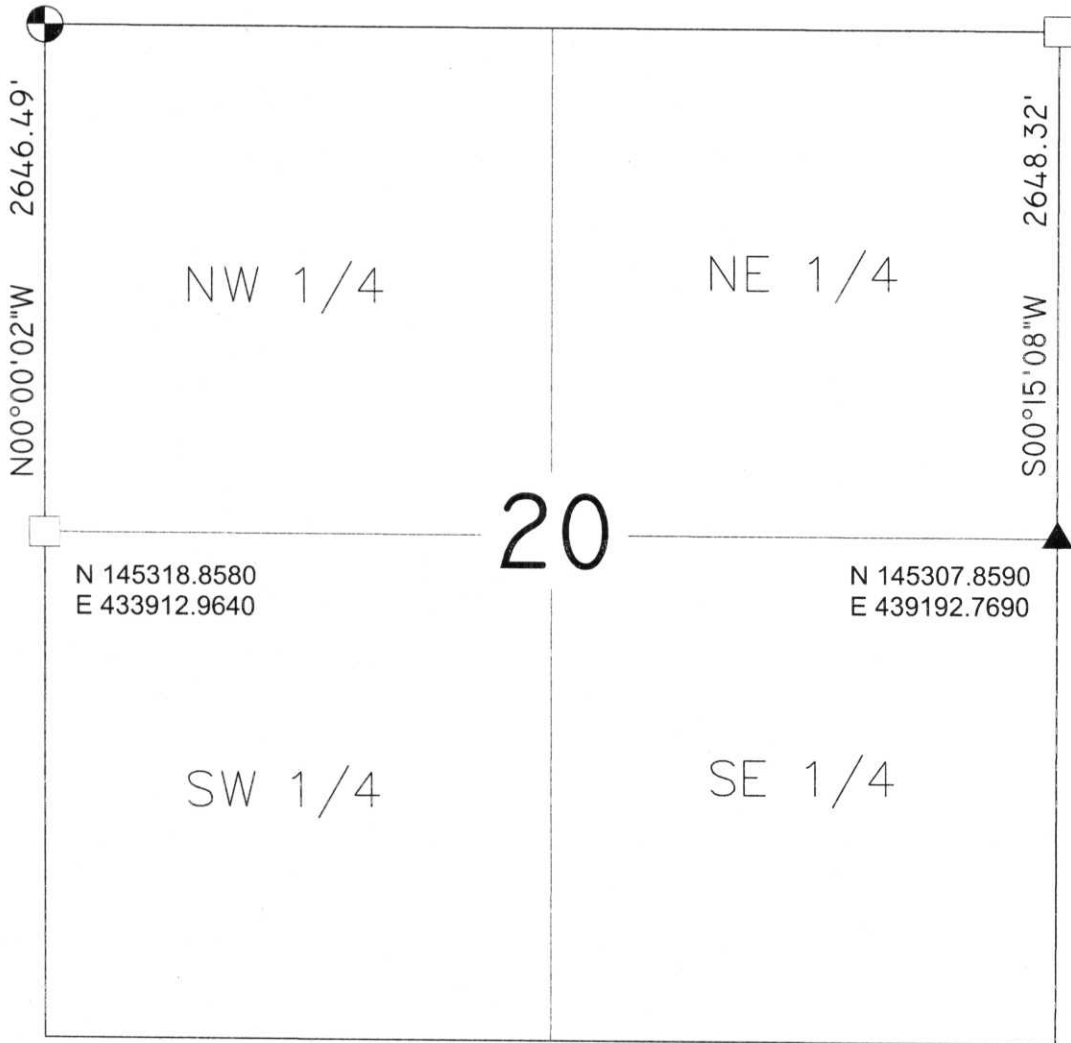


SECTION SUMMARY

20 - T32N - R8E
 Section Township Range
 SCHLEY
 Town

N 147965.3470
 E 433912.9340

N 147956.1550
 E 439204.4230



NOTES:
 1-COORDINATES & BEARINGS BASED ON LINCOLN COUNTY COORDINATE SYSTEM.

LEGEND

- ⊕ -BERNSTEN MONUMENT
- -GRANITE STONE
- -1 1/2" IRON PIPE
- -2" IRON PIPE
- △ -PK NAIL
- ▲ -RR SPIKE
- -LOCATION FROM TIES
- ⊙ -3/4" REBAR



RECEIVED BY LINCOLN COUNTY
 SURVEYOR THIS 16TH DAY
 OF September, 2004
Tony Dull
 COUNTY SURVEYOR

CERTIFIED CORRECT:

DAVID A. RENAUD

David Renaud
 Registered Land Surveyor

DATE:

9-15-04

M.D.: 5, 9

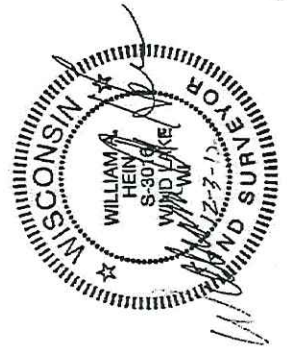
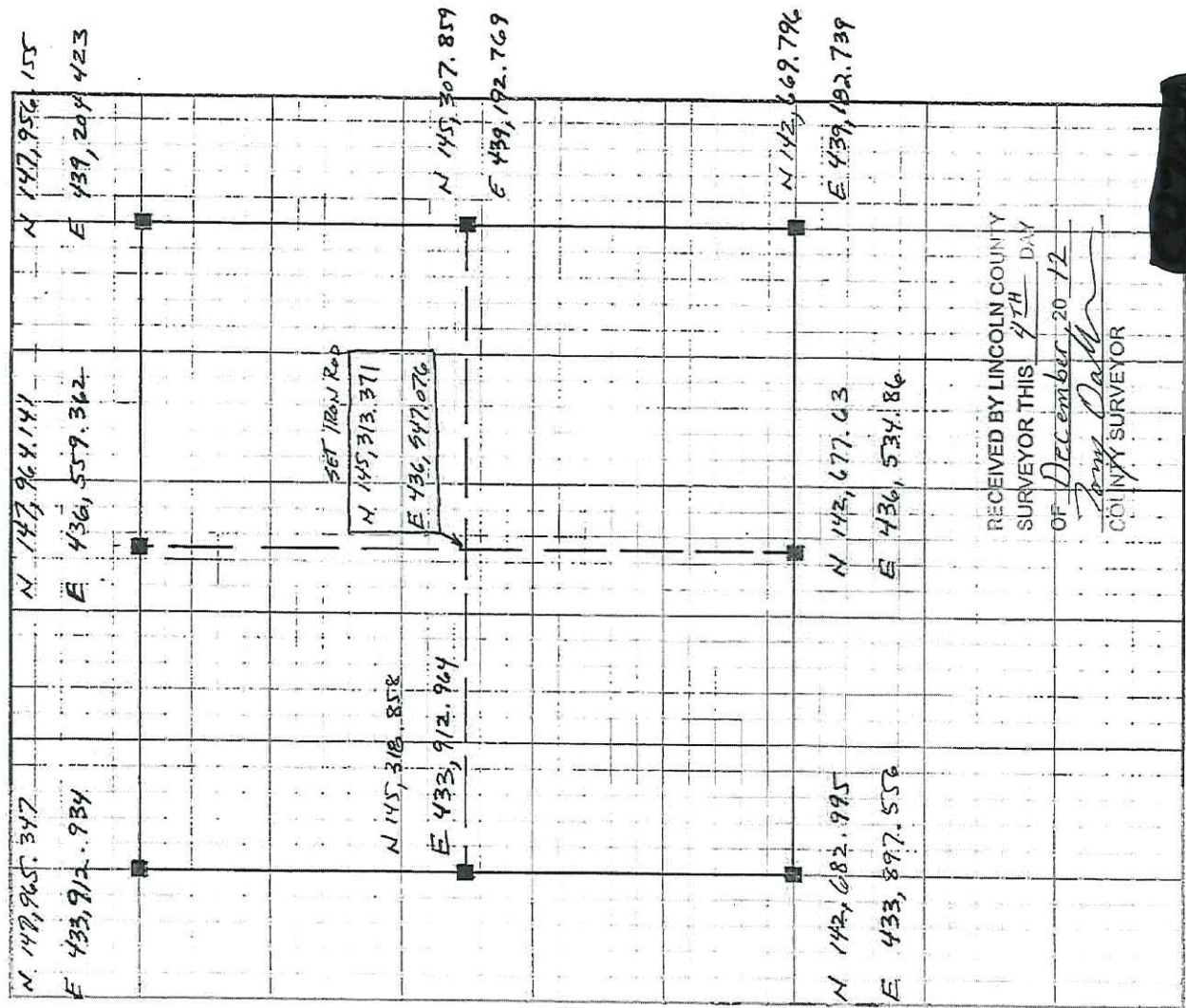
CRISPELL-SNYDER, INC.  **CONSULTING ENGINEERS**

CLIENT BRYAN GREISCH DATE 11-24-12
 PROJECT SECTION 20-T32N-R08E BY MICH R.
 PROJECT NO. LINCOLN COUNTY PAGE NO. 1 OF 1

Description	North	East
North West Corner	147,965.347	433,912.934
North Quarter Corner	147,964.141	436,559.362
North East Corner	147,956.155	439,204.423
West Quarter Corner	145,318.858	433,912.964
Center	145,313.371	436,547.076
East Quarter Corner	145,307.859	439,192.769
South West Corner	142,682.995	433,897.556
South Quarter Corner	142,677.63	436,534.86
South East Corner	142,669.796	439,182.739

Quarter Section Coordinates-Greisch Survey
 Part of the SW 1/4 of the NE 1/4 of
 Section 20-32-08
 Town of Schley
 Lincoln County, WI

LEGEND
 Black text indicates provided coordinates
 Red text indicates calculated coordinates



RECEIVED BY LINCOLN COUNTY
 SURVEYOR THIS 4TH DAY
 OF December 20 12
Tom Dahn
 COUNTY SURVEYOR



Sec 20