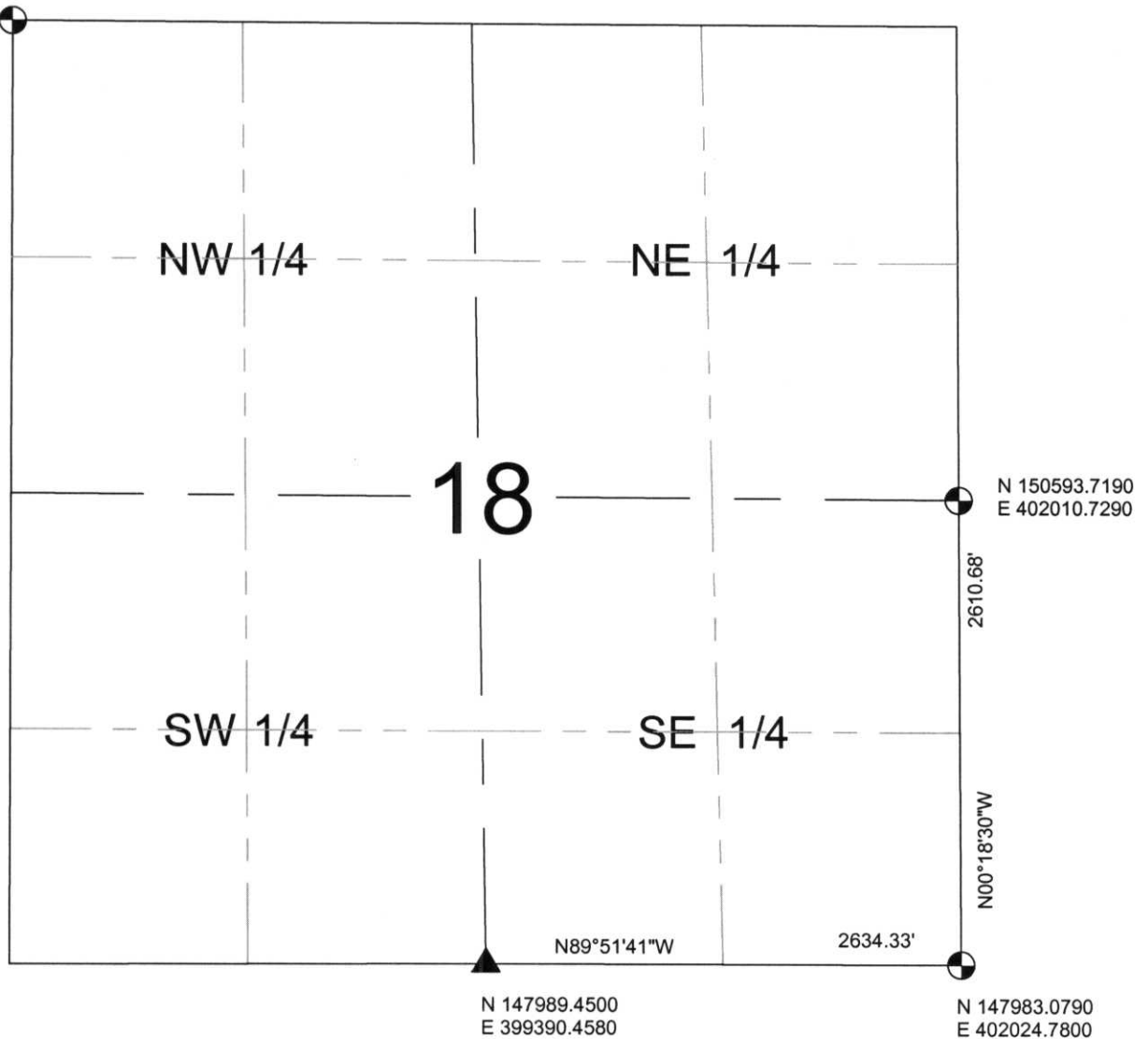




SECTION
SUMMARY

18 - 32 - 7E
Section Township Range
MERRILL
Town

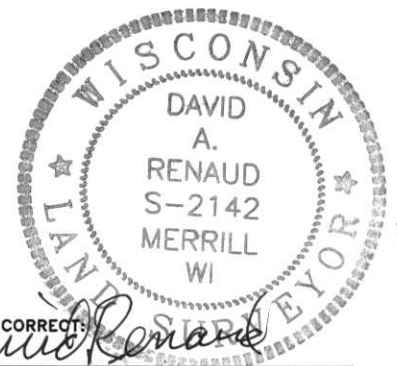
N 153274.8660
E 396765.5650



NOTES:
COORDINATES AND BEARINGS ARE REFERENCED TO THE LINCOLN COUNTY COORDINATE SYSTEM AS DEVELOPED BY THE WISCONSIN DEPARTMENT OF TRANSPORTATION AND WERE DETERMINED BY GPS OBSERVATIONS ON CONTROL POINTS AS SUPPLIED BY THE DOT.

- LEGEND**
- ⊕ - Lincoln County Monument
 - - Stone or Concrete Monument
 - - 1" Iron Pipe
 - - Iron Bar
 - ▲ - Survey Marker Pin

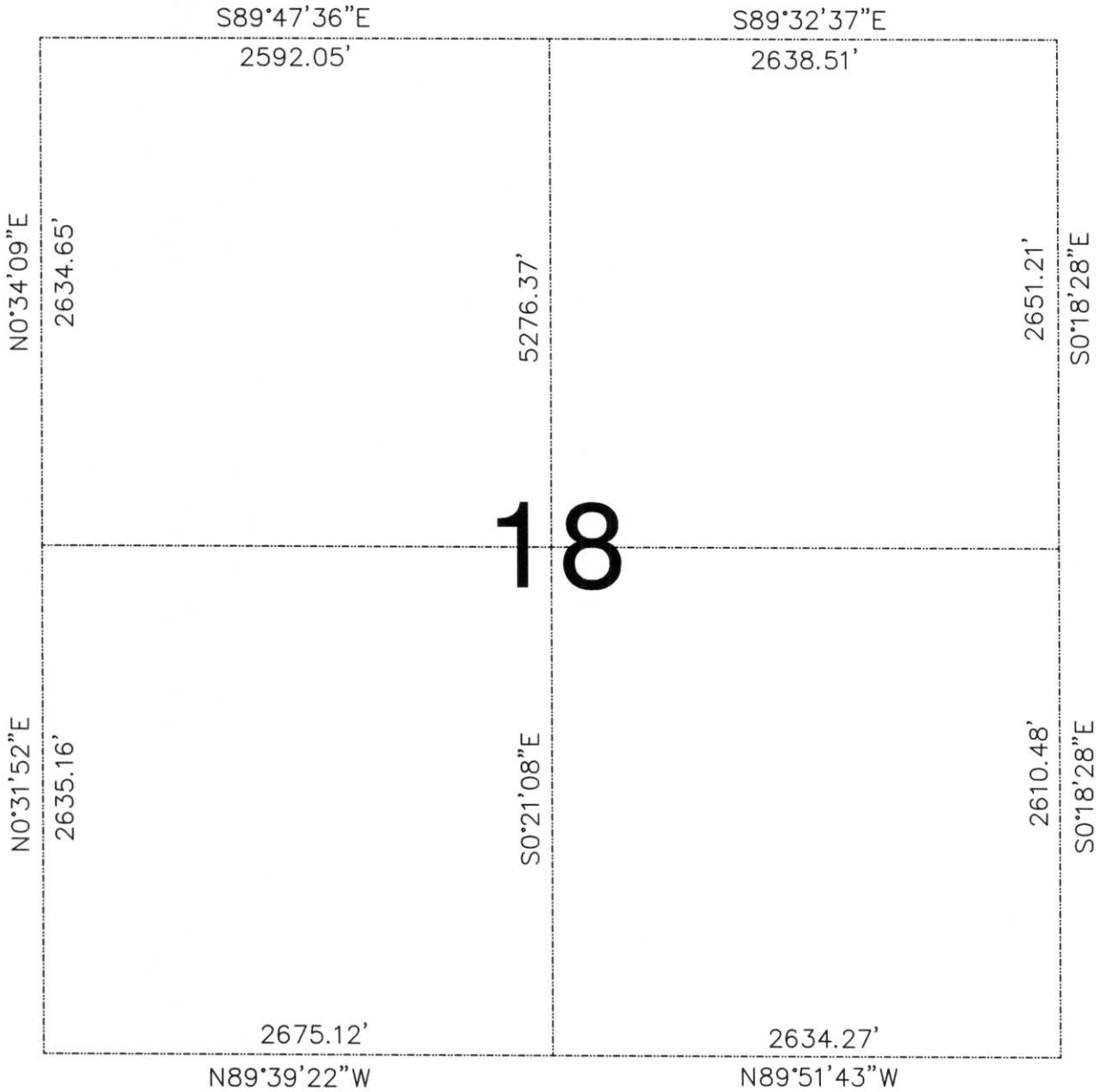
RECEIVED AT LINCOLN COUNTY
COURTHOUSE THIS 3RD DAY
OF December 20 02
Tony Dull
LAND INFORMATION OFFICE



CERTIFIED CORRECT:
David Renaud
DATE: 11-29-02 Registered Land Surveyor

I.M. 1-5

SECTION BREAK DOWN
SECTION 18-32-7



OPEN ENDED TRAVERSE TO STACKED PRISMS, DISTANCES SHOT BOTH WAYS.
1 SECOND THEODOLITE.

RECEIVED AT LINCOLN COUNTY
COURTHOUSE THIS 7TH DAY
OF August 20 02
Tommy Dalk
LAND INFORMATION OFFICE

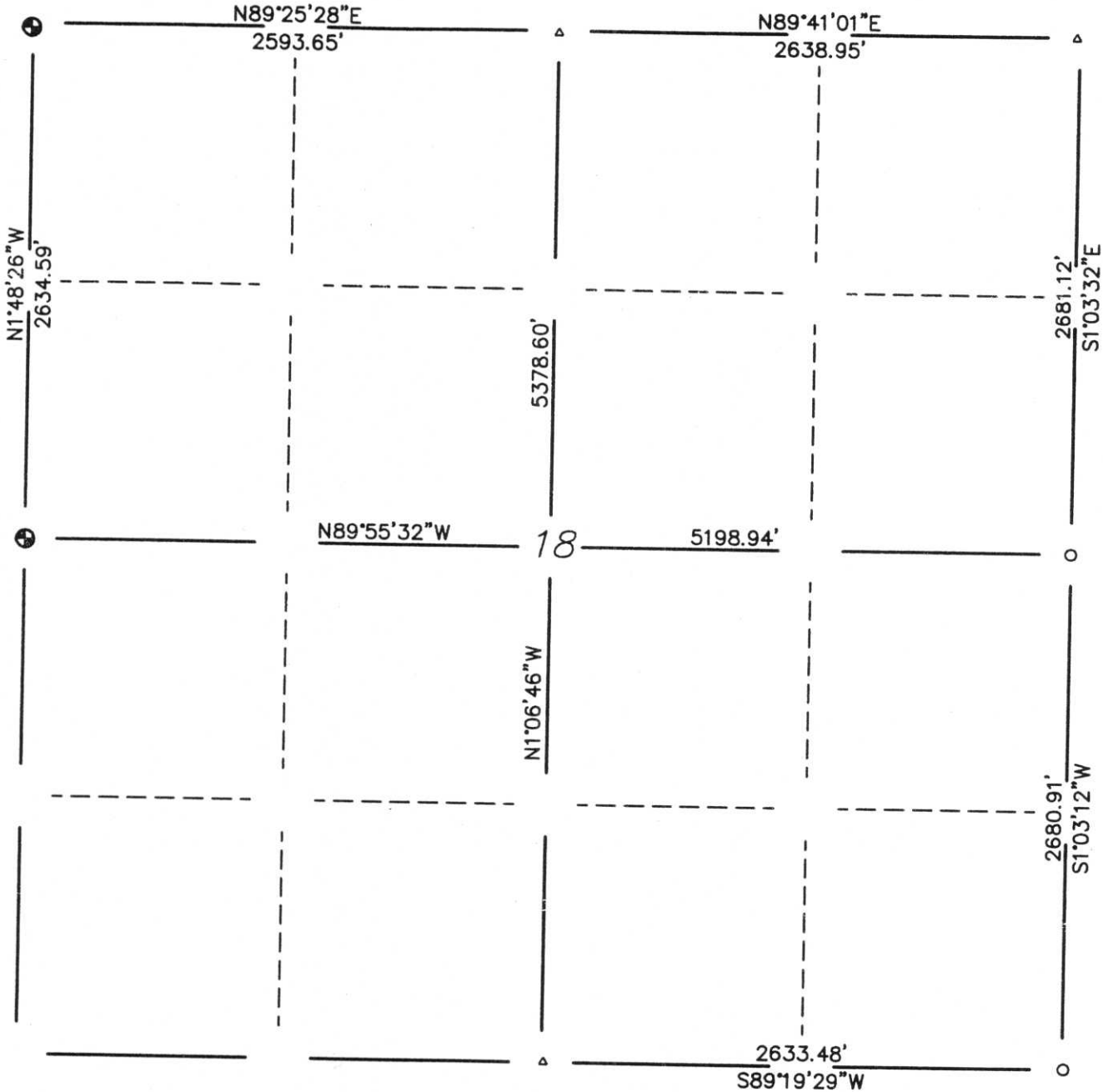


I-M:1-5

Lincoln County Surveyor

SECTION
SUMMARY

18	32	7
Section	Township	Range
MERRILL		
Town		



LEGEND

- ⊕ - Berntsen Monument
- - Stone or Concrete Monument
- - 2" Iron Pipe
- - 1" Iron Pipe
- - Iron Bar
- ⊙ - SN-1 Nail
- △ - PK Nail

RECEIVED AT LINCOLN COUNTY
COURTHOUSE THIS 21ST DAY
OF October 20 02
Zony Daffer
LAND INFORMATION OFFICE

CERTIFIED CORRECT:
William W. Nutter, R.L.S.

Registered Land Surveyor

DATE: 1-15-02

I-M-1-5