

# LINCOLN COUNTY

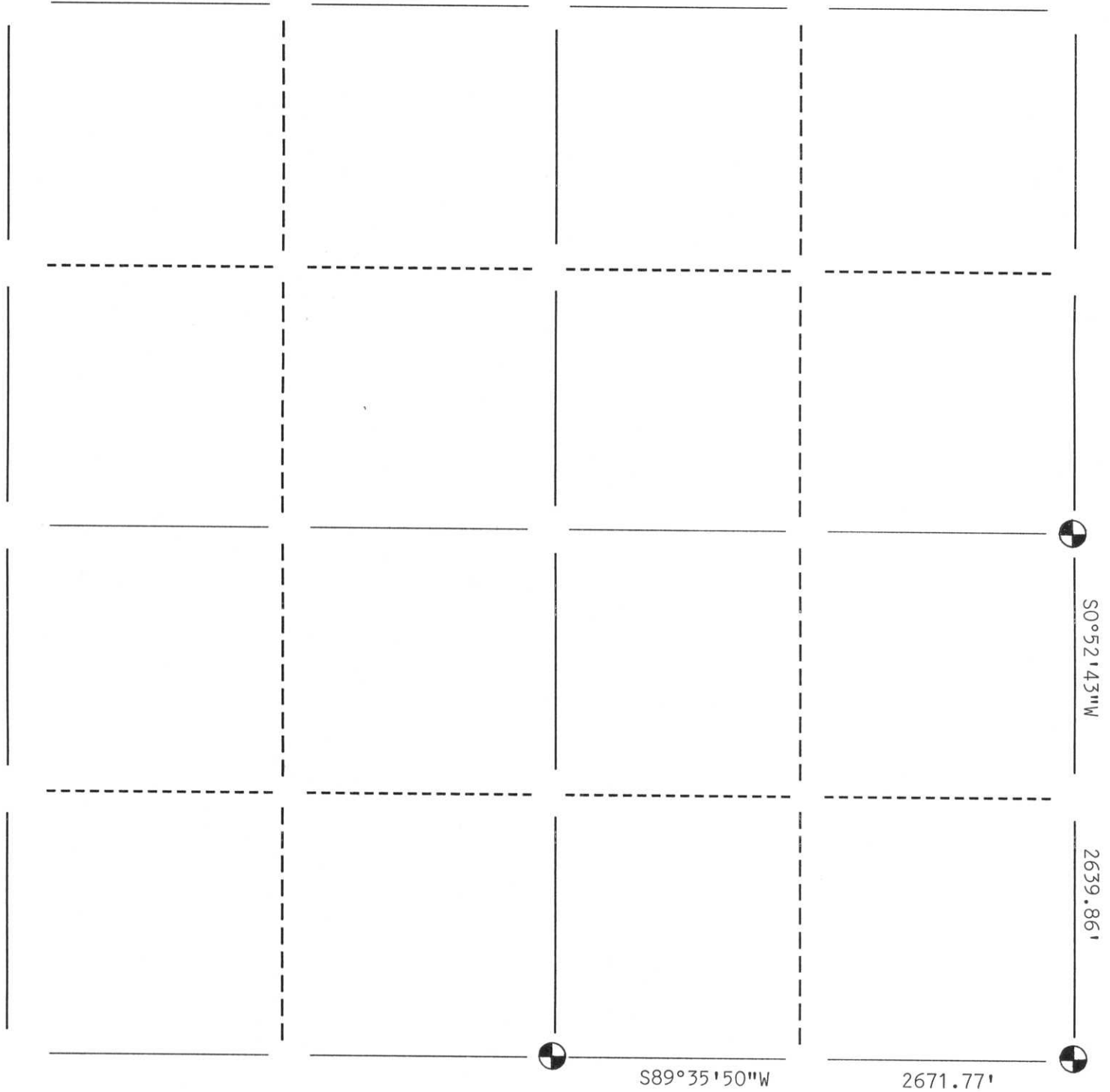


22 - 32 - 6  
Section Town Range

MERRILL  
Township

## SECTION SUMMARY

N



### LEGEND

- Berntsen Monument
- 2" Iron Pipe
- Stone or Concrete Monument
- 1" Iron Pipe
- Iron Pipe
- Other



RECEIVED AT LINCOLN COUNTY  
COURTHOUSE THIS 8TH DAY  
OF November 20 01  
Tony Dalton  
LAND INFORMATION OFFICE

CERTIFIED CORRECT:  
David J. Goslin  
Registered Land Surveyor

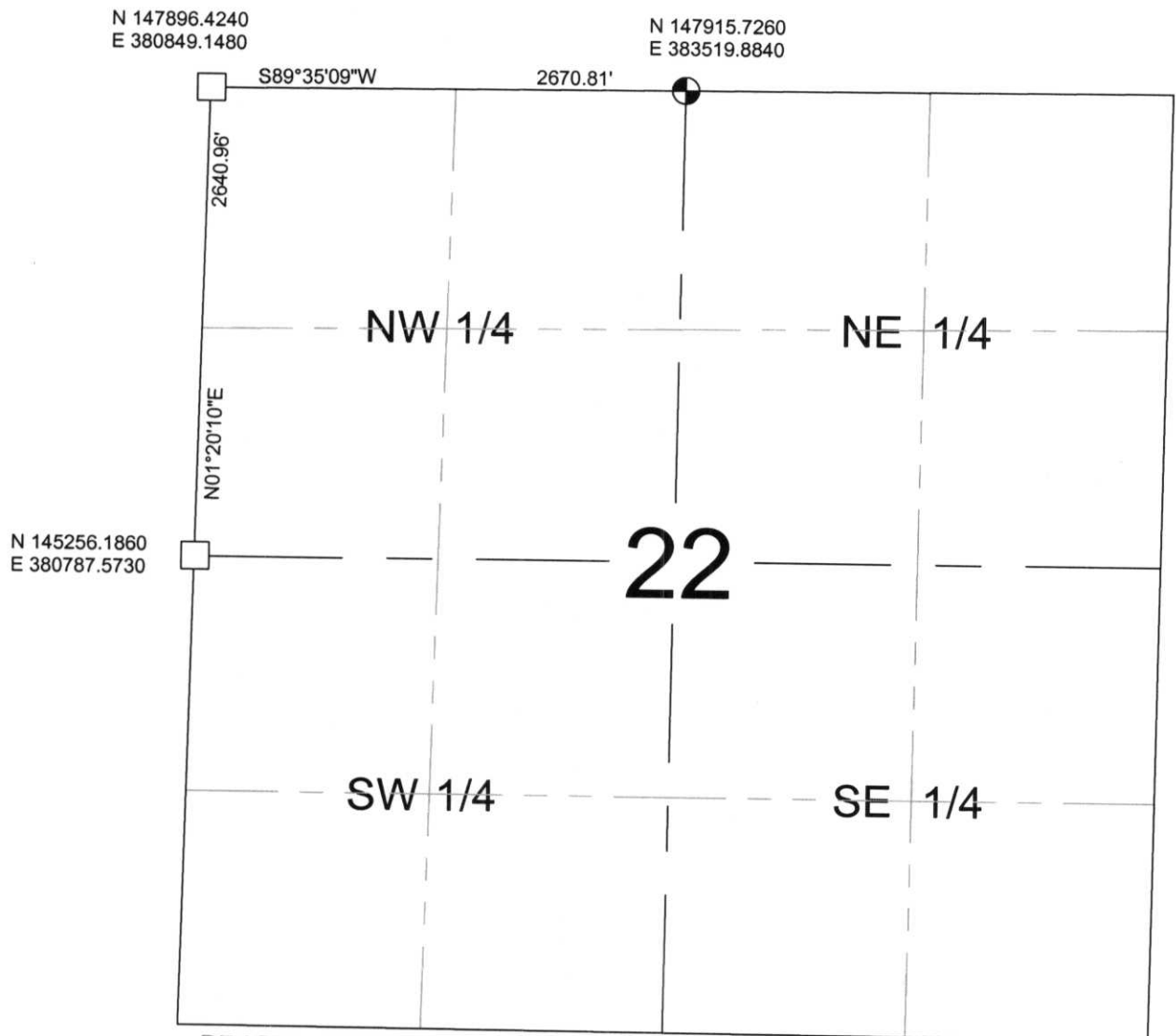
DATE: 10-26-01

17:0 - 13:11

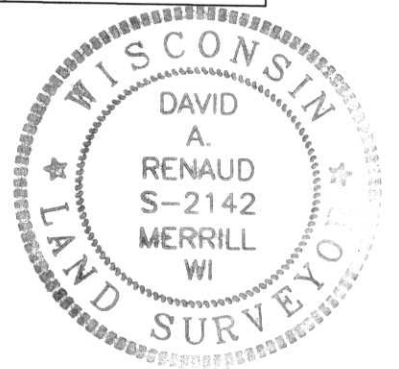


SECTION  
SUMMARY

22 - 32 - 6E  
Section Township Range  
**MERRILL**  
Town



RECEIVED AT LINCOLN COUNTY  
COURTHOUSE THIS 5<sup>TH</sup> DAY  
OF December 20 02  
*Tommy Dutton*  
LAND INFORMATION OFFICE



NOTES:  
COORDINATES AND BEARINGS ARE REFERENCED TO THE LINCOLN COUNTY COORDINATE SYSTEM AS DEVELOPED BY THE WISCONSIN DEPARTMENT OF TRANSPORTATION AND WERE DETERMINED BY GPS OBSERVATIONS ON CONTROL POINTS AS SUPPLIED BY THE DOT.

**LEGEND**

- ⊕ - Lincoln County Monument
- - Stone or Concrete Monument
- - 1" Iron Pipe
- - Iron Bar
- △ - P.K. Nail

CERTIFIED CORRECT:

*David A. Renaud*

DATE: 12-04-02 Registered Land Surveyor

17, 12 - 13, 17