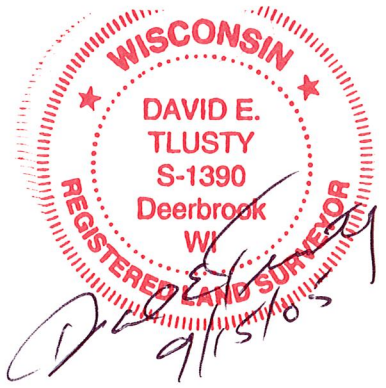


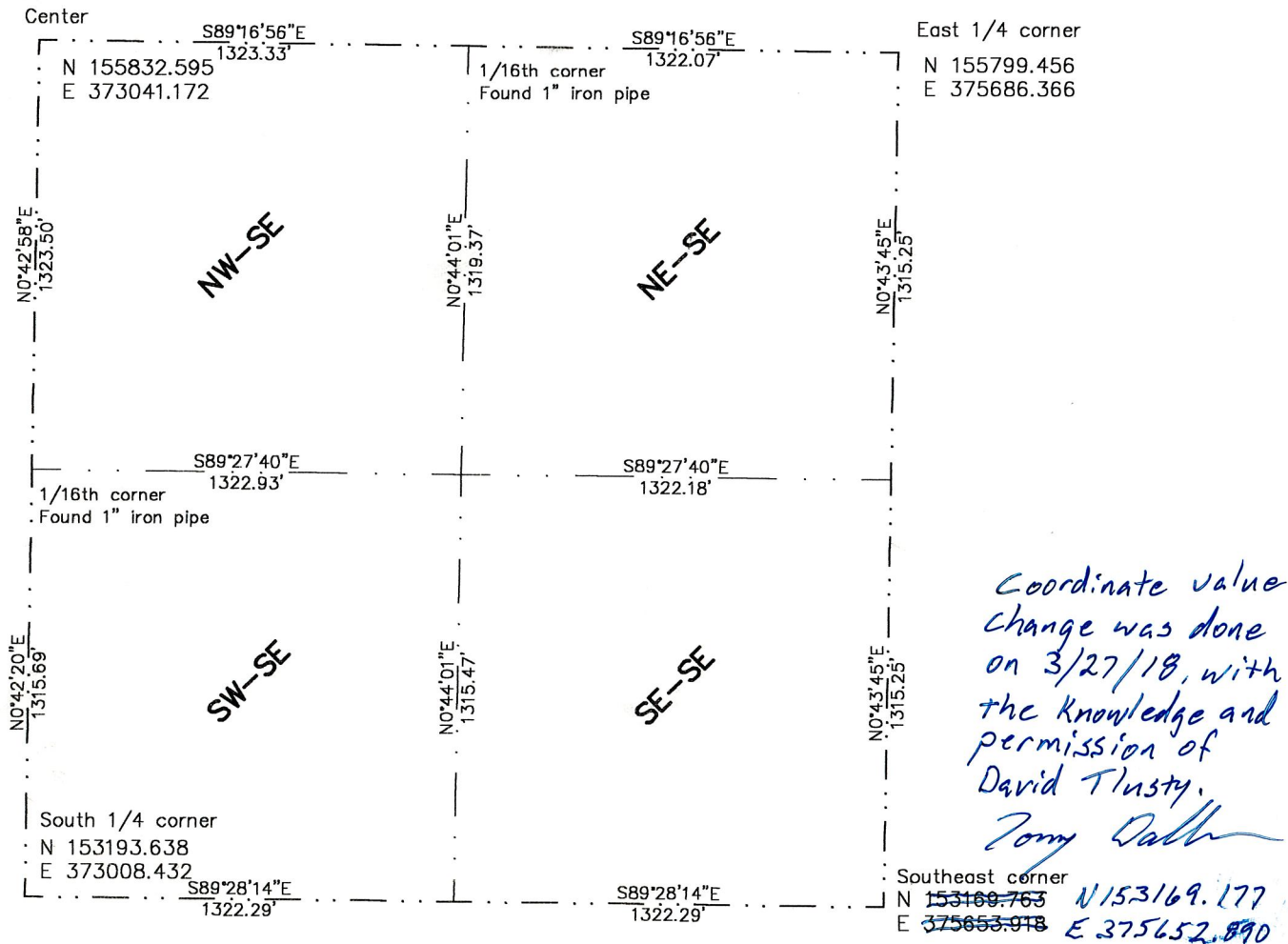
SE 1/4, Section 8,
T. 32 N., R. 6 E.,
Lincoln County, WI



David E. Tlusty,
S-1390
September 15, 2005

Center of Section - Found 6" x 6" granite stone
East 1/4 corner - Set Berntsen aluminum monument in road
Southeast corner - Set Berntsen rod monument
South 1/4 corner - set nail from ties by Lester Schmidt.

Coordinates shown are Lincoln County Coordinate system values.



RECEIVED BY LINCOLN COUNTY
SURVEYOR THIS 19TH DAY
OF September 20 05
Tony Dahl
COUNTY SURVEYOR

4, I: 79

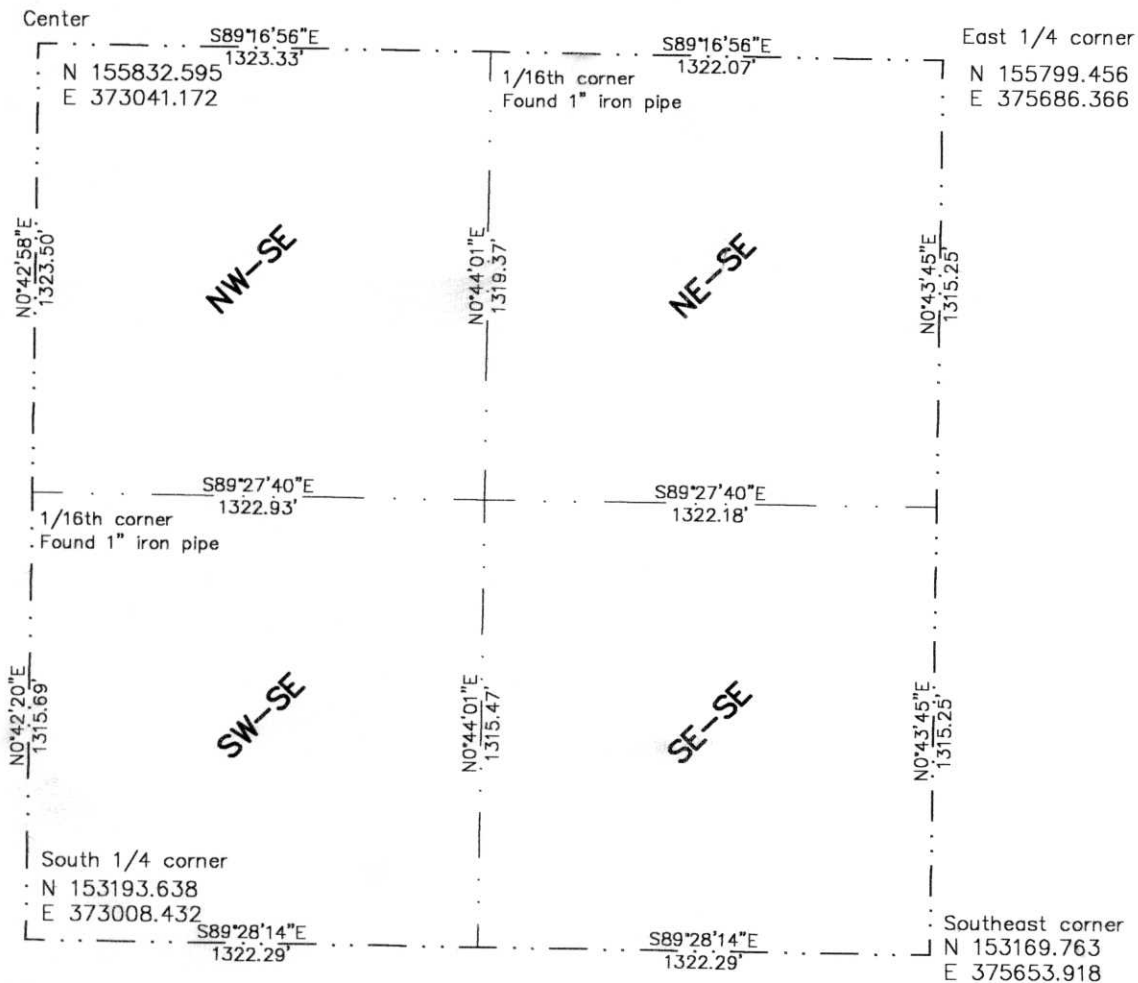
SE 1/4, Section 8,
T. 32 N., R. 6 E.,
Lincoln County, WI



Center of Section – Found 6" x 6" granite stone
 East 1/4 corner – Set Berntsen aluminum monument in road
 Southeast corner – Set Berntsen rod monument
 South 1/4 corner – set nail from ties by Lester Schmidt.

David E. Tlusty,
 S-1390
 September 15, 2005

Coordinates shown are Lincoln County Coordinate system values.



RECEIVED BY LINCOLN COUNTY
 SURVEYOR THIS 19TH DAY
 OF September 20 05
Tony Oak
 COUNTY SURVEYOR

62:79