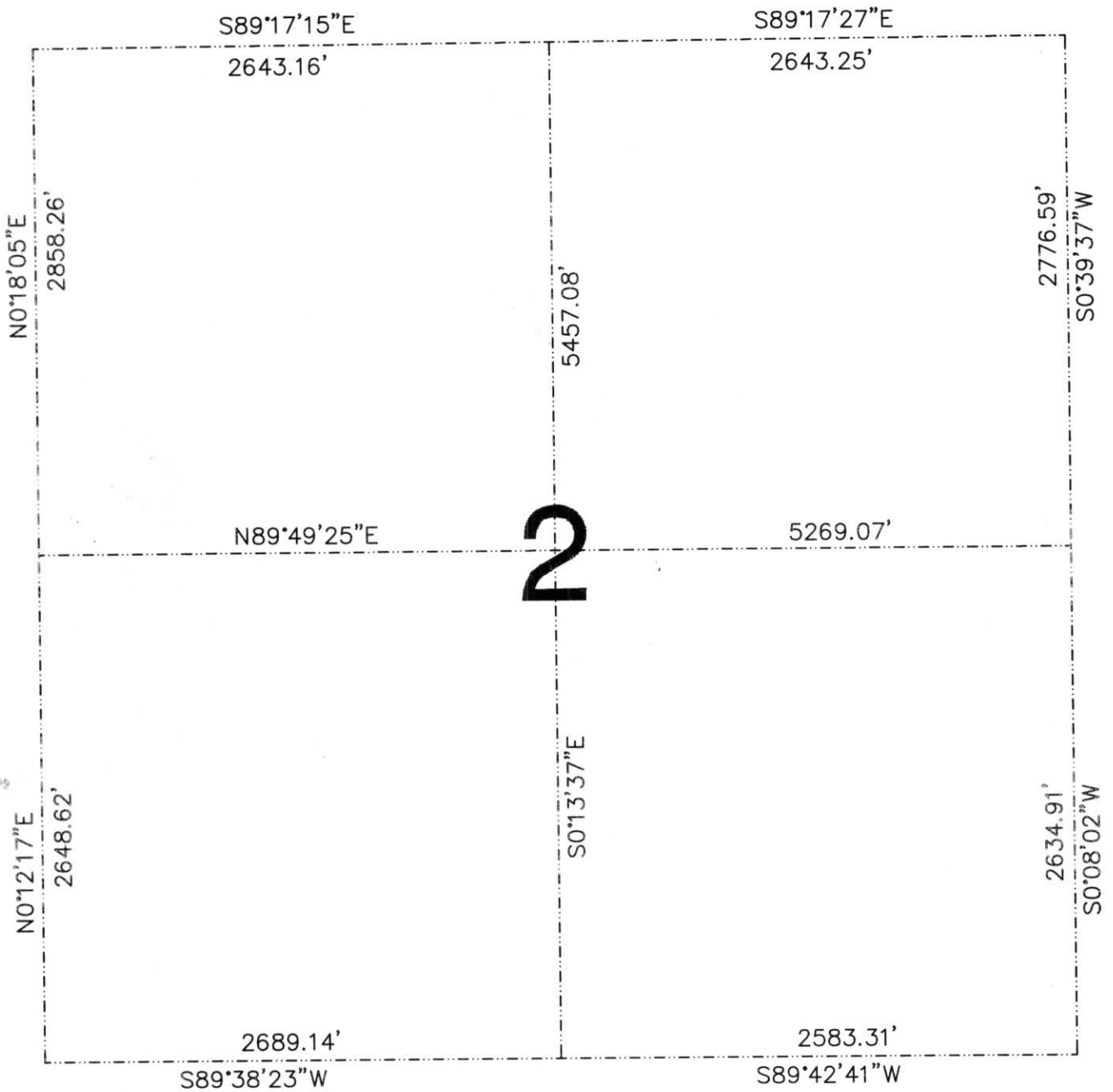


# SECTION SUMMARY

## SECTION 2-32-6, TOWN OF MERRILL



OPEN ENDED TRAVERSE, 1" THEODOLITE, STACKED TARGETS

RECEIVED AT LINCOLN COUNTY  
 COURTHOUSE THIS 1st DAY  
 OF June 2000  
Jerry Dallman  
 LAND INFORMATION OFFICE



A:E-17:21