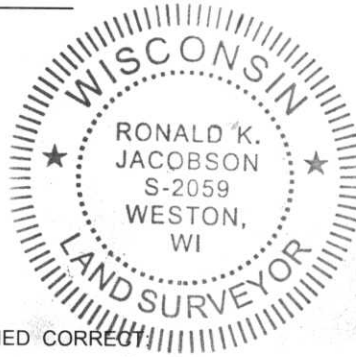


LINCOLN COUNTY U.S. PUBLIC LAND SECTION SUMMARY

SECTION 14
TOWNSHIP 32N
RANGE 4 E

CORNING
CITY, VILLAGE, TOWN

RECEIVED BY LINCOLN COUNTY
SURVEYOR THIS 2ND DAY
OF November 20 07
Tom Dalko
COUNTY SURVEYOR



CERTIFIED CORRECT

Ronald K. Jacobson
Ronald Jacobson RLS 2059-008

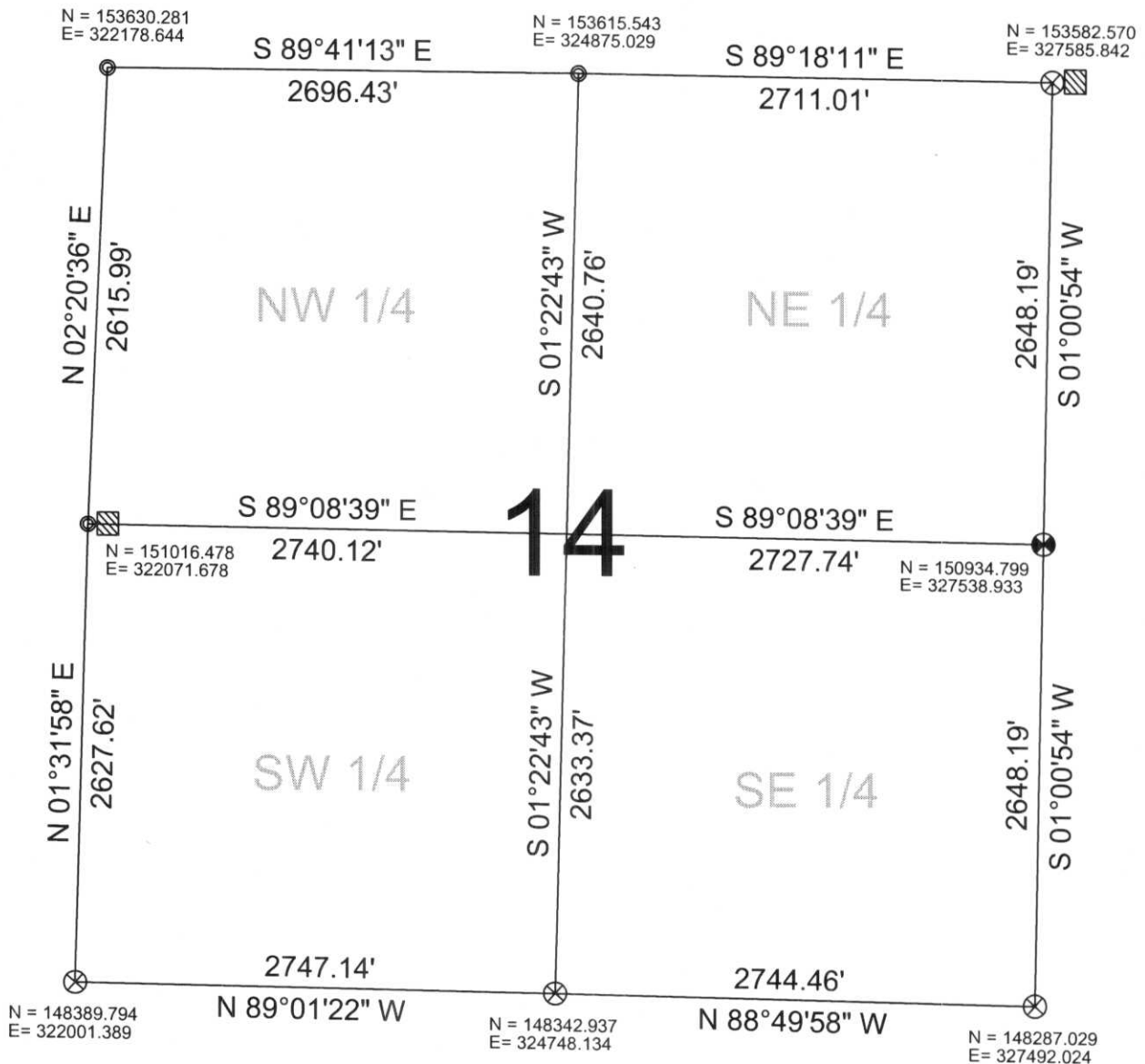
Registered Land Surveyor

DATE: Nov. 2, 2007



NOT TO SCALE
BEARINGS REFERENCED
TO LINCOLN COUNTY
COORDINATE SYSTEM

COORDINATES ARE REFERENCED
TO LINCOLN COUNTY COORDINATE
SYSTEM AS DEVELOPED BY THE WI.
DEPARTMENT OF TRANSPORTATION
AND ARE BASED ON GPS OBSERVATIONS
TO CONTROL POINTS AS SUPPLIED BY
LINCOLN COUNTY.



LEGEND

- FOUND 1.5" IRON PIPE
- ⊗ SET LINCOLN COUNTY BERNSTEN MOMUMENT
- ⊗ FOUND LINCOLN COUNTY BERNSTEN MOMUMENT
- ⊗ FOUND WOOD POST

DRAFTED BY: Lee
DATE: Oct. 31, 2007



CWE, Inc.
5707 Schofield Ave.
Weston, Wisconsin 54476
(715) 359-9400