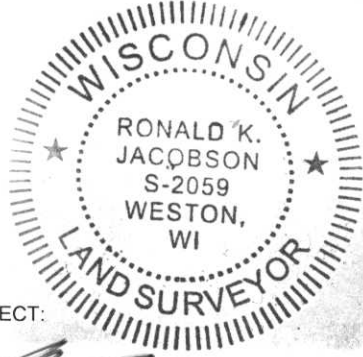


# LINCOLN COUNTY U.S. PUBLIC LAND SECTION SUMMARY

SECTION 12  
TOWNSHIP 32N  
RANGE 4 E

CORNING  
CITY, VILLAGE, TOWN

RECEIVED BY LINCOLN COUNTY  
SURVEYOR THIS 20<sup>TH</sup> DAY  
OF September 20 07  
Terry Dahl  
COUNTY SURVEYOR



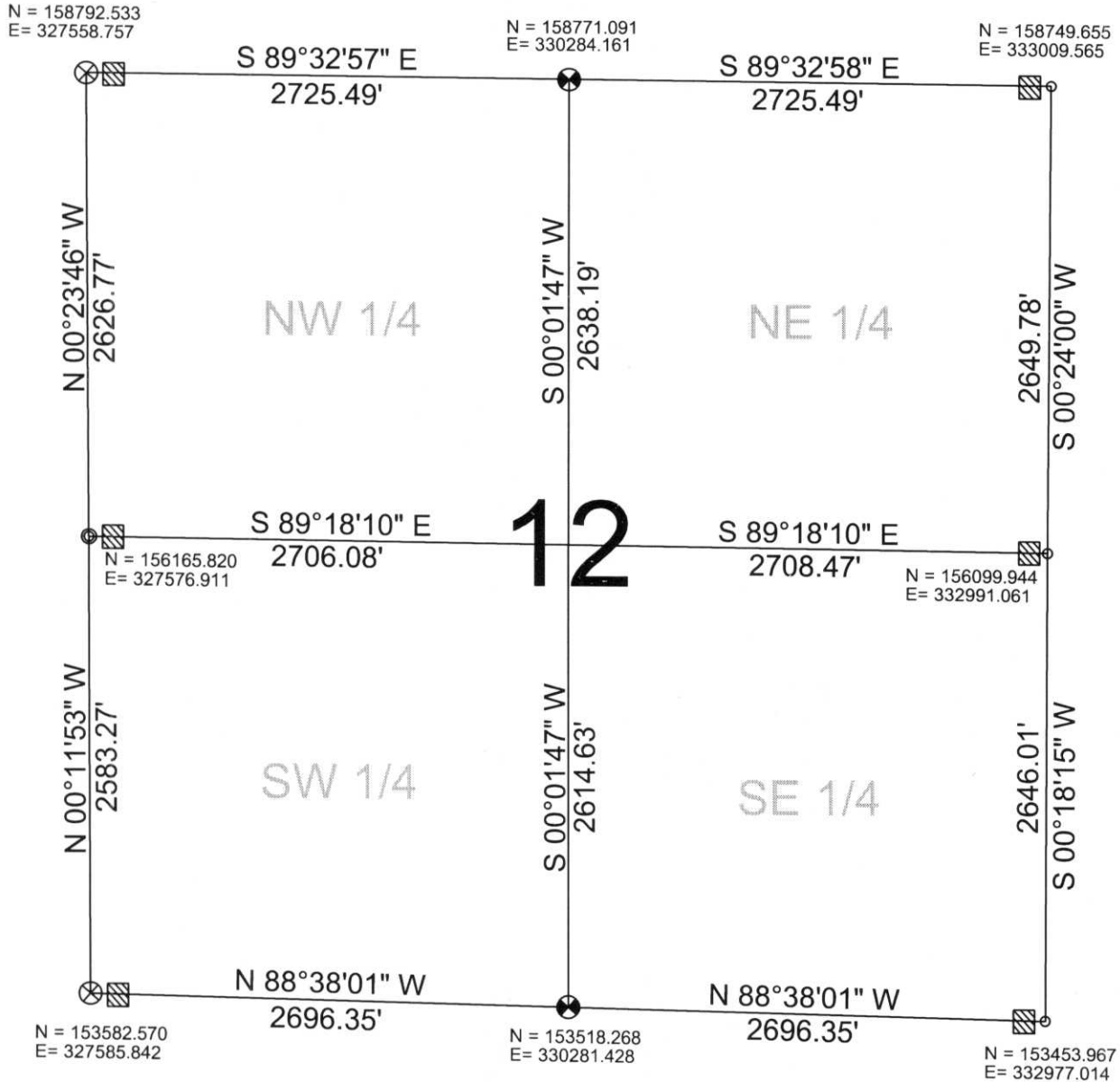
COORDINATES ARE REFERENCED  
TO LINCOLN COUNTY COORDINATE  
SYSTEM AS DEVELOPED BY THE WI.  
DEPARTMENT OF TRANSPORTATION  
AND ARE BASED ON GPS OBSERVATIONS  
TO CONTROL POINTS AS SUPPLIED BY  
LINCOLN COUNTY.

CERTIFIED CORRECT:

Ronald Jacobson  
Registered Land Surveyor  
RLS 2059-008

DATE: September 26, 2007

NOT TO SCALE  
BEARINGS REFERENCED  
TO LINCOLN COUNTY  
COORDINATE SYSTEM



### LEGEND

- FOUND 1.0" IRON PIPE
- ⊙ FOUND 1.5" IRON PIPE
- ⊗ SET LINCOLN COUNTY BERNSTEN MOMUMENT
- ⊗ FOUND LINCOLN COUNTY BERNSTEN MOMUMENT
- ▣ FOUND WOOD POST

DRAFTED BY: Rutzen  
DATE: September 26, 2007

Central Wisconsin Engineers & Architects  
5707 Schofield Ave.  
Weston, Wisconsin 54476  
(715) 359-9400