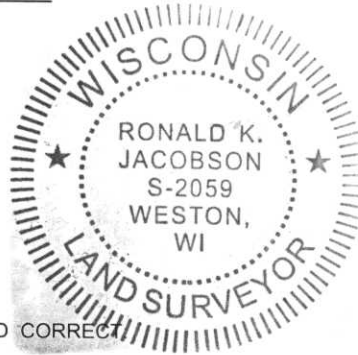


LINCOLN COUNTY U.S. PUBLIC LAND SECTION SUMMARY

SECTION 10
TOWNSHIP 32N
RANGE 4 E

CORNING
CITY, VILLAGE, TOWN

RECEIVED BY LINCOLN COUNTY
SURVEYOR THIS 2ND DAY
OF November 2007
Tony Dahl
COUNTY SURVEYOR



CERTIFIED CORRECT

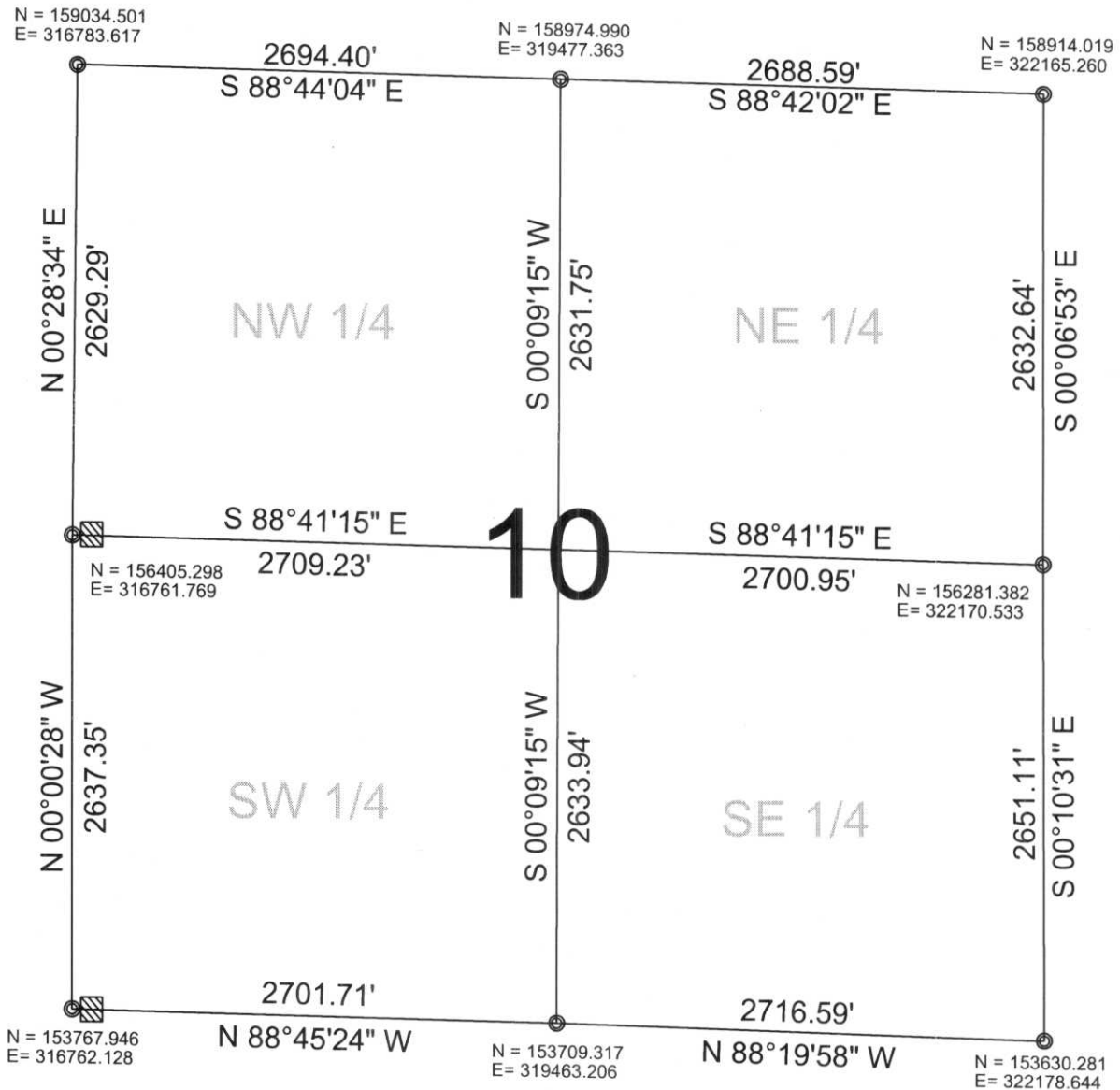
Ronald Jacobson RLS 2059-008
Registered Land Surveyor

DATE: Nov. 2, 2007



NOT TO SCALE
BEARINGS REFERENCED
TO LINCOLN COUNTY
COORDINATE SYSTEM

COORDINATES ARE REFERENCED
TO LINCOLN COUNTY COORDINATE
SYSTEM AS DEVELOPED BY THE WI.
DEPARTMENT OF TRANSPORTATION
AND ARE BASED ON GPS OBSERVATIONS
TO CONTROL POINTS AS SUPPLIED BY
LINCOLN COUNTY.



LEGEND

- FOUND 1.5" IRON PIPE
- ▨ FOUND WOOD POST

DRAFTED BY: Lee
DATE: Oct. 31, 2007



5707 Schofield Ave.
Weston, Wisconsin 54476
(715) 359-9400