

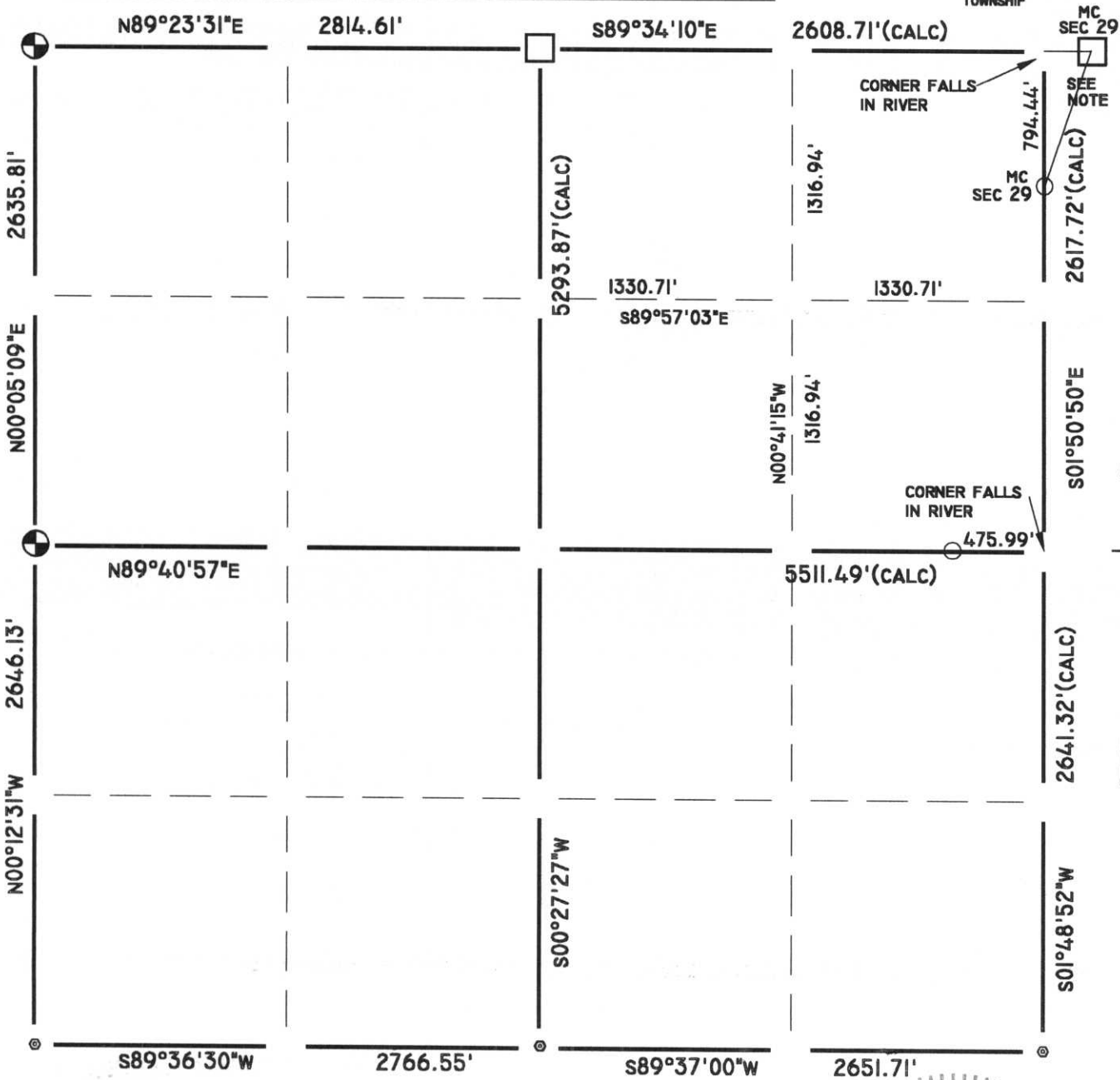
LINCOLN COUNTY

SECTION SUMMARY

30 - 31 - 07  
SECTION TOWN RANGE

SCOTT

BEARINGS REFERENCED TO: EAST LINE NE1/4 S01°50'50"E ABENDROTH SURVEYS

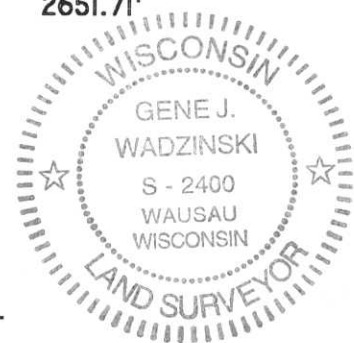


LEGEND

- ⊕ HARRISON OR BERNSTEN MONUMENT
- STONE OR CONCRETE MONUMENT
- RAILROAD SPIKE
- 2" IRON PIPE
- 1" IRON PIPE
- 1" IRON BAR
- ⊙ SURVEY MARKER PIN
- ⊙ PK

NOTE: NE CORNER LOCATION CALCULATED FROM PREVIOUS SURVEYS BY ED ABENDROTH

CERTIFIED CORRECT: Gene J. Wadzinski  
DATE: 12/29/99 RLS# 2400



911-15