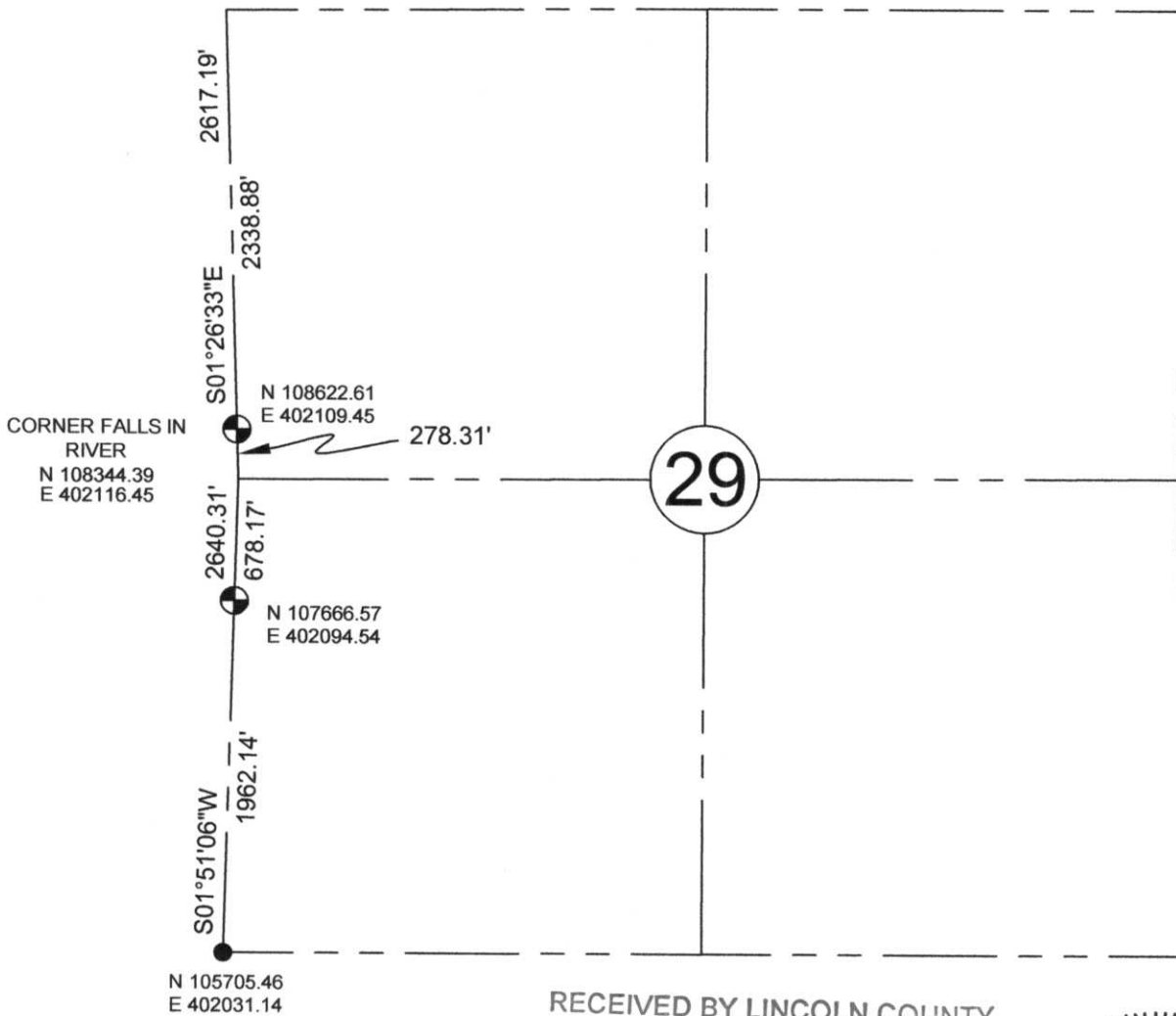


Lincoln County

SECTION SUMMARY

29	31N	7E
Section	Township	Range
PINE RIVER		
Town		

CORNER FALLS IN RIVER
 N 110960.75
 E 402050.57



NOTE:
 BEARINGS AND COORDINATES ARE BASED ON THE LINCOLN COUNTY COORDINATE SYSTEM AND REFERENCED TO THE PINE RIVER AND PINE DELLS GPS STATIONS.

RECEIVED BY LINCOLN COUNTY SURVEYOR THIS 6TH DAY OF January 20 06
Tony Dalk
 COUNTY SURVEYOR



LEGEND

- ⊕ - BERNSTEN MONUMENT
- - FOUND MAG NAIL
- ⊞ - FOUND GRANITE STONE
- - SURVEY MARKING PIN

CERTIFIED CORRECT:

Keith J. Walkowski
 KEITH J. WALKOWSKI
 Registered Land Surveyor
 DATE: Jan. 6TH, 2006

Q.M.: 59