

LINCOLN
COUNTY

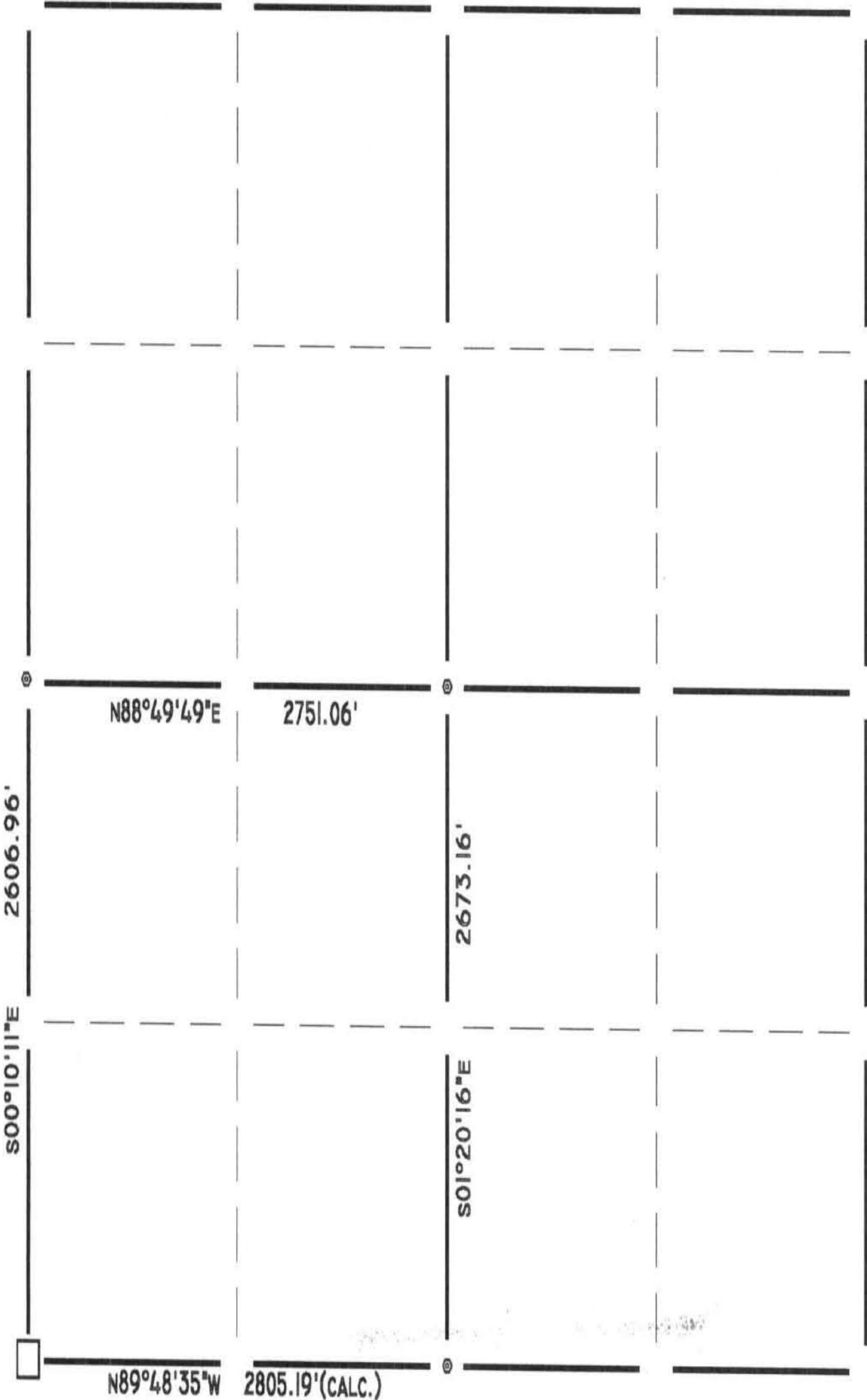
SECTION
SUMMARY

18 - 31 - 07
SECTION TOWN RANGE

SCOTT

BEARINGS REFERENCED TO: RIO GRANDE SUBDIVISION N88°49'49"E

TOWNSHIP



LEGEND

- HARRISON OR BERNSTEN MONUMENT
- STONE OR CONCRETE MONUMENT
- RAILROAD SPIKE
- 2" IRON PIPE
- 1" IRON PIPE
- 1" IRON BAR
- SURVEY MARKER PIN
- PK

RECEIVED AT LINCOLN COUNTY
COURTHOUSE THIS 28th DAY
OF Dec. 19 99
Pat Priebe
LAND INFORMATION OFFICE

CERTIFIED CORRECT: Gene Wadzinski
DATE 12/6/99 RLS# 2400



51-15