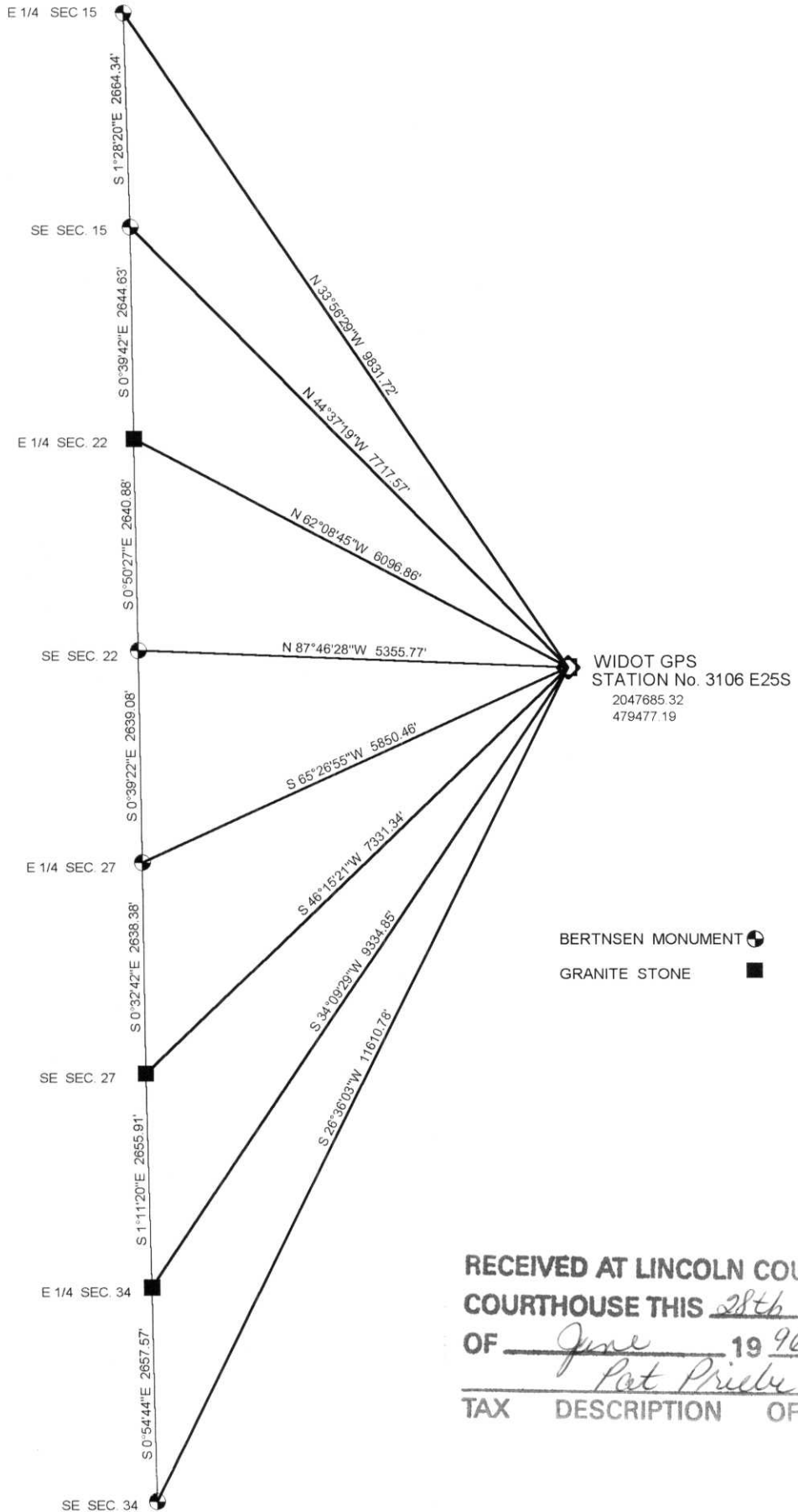


SECTION CORNER TIE SHEET

T31N, R6E,

TOWN OF SCOTT, LINCOLN COUNTY, WISCONSIN



RECEIVED AT LINCOLN COUNTY
 COURTHOUSE THIS 28th DAY
 OF June 1996
Pat Pribe
 TAX DESCRIPTION OFFICE

K: 4 - 17