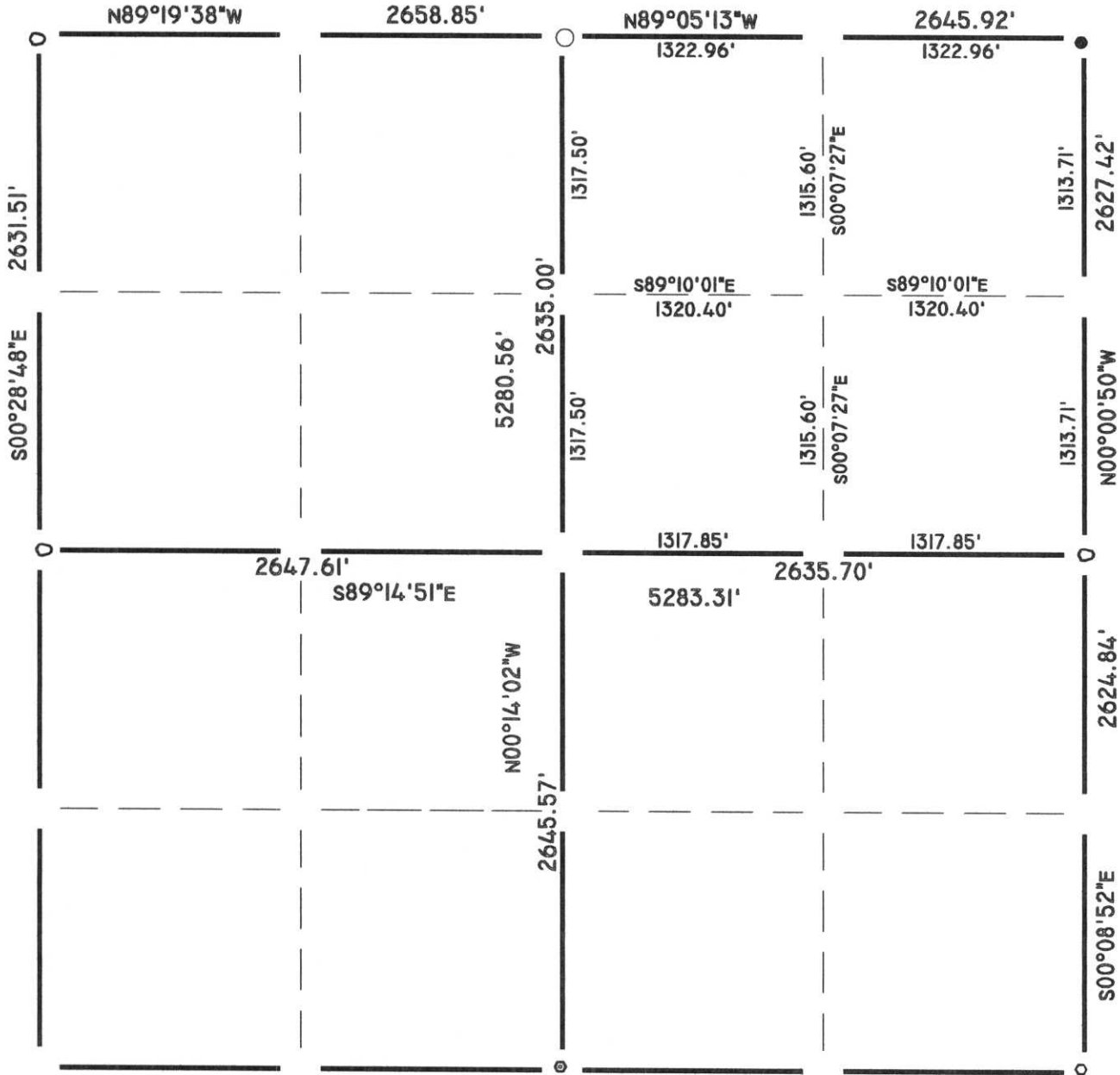


LINCOLN COUNTY

SECTION SUMMARY

36 - 31 - 05
SECTION TOWN RANGE
CORNING TOWNSHIP



LEGEND

- 7/8" REBAR WITH CAP SET
- STONE OR CONCRETE MONUMENT
- RAILROAD SPIKE OVER STONE MON.
- 1" IRON PIPE OVER STONE
- 2" IRON PIPE W/CAP
- 60D SPIKE
- PK NAIL

RECEIVED BY LINCOLN COUNTY SURVEYOR THIS 1ST DAY OF June 20 04
Tony Wall
COUNTY SURVEYOR

CERTIFIED CORRECT: [Signature]
DATE 5-25-04 RLS# 1691



U.P. - 21:25

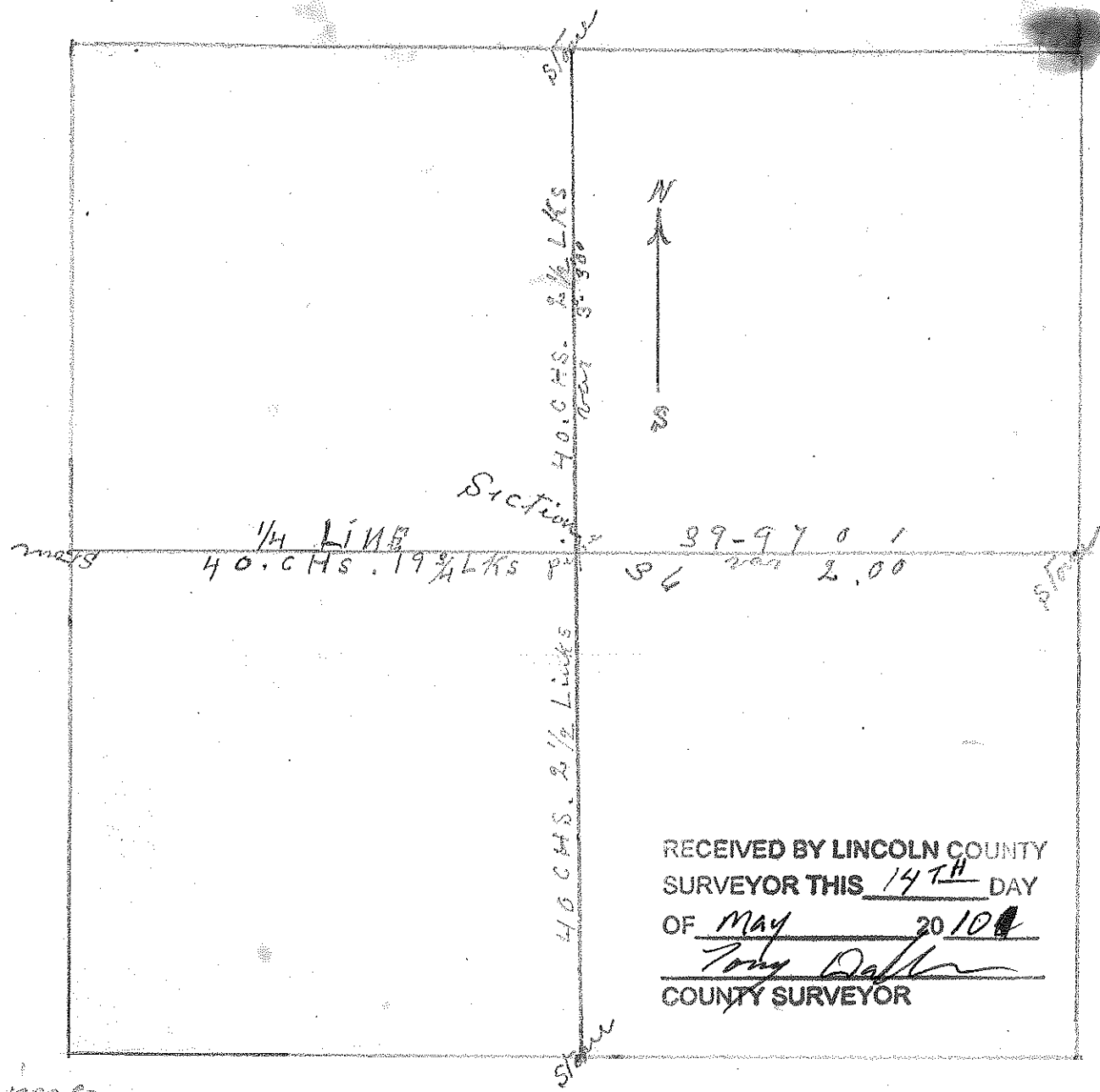
OFFICE OF
COUNTY SURVEYOR

MARATHON COUNTY
R. H. BROWN, Surveyor

TOWN - ? (30)
RANGE - 5
SEC. - 36

UNITY, WIS. Sept 4. 1930

Subdivision of Sect 34 Town 81 Range 5 East
as made by me this 4th day September A.D. 1930
and that the same is correct as my belief
Signed R. H. Brown County Surveyor Marathon



RECEIVED BY LINCOLN COUNTY
SURVEYOR THIS 14TH DAY
OF MAY 20 1900
Tony Daffin
COUNTY SURVEYOR

men
Edgar Ayer
August Radloff