

# LINCOLN COUNTY U.S. PUBLIC LAND SECTION SUMMARY

SECTION 35  
TOWNSHIP 31N  
RANGE 5 E



CORNING  
CITY, VILLAGE, TOWN

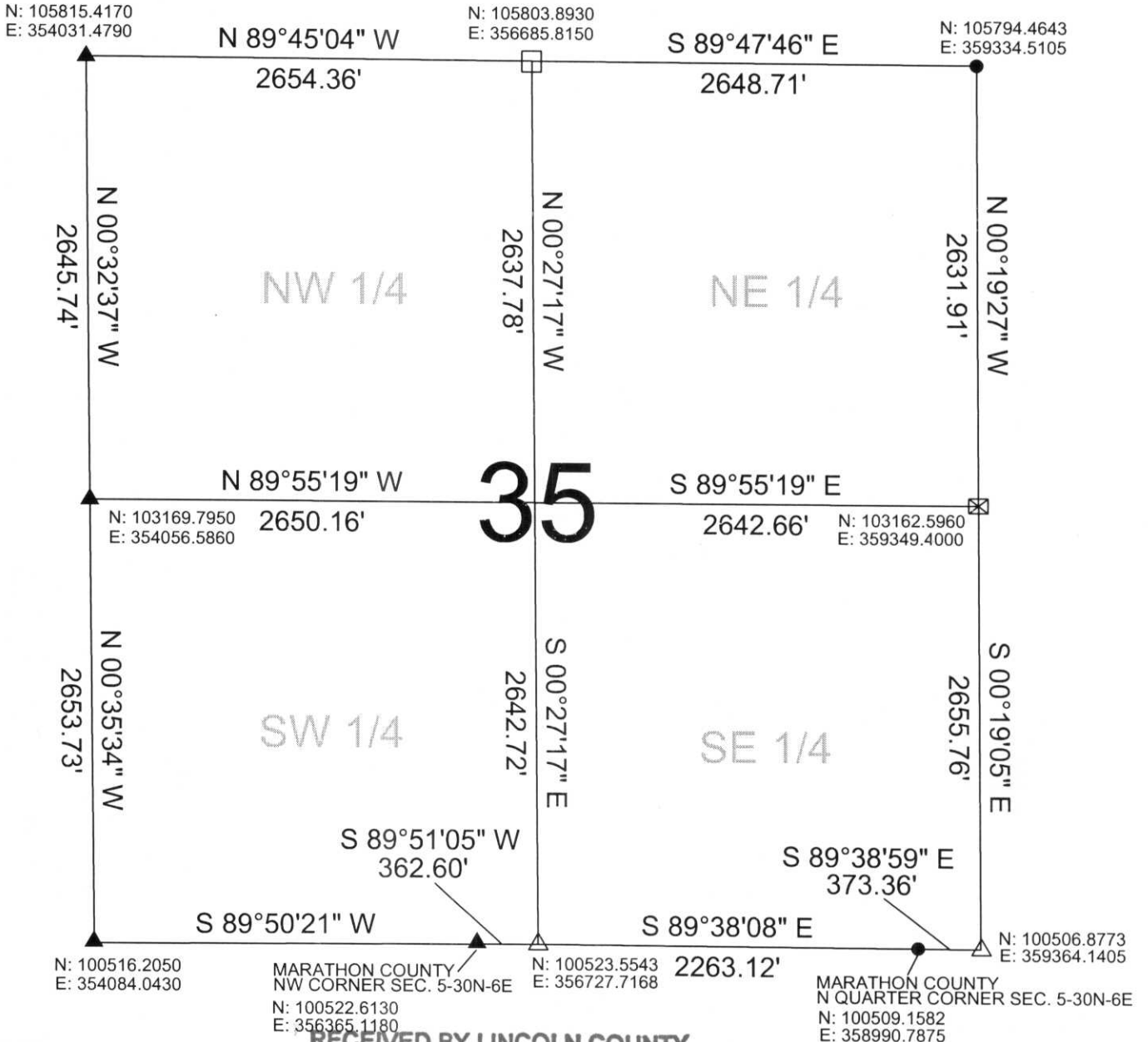
COORDINATES ARE REFERENCED TO LINCOLN COUNTY COORDINATE SYSTEM AS DEVELOPED BY THE WI. DEPARTMENT OF TRANSPORTATION AND ARE BASED ON GPS OBSERVATIONS TO CONTROL POINTS AS SUPPLIED BY LINCOLN COUNTY.

CERTIFIED CORRECT:

*[Signature]*  
Ronald Jacobson RLS 2059-008  
Registered Land Surveyor  
DATE: July 21, 2006



NOT TO SCALE  
BEARINGS REFERENCED TO LINCOLN COUNTY COORDINATE SYSTEM



RECEIVED BY LINCOLN COUNTY

- LEGEND**
- ▲ FOUND MAG NAIL
  - △ SET SURVEY NAIL
  - CALCULATED PER TIE SHEET ON RECORD
  - LIMESTONE MONUMENT
  - ⊠ FOUND RAILROAD SPIKE

SURVEYOR THIS 21<sup>ST</sup> DAY  
OF July 20 06  
*Tony Dahl*  
COUNTY SURVEYOR

DRAFTED BY: Seubert  
DATE: July 21, 2006

Central Wisconsin Engineers & Architects  
5707 Schofield Ave.  
Weston, Wisconsin 54476  
(715) 359-3400

W:Y-17:21