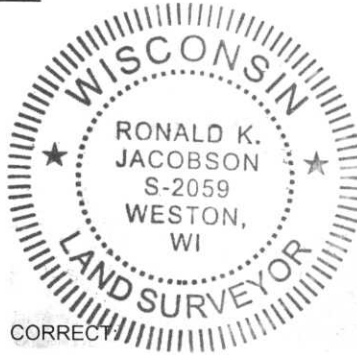


LINCOLN COUNTY U.S. PUBLIC LAND SECTION SUMMARY

SECTION 29
TOWNSHIP 31N
RANGE 5 E

CORNING
CITY, VILLAGE, TOWN



CERTIFIED CORRECT

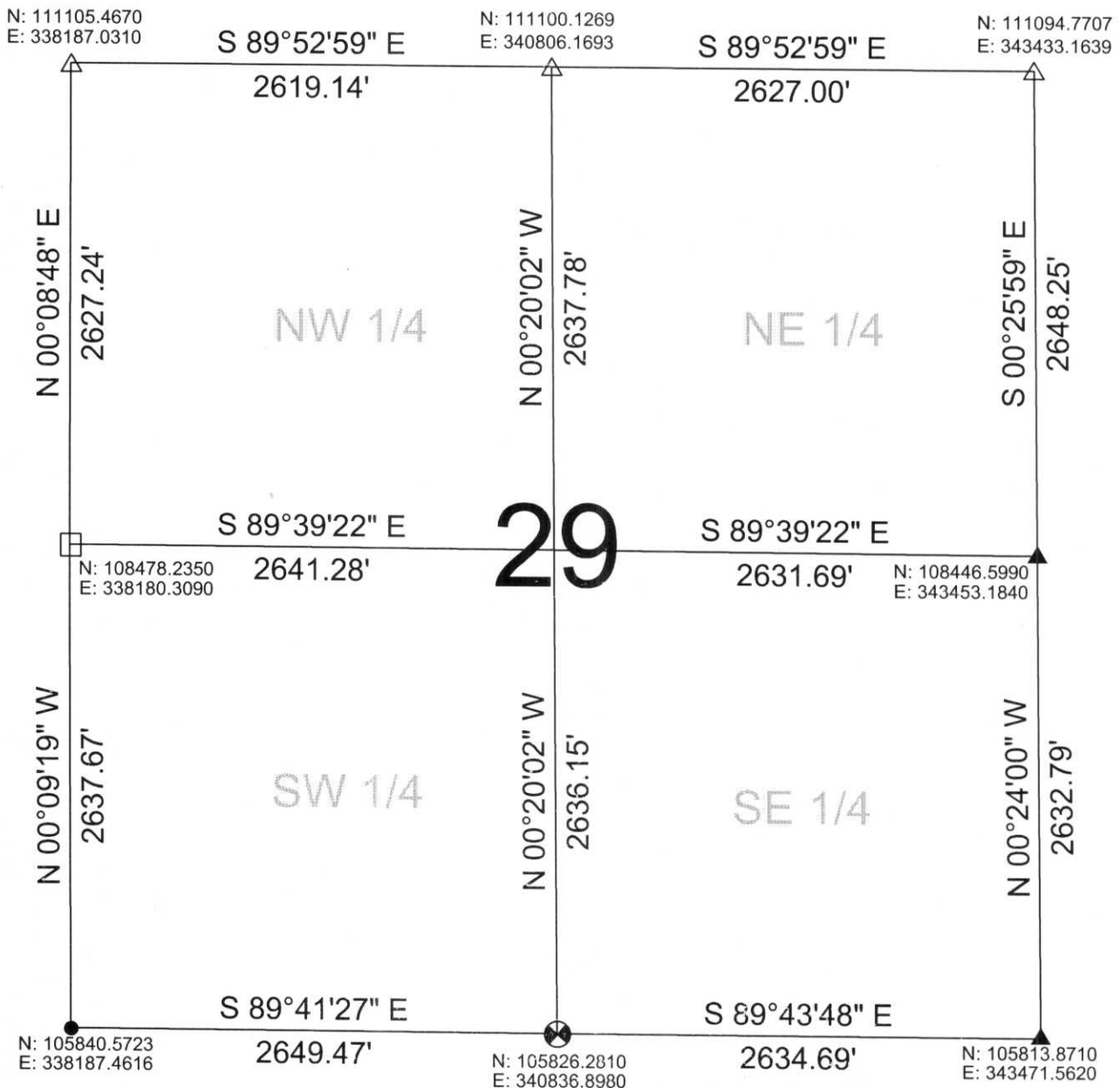
Ronald Jacobson
Ronald Jacobson RLS 2059-008
Registered Land Surveyor

DATE: August 4, 2006



NOT TO SCALE
BEARINGS REFERENCED
TO LINCOLN COUNTY
CORDINATE SYSTEM

COORDINATES ARE REFERENCED
TO LINCOLN COUNTY COORDINATE
SYSTEM AS DEVELOPED BY THE WI.
DEPARTMENT OF TRANSPORTATION
AND ARE BASED ON GPS OBSERVATIONS
TO CONTROL POINTS AS SUPPLIED BY
LINCOLN COUNTY.



LEGEND

- ▲ FOUND MAG NAIL
- △ SET SURVEY NAIL
- CALCULATED PER TIE SHEET ON RECORD
- ⊗ FOUND LINCOLN COUNTY BERNSTEN MOMUMENT
- FOUND STONE

RECEIVED BY LINCOLN COUNTY

SURVEYOR THIS 7TH DAY

OF August 20, 06

Jerry Dall

COUNTY SURVEYOR

DRAFTED BY: Seubert

DATE: August 4, 2006

Central Wisconsin Engineers & Architects
5707 Schofield Ave.
Weston, Wisconsin 54476
(715) 359-3400