

# LINCOLN COUNTY U.S. PUBLIC LAND SECTION SUMMARY

SECTION 24  
TOWNSHIP 31N  
RANGE 5 E

CORNING  
CITY, VILLAGE, TOWN



CERTIFIED CORRECT

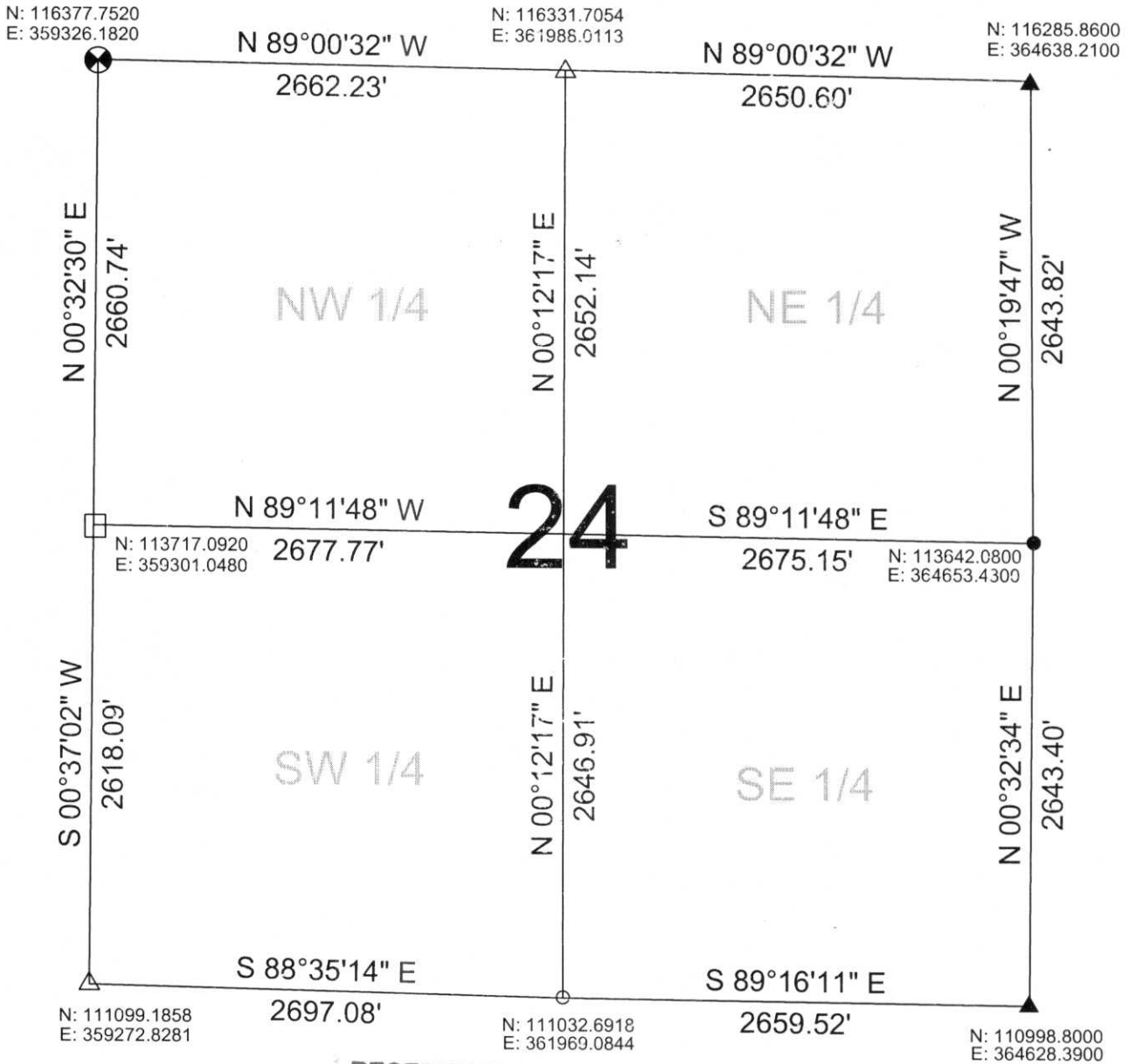
*[Signature]*  
Ronald Jacobson RLS 2059-008  
Registered Land Surveyor

DATE: July 21, 2006



NOT TO SCALE  
BEARINGS REFERENCED  
TO LINCOLN COUNTY  
CORDINATE SYSTEM

COORDINATES ARE REFERENCED  
TO LINCOLN COUNTY COORDINATE  
SYSTEM AS DEVELOPED BY THE WI.  
DEPARTMENT OF TRANSPORTATION  
AND ARE BASED ON GPS OBSERVATIONS  
TO CONTROL POINTS AS SUPPLIED BY  
LINCOLN COUNTY.



RECEIVED BY LINCOLN COUNTY  
SURVEYOR THIS 21<sup>st</sup> DAY  
OF July 20 06  
*[Signature]*  
COUNTY SURVEYOR

- LEGEND**
- ▲ FOUND PK NAIL
  - △ SET SURVEY NAIL
  - CALCULATED PER COORDINATES GIVEN BY LINCOLN COUNTY SURVEYOR
  - CALCULATED PER TIE SHEET ON RECORD
  - ⊗ LINCOLN COUNTY BERNSTEN MOMUMENT
  - FOUND 6"X6" LIMESTONE

DRAFTED BY: Seubert  
DATE: July 21, 2006

Central Wisconsin Engineers & Architects  
5707 Schofield Ave.  
Weston, Wisconsin 54476  
(715) 359-3400

M:O - 21.25