

LINCOLN COUNTY U.S. PUBLIC LAND SECTION SUMMARY

SECTION 21
TOWNSHIP 31N
RANGE 5 E

CORNING
CITY, VILLAGE, TOWN



CERTIFIED CORRECT

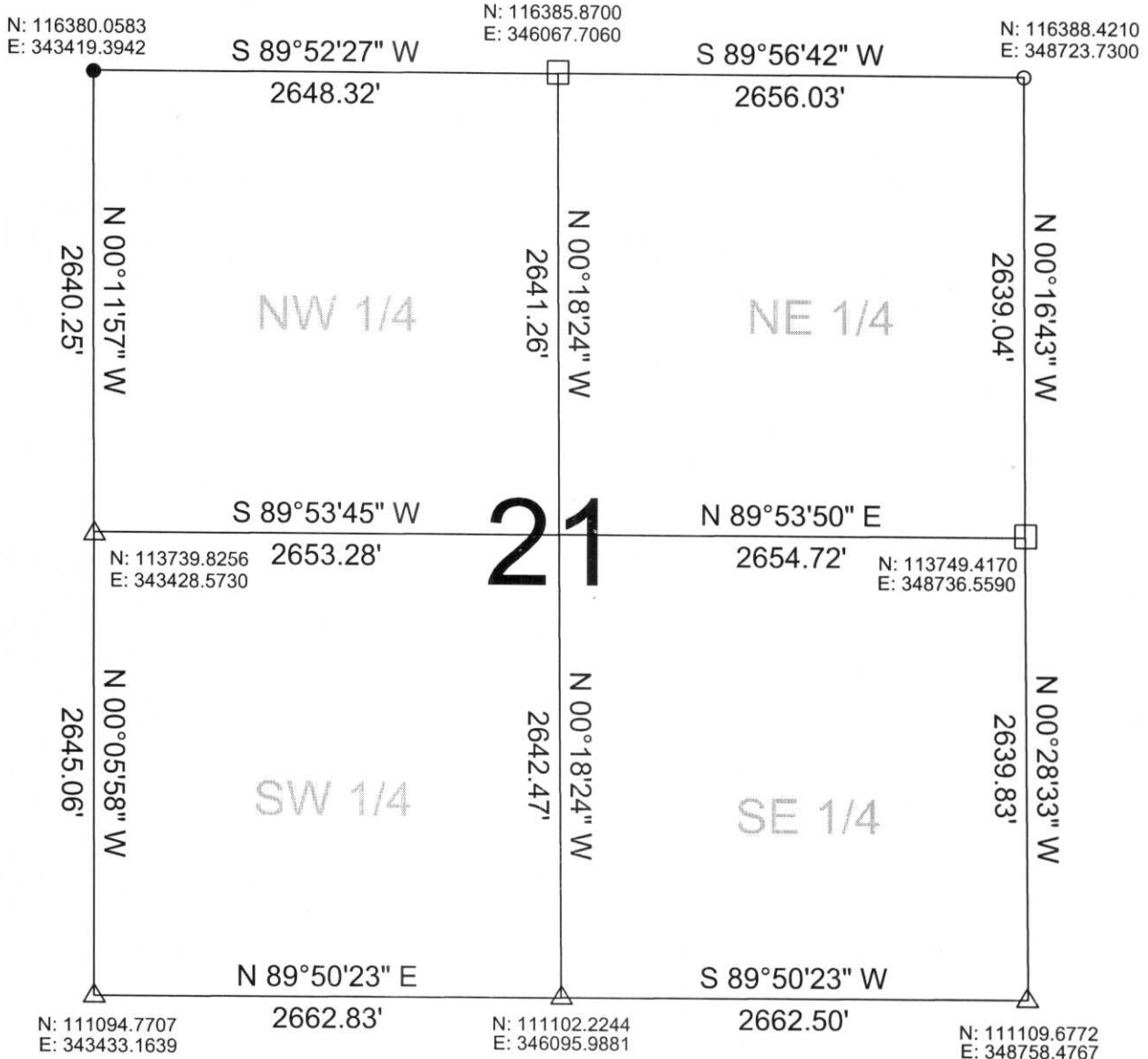
Ronald Jacobson
Ronald Jacobson RLS 2059-008

Registered Land Surveyor

DATE: July 10, 2006

COORDINATES ARE REFERENCED TO LINCOLN COUNTY COORDINATE SYSTEM AS DEVELOPED BY THE WI. DEPARTMENT OF TRANSPORTATION AND ARE BASED ON GPS OBSERVATIONS TO CONTROL POINTS AS SUPPLIED BY LINCOLN COUNTY.

N
NOT TO SCALE
BEARINGS REFERENCED TO LINCOLN COUNTY COORDINATE SYSTEM



LEGEND

- FOUND SPIKE
- △ SET SURVEY NAIL
- CALCULATED PER TIE SHEET ON RECORD
- 6"X6" STONE

RECEIVED BY LINCOLN COUNTY
SURVEYOR THIS 12TH DAY
OF July 20 06
Tony Dall
COUNTY SURVEYOR

DRAFTED BY: Seubert
DATE: July 10, 2006

Central Wisconsin Engineers & Architects
5707 Schofield Ave.
Weston, Wisconsin 54476
(715) 359-3400

M: 8-9:13