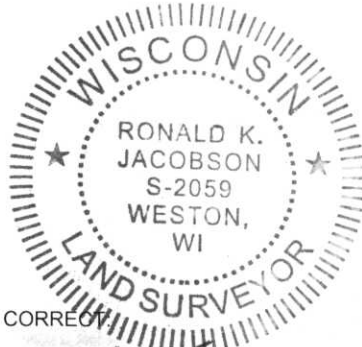


LINCOLN COUNTY U.S. PUBLIC LAND SECTION SUMMARY

SECTION 19
TOWNSHIP 31N
RANGE 5E

CORNING
CITY, VILLAGE, TOWN



CERTIFIED CORRECT

Ronald Jacobson RLS 2059-008

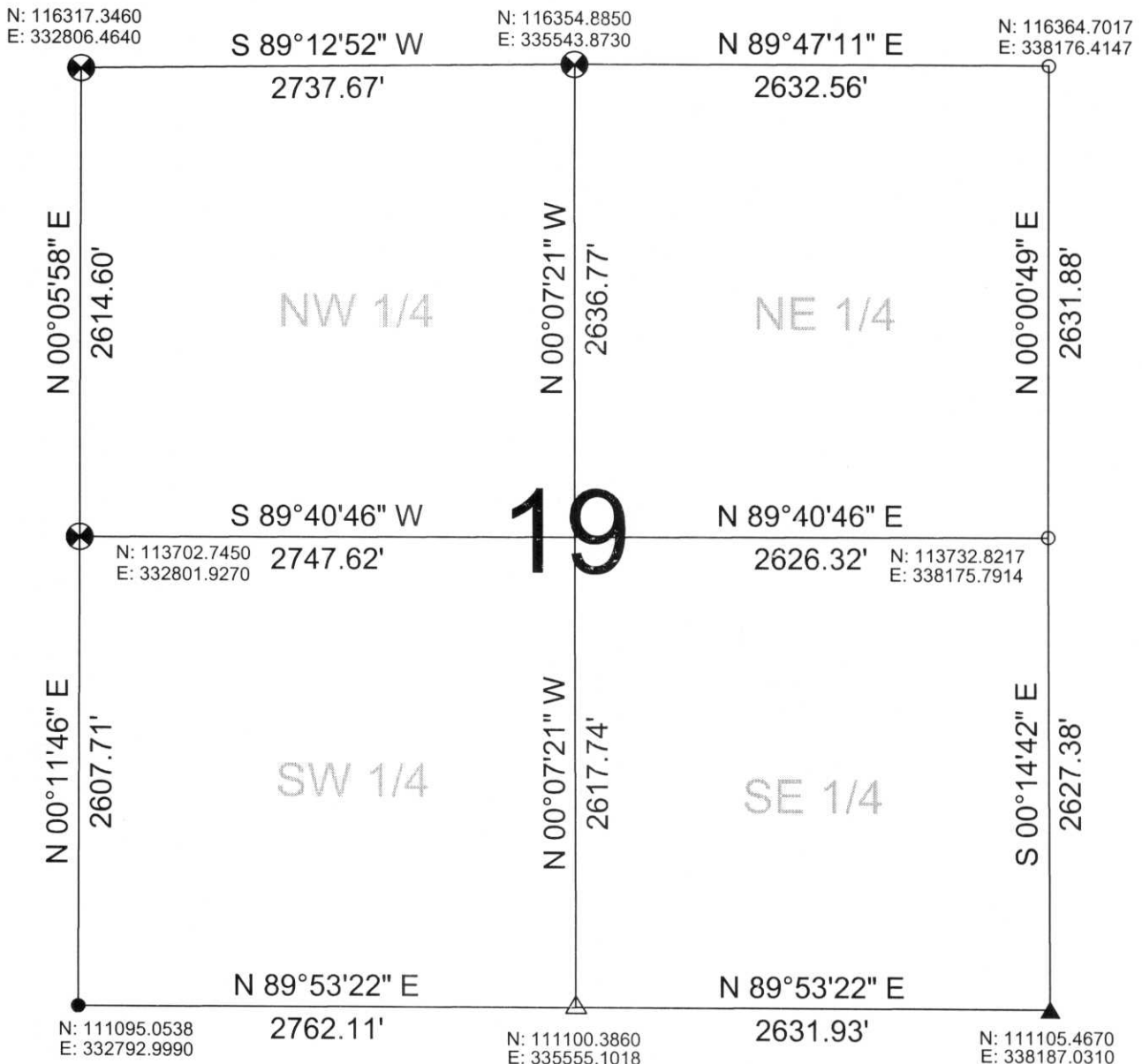
Registered Land Surveyor

DATE: July 21, 2006



NOT TO SCALE
BEARINGS REFERENCED
TO LINCOLN COUNTY
CORDINATE SYSTEM

COORDINATES ARE REFERENCED
TO LINCOLN COUNTY COORDINATE
SYSTEM AS DEVELOPED BY THE WI.
DEPARTMENT OF TRANSPORTATION
AND ARE BASED ON GPS OBSERVATIONS
TO CONTROL POINTS AS SUPPLIED BY
LINCOLN COUNTY.



RECEIVED BY LINCOLN COUNTY

SURVEYOR THIS 21ST DAY

OF July 20 06

Tony Dahl
COUNTY SURVEYOR

DRAFTED BY: Seubert
DATE: July 21, 2006

Central Wisconsin Engineers & Architects
5707 Schofield Ave.
Weston, Wisconsin 54476
(715) 359-3400

LEGEND

- ▲ FOUND MAG NAIL
- △ SET SURVEY NAIL
- CALCULATED PER COORDINATES GIVEN BY LINCOLN COUNTY SURVEYOR
- CALCULATED PER TIE SHEET ON RECORD
- ⊗ LINCOLN COUNTY BERNSTEN MOMUMENT

M.D. - 1:5