

LINCOLN COUNTY U.S. PUBLIC LAND

SECTION SUMMARY

SECTION 18
 TOWNSHIP 31N
 RANGE 5 E



CORNING
 CITY, VILLAGE, TOWN



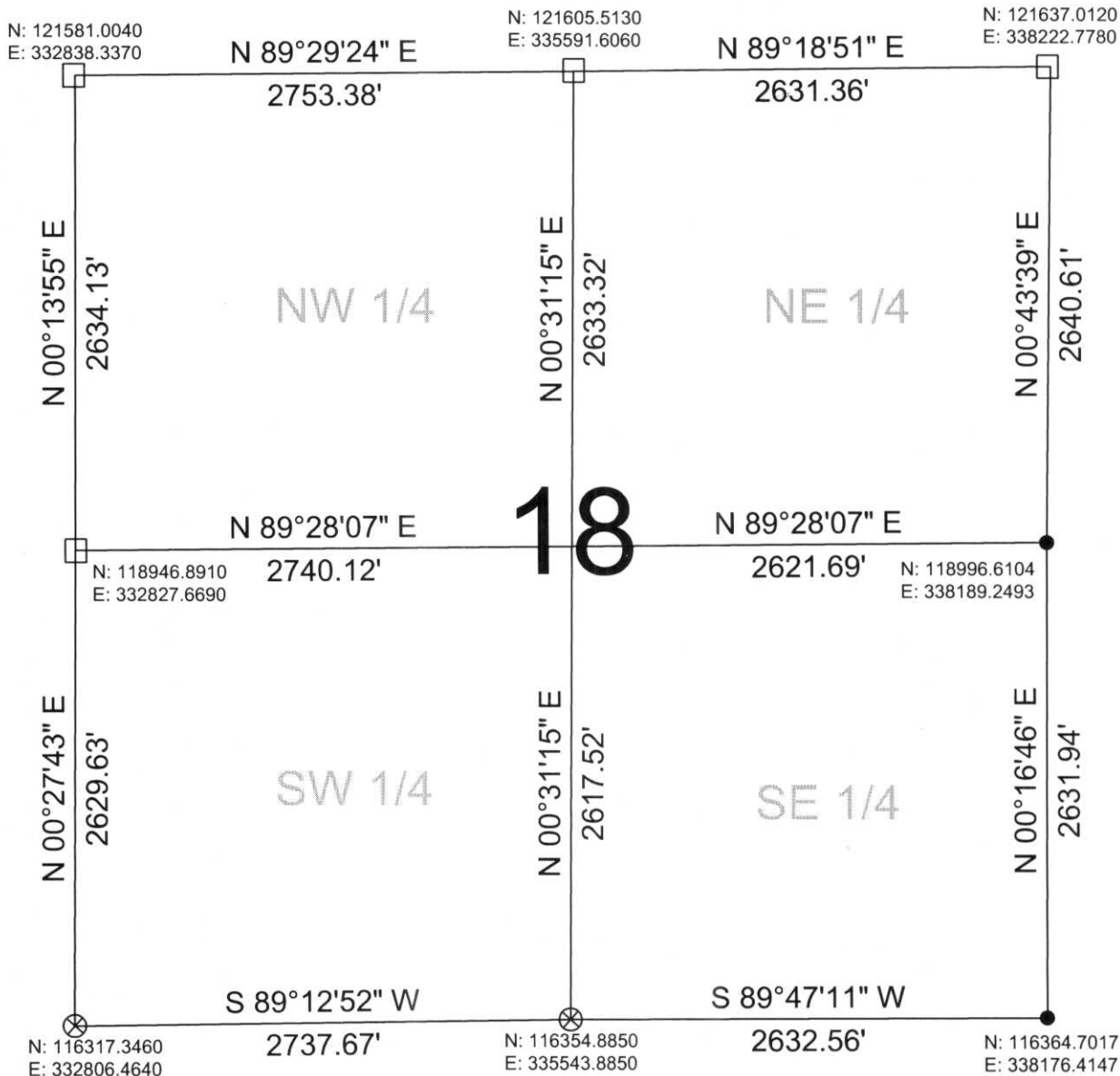
COORDINATES ARE REFERENCED TO LINCOLN COUNTY COORDINATE SYSTEM AS DEVELOPED BY THE WI. DEPARTMENT OF TRANSPORTATION AND ARE BASED ON GPS OBSERVATIONS TO CONTROL POINTS AS SUPPLIED BY LINCOLN COUNTY.

CERTIFIED CORRECT:

Ronald K. Jacobson
 Ronald Jacobson RLS 2059-008
 Registered Land Surveyor

DATE: August 4, 2006

NOT TO SCALE
 BEARINGS REFERENCED TO LINCOLN COUNTY COORDINATE SYSTEM



RECEIVED BY LINCOLN COUNTY

- LEGEND**
- FOUND STONE MONUMENT
 - CALCULATED PER TIE SHEET ON RECORD
 - ⊗ FOUND LINCOLN COUNTY BERNSTEN MOMUMENT

SURVEYOR THIS 7TH DAY
 OF August 20 06
Tony Dahn
 COUNTY SURVEYOR

DRAFTED BY: Seubert
 DATE: August 4, 2006

Central Wisconsin Engineers & Architects
 5707 Schofield Ave.
 Weston, Wisconsin 54476
 (715) 359-3400