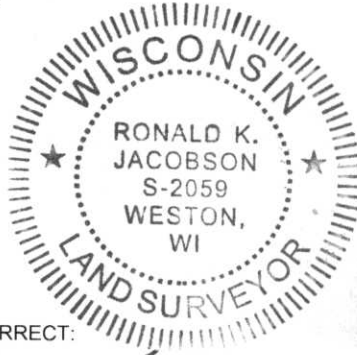


# LINCOLN COUNTY U.S. PUBLIC LAND SECTION SUMMARY

SECTION 17  
TOWNSHIP 31N  
RANGE 5E

CORNING  
CITY, VILLAGE, TOWN



NOT TO SCALE  
BEARINGS REFERENCED  
TO LINCOLN COUNTY  
CORDINATE SYSTEM

COORDINATES ARE REFERENCED  
TO LINCOLN COUNTY COORDINATE  
SYSTEM AS DEVELOPED BY THE WI.  
DEPARTMENT OF TRANSPORTATION  
AND ARE BASED ON GPS OBSERVATIONS  
TO CONTROL POINTS AS SUPPLIED BY  
LINCOLN COUNTY.

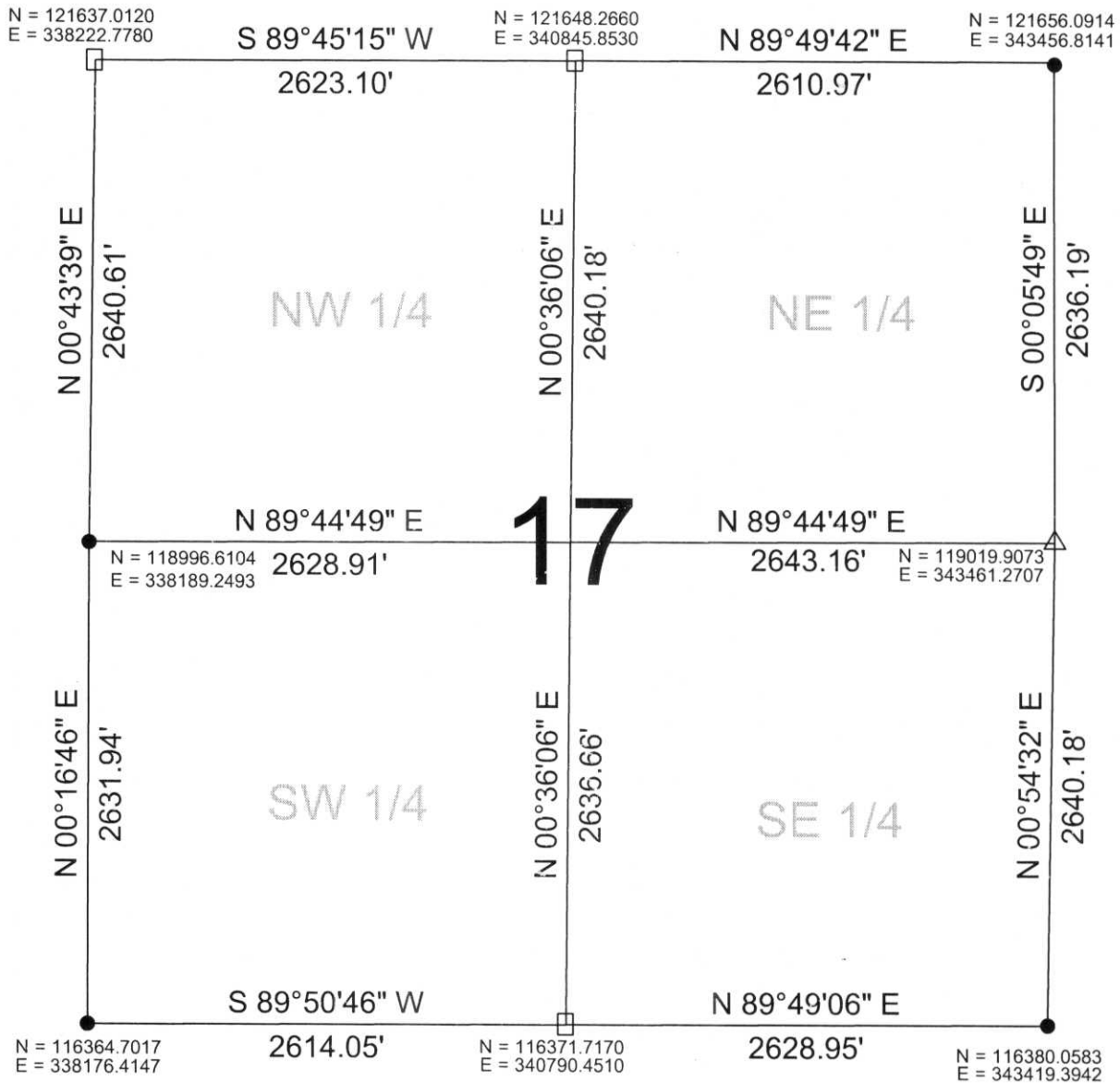
CERTIFIED CORRECT:

*Ronald Jacobson*

Ronald Jacobson RLS 2059-008

Registered Land Surveyor

DATE: July 21, 2006



### LEGEND

- CALCULATED PER COORDINATES  
GIVEN BY LINCOLN COUNTY SURVEYOR
- FOUND STONE MONUMENT
- △ SET SURVEY NAIL

RECEIVED BY LINCOLN COUNTY

SURVEYOR THIS 21<sup>ST</sup> DAY

OF July 20 06

*Terry Wall*

COUNTY SURVEYOR

DRAFTED BY: Seubert

DATE: July 21, 2006

Central Wisconsin Engineers & Architects  
5707 Schofield Ave.  
Weston, Wisconsin 54476  
(715) 359-3400

b:5-W:I