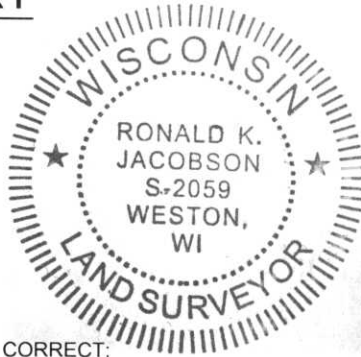


LINCOLN COUNTY U.S. PUBLIC LAND SECTION SUMMARY

SECTION 15
TOWNSHIP 31N
RANGE 5 E

CORNING
CITY, VILLAGE, TOWN



COORDINATES ARE REFERENCED TO LINCOLN COUNTY COORDINATE SYSTEM AS DEVELOPED BY THE WI. DEPARTMENT OF TRANSPORTATION AND ARE BASED ON GPS OBSERVATIONS TO CONTROL POINTS AS SUPPLIED BY LINCOLN COUNTY.

CERTIFIED CORRECT:

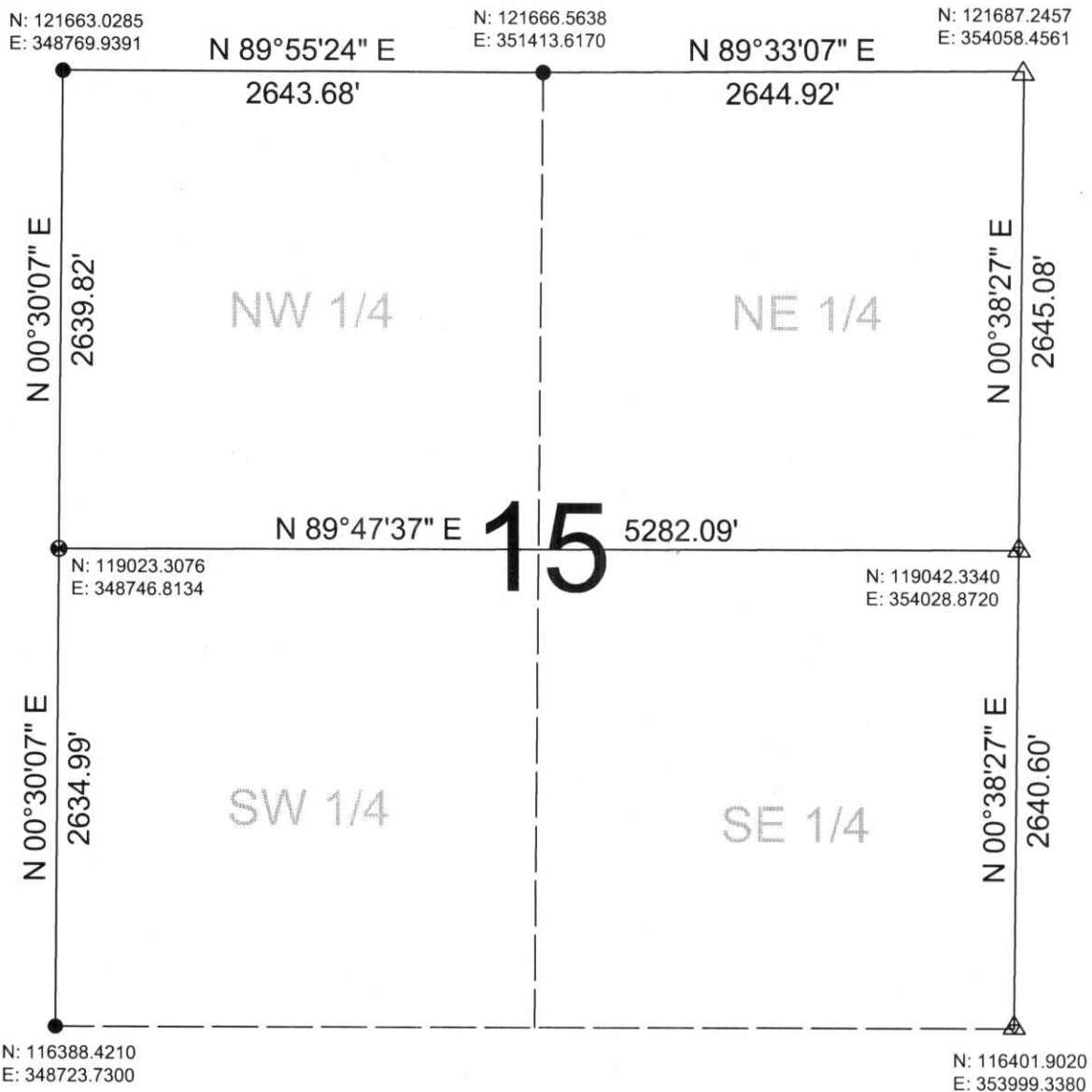
[Signature]

Ronald Jacobson RLS 2059-008

Registered Land Surveyor

DATE: August 4 2006

NOT TO SCALE
BEARINGS REFERENCED TO LINCOLN COUNTY COORDINATE SYSTEM



RECEIVED BY LINCOLN COUNTY

SURVEYOR THIS 7TH DAY

OF August 20 06

[Signature]
COUNTY SURVEYOR

DRAFTED BY: Seubert
DATE: August 4, 2006

Central Wisconsin Engineers & Architects
5707 Schofield Ave.
Weston, Wisconsin 54476
(715) 359-3400

LEGEND

- CALCULATED PER TIE SHEET ON RECORD
- △ SET SURVEY NAIL
- ▲ FOUND SURVEY NAIL
- ⊙ SET LINCOLN COUNTY BERNSTEN MOMUMENT