

# LINCOLN COUNTY U.S. PUBLIC LAND SECTION SUMMARY

SECTION 14  
TOWNSHIP 31N  
RANGE 5 E

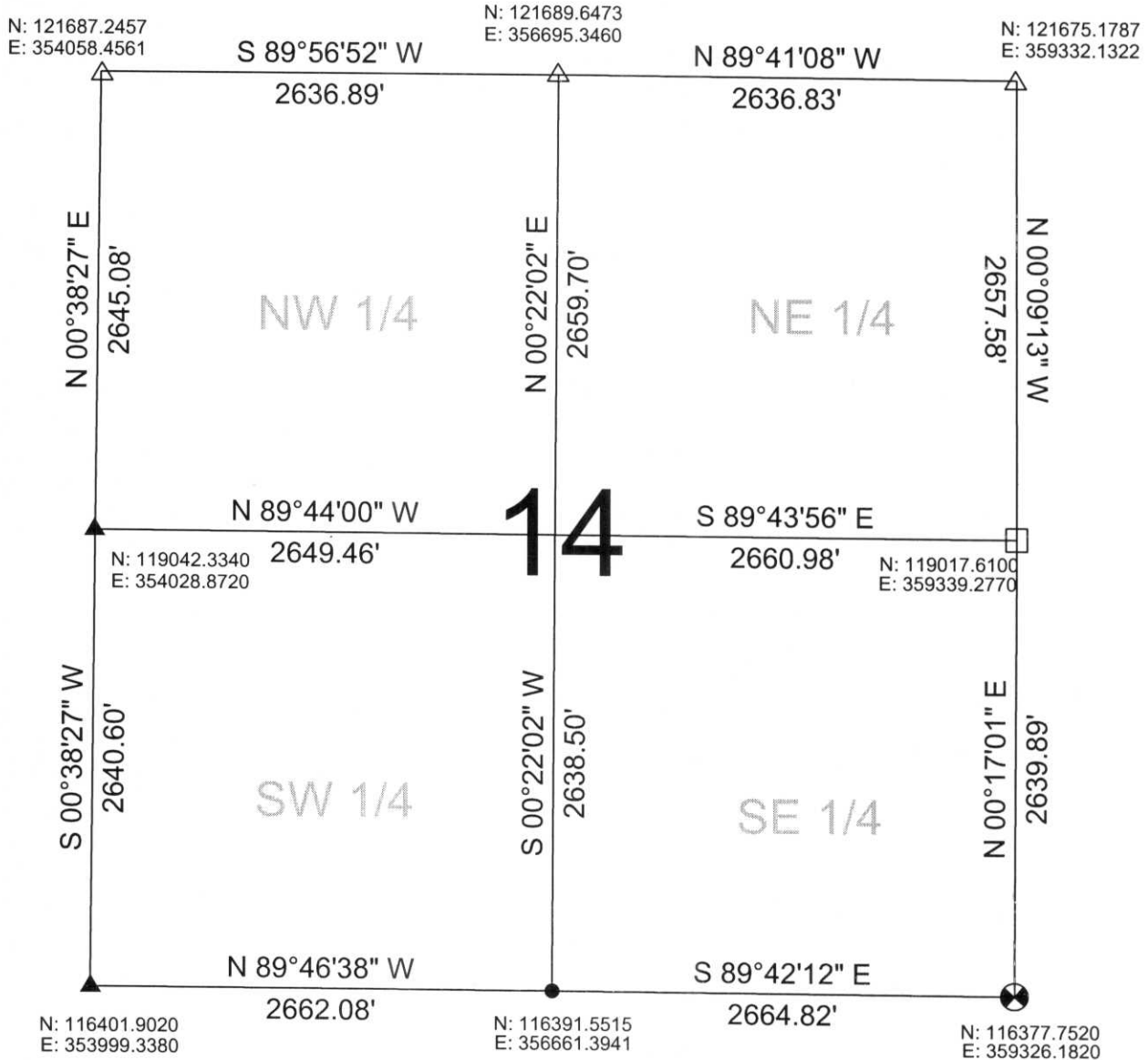
CORNING  
CITY, VILLAGE, TOWN



CERTIFIED CORRECT  
*[Signature]*  
Ronald Jacobson RLS 2059-008  
Registered Land Surveyor  
DATE: July 10, 2006

COORDINATES ARE REFERENCED TO LINCOLN COUNTY COORDINATE SYSTEM AS DEVELOPED BY THE WI. DEPARTMENT OF TRANSPORTATION AND ARE BASED ON GPS OBSERVATIONS TO CONTROL POINTS AS SUPPLIED BY LINCOLN COUNTY.

NOT TO SCALE  
BEARINGS REFERENCED TO LINCOLN COUNTY COORDINATE SYSTEM



**LEGEND**

- ▲ FOUND SURVEY NAIL
- △ SET SURVEY NAIL
- CALCULATED PER TIE SHEET ON RECORD
- 6"X6" STONE
- ⊗ LINCOLN COUNTY BERNSTEN MOMUMENT

RECEIVED BY LINCOLN COUNTY

SURVEYOR THIS 12<sup>TH</sup> DAY  
OF July 20 06  
*[Signature]*  
COUNTY SURVEYOR  
DRAFTED BY: Seubert  
DATE: July 10, 2006

Central Wisconsin Engineers & Architects  
5707 Schofield Ave.  
Weston, Wisconsin 54476  
(715) 359-3400

I: m - 17:21