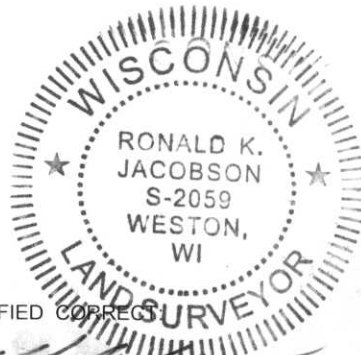


LINCOLN COUNTY U.S. PUBLIC LAND SECTION SUMMARY

SECTION 12
TOWNSHIP 31N
RANGE 5 E

RECEIVED BY LINCOLN COUNTY
SURVEYOR THIS 12TH DAY
OF June 20 06
Tony Dahl
COUNTY SURVEYOR



CORNING
CITY, VILLAGE, TOWN



COORDINATES ARE REFERENCED
TO LINCOLN COUNTY COORDINATE
SYSTEM AS DEVELOPED BY THE WI.
DEPARTMENT OF TRANSPORTATION
AND ARE BASED ON GPS OBSERVATIONS
TO CONTROL POINTS AS SUPPLIED BY
LINCOLN COUNTY.

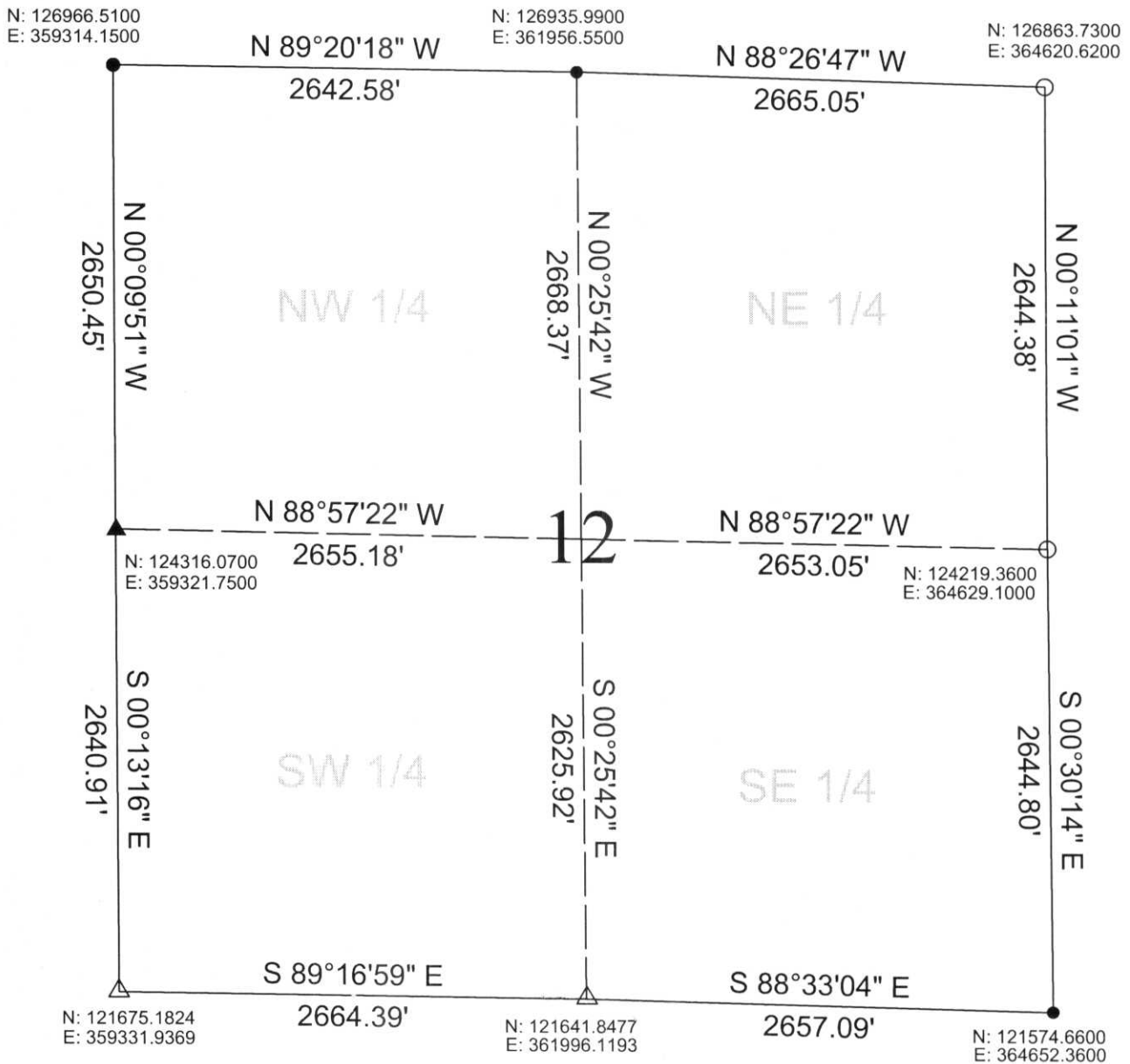
CERTIFIED CORRECT

Ronald Jacobson RLS 2059-008

Registered Land Surveyor

DATE: June 9, 2006

NOT TO SCALE
BEARINGS REFERENCED
TO LINCOLN COUNTY
CORDINATE SYSTEM



LEGEND

- ▲ FOUND MAG NAIL
- △ SET SURVEY NAIL
- FOUND SPIKE NAIL
- CALCULATED PER COORDINATES
GIVEN BY LINCOLN COUNTY SURVEYOR

DRAFTED BY: Seubert
DATE: June 9, 2006

Central Wisconsin Engineers & Architects
5707 Schofield Ave.
Weston, Wisconsin 54476
(715) 359-3400

E: I - 21:25