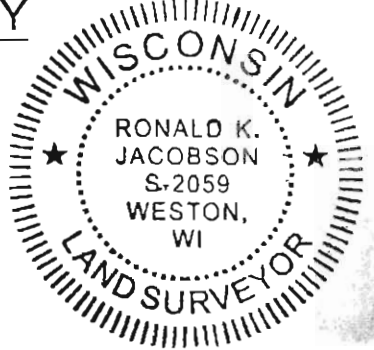
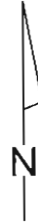


LINCOLN COUNTY U.S. PUBLIC LAND
SECTION SUMMARY

SECTION 11
 TOWNSHIP 31N
 RANGE 5 E



CORNING
 CITY, VILLAGE, TOWN

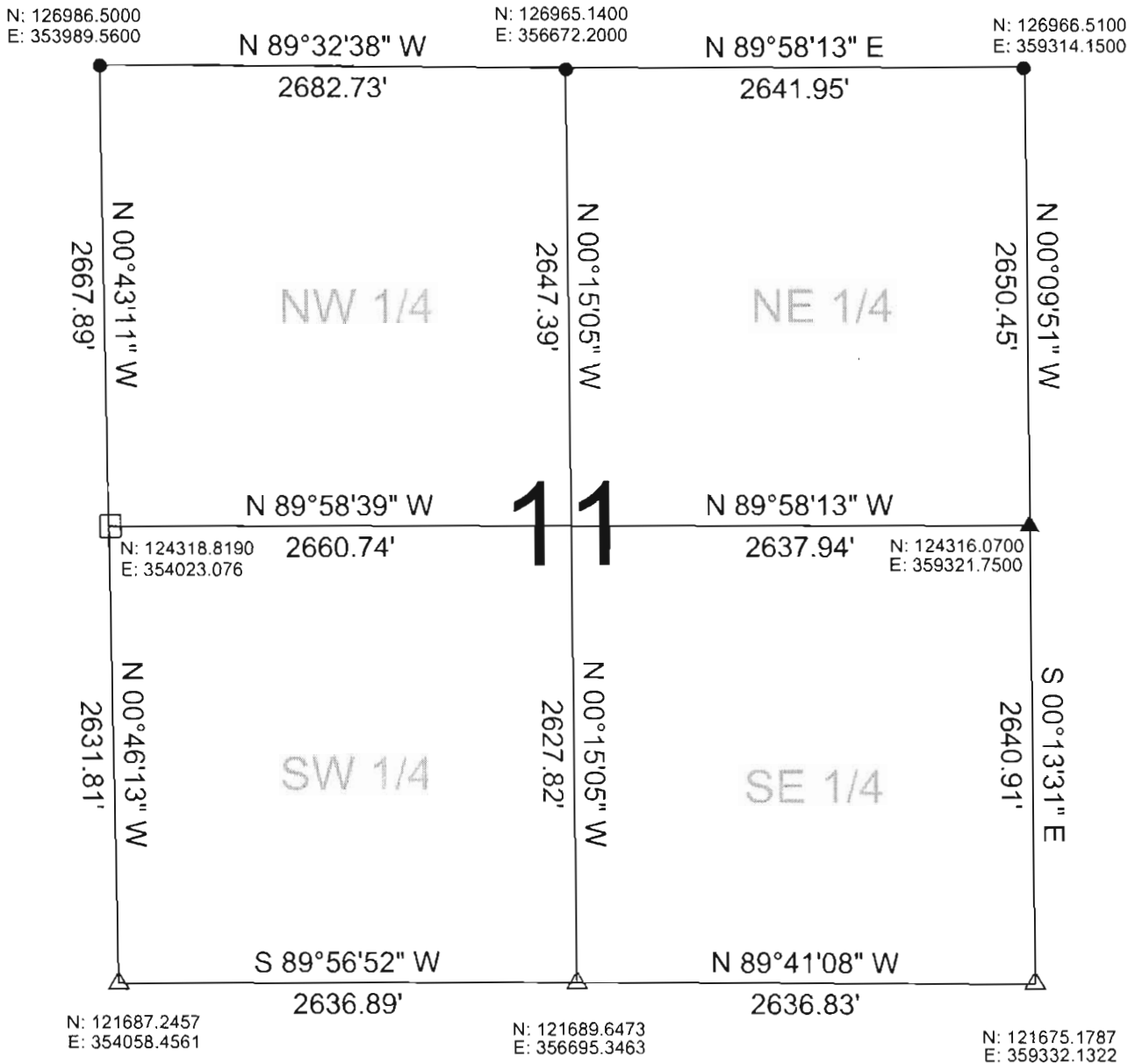


NOT TO SCALE
 BEARINGS REFERENCED
 TO LINCOLN COUNTY
 COORDINATE SYSTEM

COORDINATES ARE REFERENCED
 TO LINCOLN COUNTY COORDINATE
 SYSTEM AS DEVELOPED BY THE WI.
 DEPARTMENT OF TRANSPORTATION
 AND ARE BASED ON GPS OBSERVATIONS
 TO CONTROL POINTS AS SUPPLIED BY
 LINCOLN COUNTY.

CERTIFIED CORRECT:

Ronald Jacobson
 Ronald Jacobson RLS 2059-008
 Registered Land Surveyor
 DATE: August 4, 2006



RECEIVED BY LINCOLN COUNTY

LEGEND

- ▲ FOUND MAG NAIL
- △ SET SURVEY NAIL
- CALCULATED PER COORDINATES
GIVEN BY LINCOLN COUNTY SURVEYOR
- FOUND STONE MONUMENT

SURVEYOR THIS 7TH DAY
 OF August 20, 06
Tony Dall
 COUNTY SURVEYOR

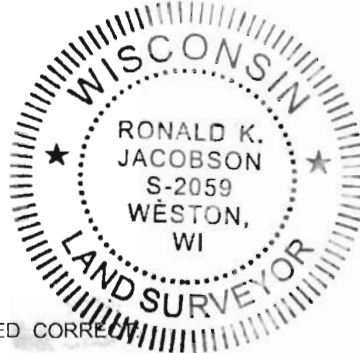
DRAFTED BY: Seubert
 DATE: August 4, 2006

Central Wisconsin Engineers & Architects
 5707 Schofield Ave.
 Weston, Wisconsin 54476
 (715) 359-3400

LINCOLN COUNTY U.S. PUBLIC LAND SECTION SUMMARY

SECTION 11
TOWNSHIP 31N
RANGE 5E

CORNING
CITY, VILLAGE, TOWN



CERTIFIED CORRECTION

Ronald K. Jacobson

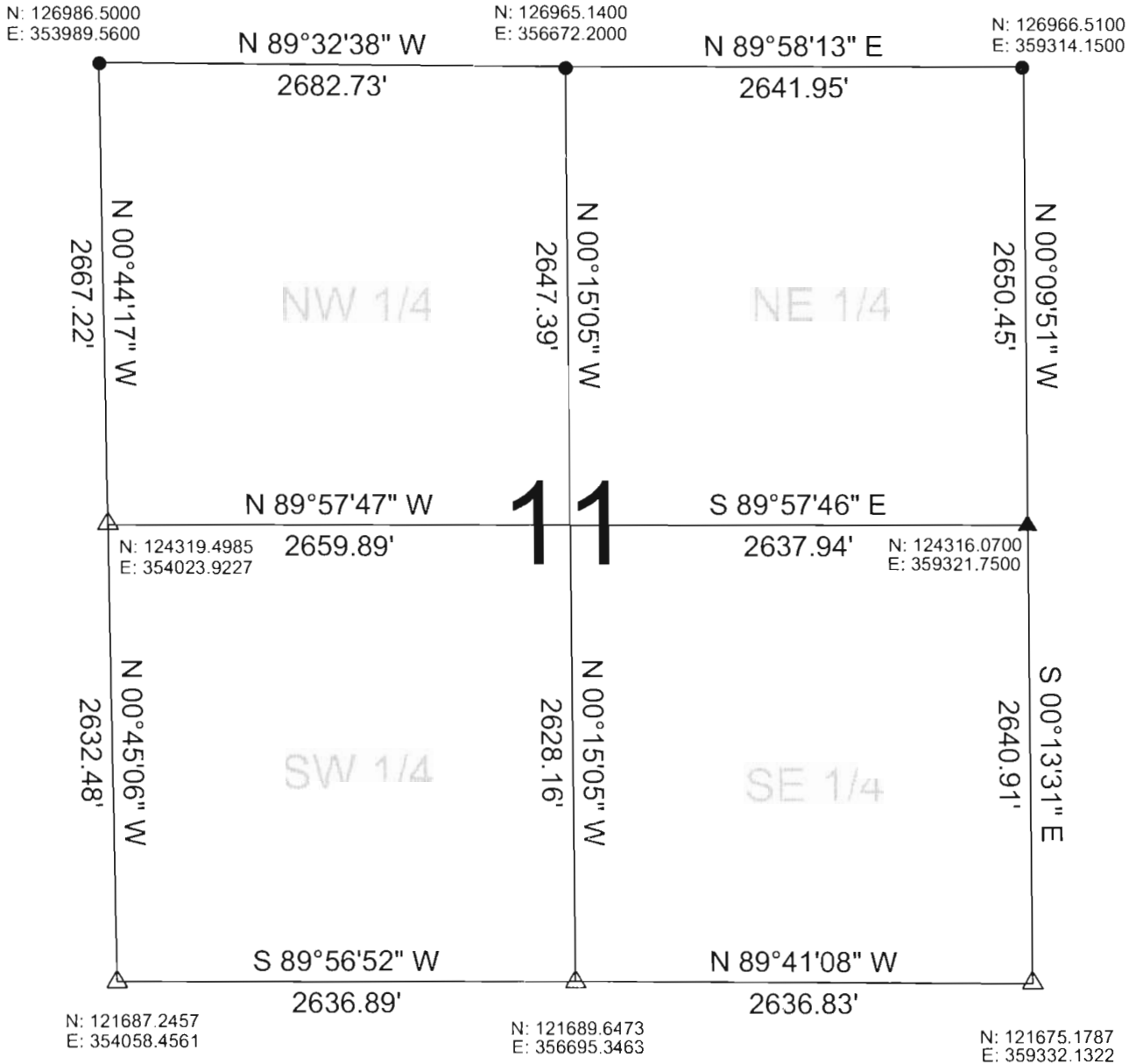
Ronald Jacobson RLS 2059-008
Registered Land Surveyor

DATE: June 23, 2006



NOT TO SCALE
BEARINGS REFERENCED
TO LINCOLN COUNTY
CORDINATE SYSTEM

COORDINATES ARE REFERENCED
TO LINCOLN COUNTY COORDINATE
SYSTEM AS DEVELOPED BY THE WI.
DEPARTMENT OF TRANSPORTATION
AND ARE BASED ON GPS OBSERVATIONS
TO CONTROL POINTS AS SUPPLIED BY
LINCOLN COUNTY.



RECEIVED BY LINCOLN COUNTY

SURVEYOR THIS 30TH DAY

OF June 20 06

Tommy Dalk
COUNTY SURVEYOR

DRAFTED BY: Seubert
DATE: June 23, 2006

Central Wisconsin Engineers & Architects
5707 Schofield Ave.
Weston, Wisconsin 54476
(715) 359-3400

LEGEND

- ▲ FOUND MAG NAIL
- △ SET SURVEY NAIL
- CALCULATED PER COORDINATES
GIVEN BY LINCOLN COUNTY SURVEYOR

E: I - 17.21