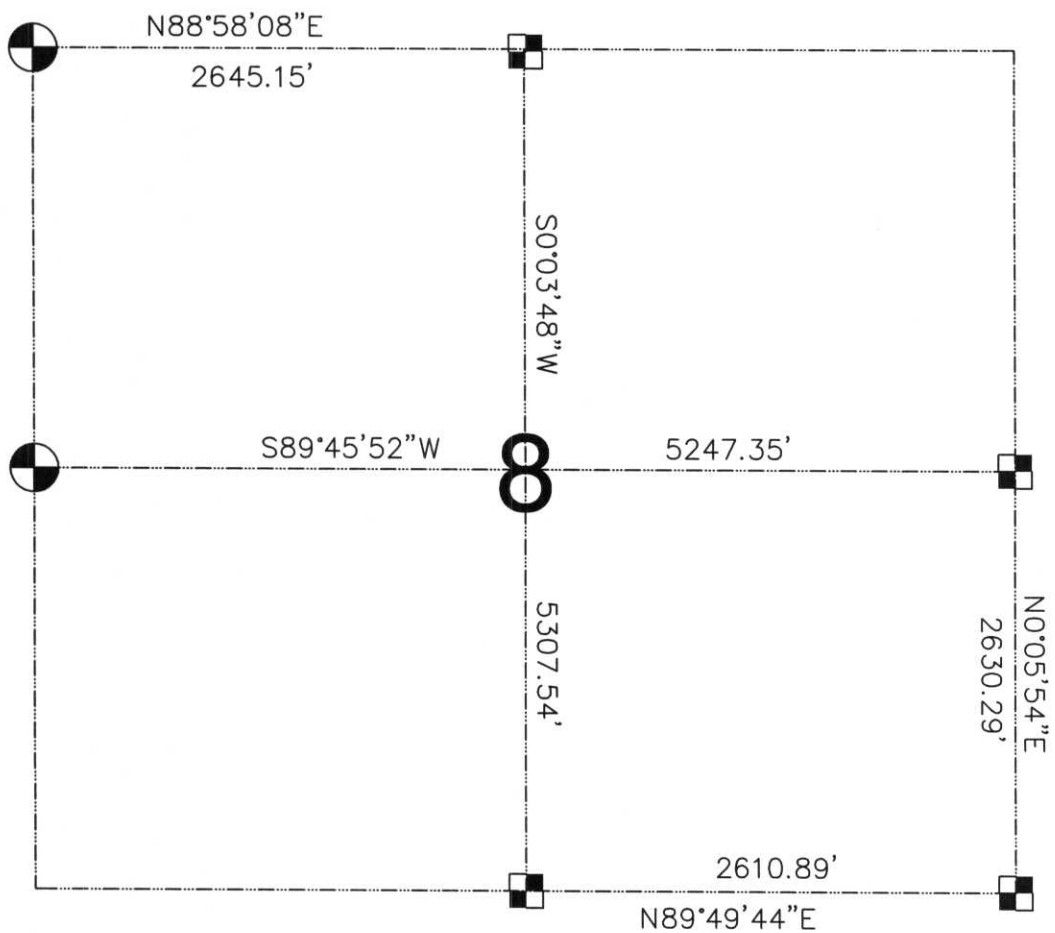


SECTION SUMMARY

SECTION 8, T31 N, R5 E, TOWN OF CORNING



ALL CORNERS WERE EITHER LOCATED WITH GPS OR ANGLES DOUBLED, DISTANCES SHOT BOTH WAYS WITH 1 SECOND TEODOLITE.

▣ FOUND GRANITE STONE MONUMENT

⊗ PULLED TIES, SET PK NAIL.

NORTHWOODS SURVEYING
 623 JEFFERSON STREET
 WAUSAU, WI. 54403
 715-845-1249



RECEIVED AT LINCOLN COUNTY
 COURTHOUSE THIS 14TH DAY
 OF November 20 02
Tony Daulton
 LAND INFORMATION OFFICE

E: I - 5:19