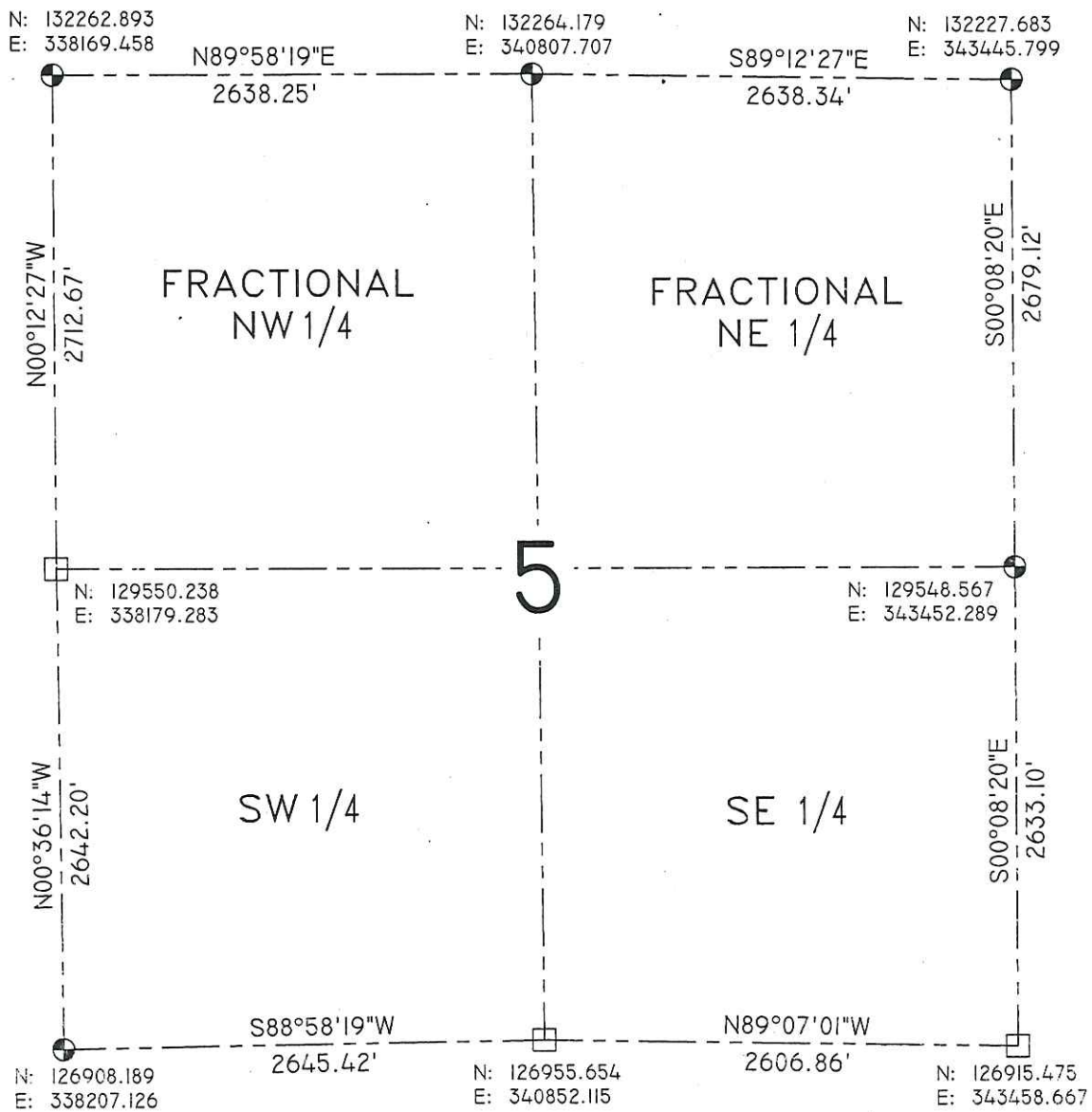


SECTION SUMMARY  
 5 - 31 - 5  
 Section Township Range  
**CORNING**  
 Town



COORDINATES ARE REFERENCED TO THE LINCOLN COUNTY COORDINATE SYSTEM NAD 83(2007) AND REFERENCED TO THE NORTH LINE OF THE FRACTIONAL NORTHEAST 1/4 OF SECTION 5, TOWNSHIP 31 NORTH, RANGE 5 EAST, MEASURED TO BEAR SOUTH 89°12'27" EAST.

**LEGEND**

- - Lincoln County Monument (Berntsen)
- - Stone Monument

RECEIVED BY LINCOLN COUNTY SURVEYOR THIS 28<sup>TH</sup> DAY OF February 20 13  
*Tommy Dahl*  
 COUNTY SURVEYOR



CERTIFIED CORRECT:  
 \_\_\_\_\_  
 Registered Land Surveyor  
 DATE: 2-27-2013

R.E.I. 4080 N. 20th AVE WAUSAU, WI 54401 (715)675-9784

Sec. 5

# LINCOLN COUNTY U.S. PUBLIC LAND

## SECTION SUMMARY

SECTION 5  
 TOWNSHIP 31N  
 RANGE 5 E

CORNING  
 CITY, VILLAGE, TOWN



CERTIFIED CORRECT

*[Signature]*

Ronald Jacobson RLS 2059-008

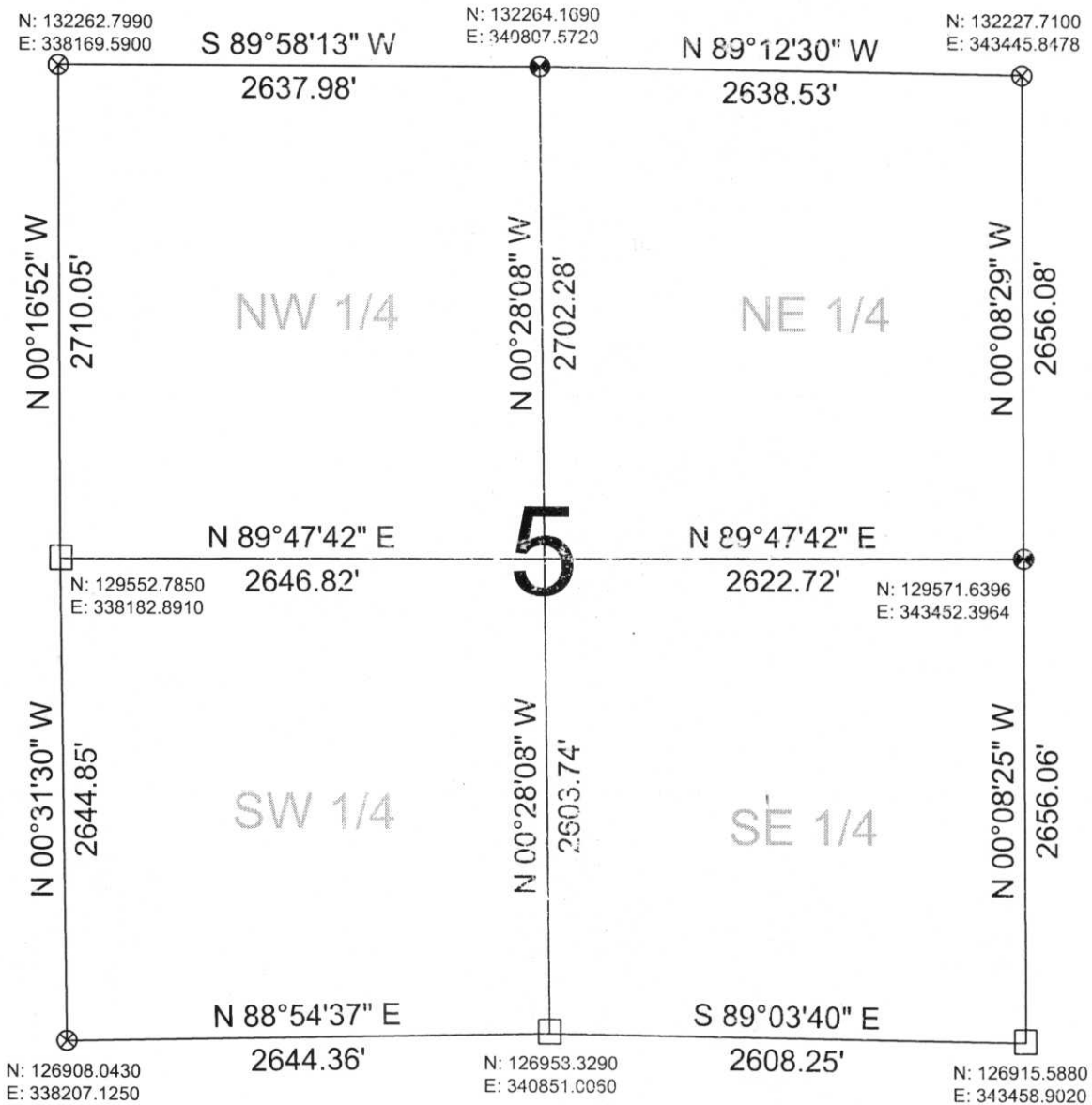
Registered Land Surveyor

DATE: August 4, 2006



NOT TO SCALE  
 BEARINGS REFERENCED  
 TO LINCOLN COUNTY  
 COORDINATE SYSTEM

COORDINATES ARE REFERENCED  
 TO LINCOLN COUNTY COORDINATE  
 SYSTEM AS DEVELOPED BY THE WI.  
 DEPARTMENT OF TRANSPORTATION  
 AND ARE BASED ON GPS OBSERVATIONS  
 TO CONTROL POINTS AS SUPPLIED BY  
 LINCOLN COUNTY.



**LEGEND**

- FOUND STONE MONUMENT
- ⊗ SET LINCOLN COUNTY BERNSTEN MOMUMENT
- ⊗ FOUND LINCOLN COUNTY BERNSTEN MOMUMENT

RECEIVED BY LINCOLN COUNTY  
 SURVEYOR THIS 7<sup>TH</sup> DAY  
 OF August 20 06  
*[Signature]*  
 COUNTY SURVEYOR

DRAFTED BY: Seubert  
 DATE: August 4, 2006

Central Wisconsin Engineers & Architects  
 5707 Schofield Ave.  
 Weston, Wisconsin 54476  
 (715) 359-3400