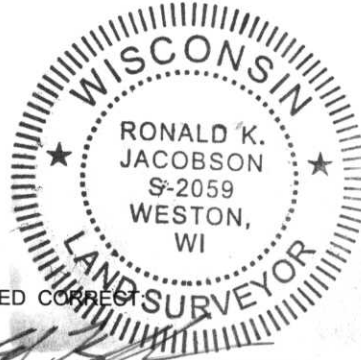


LINCOLN COUNTY U.S. PUBLIC LAND SECTION SUMMARY

SECTION 36
TOWNSHIP 31N
RANGE 4 E

CORNING
CITY, VILLAGE, TOWN



CERTIFIED CORRECT

Ronald Jacobson RLS 2059-008

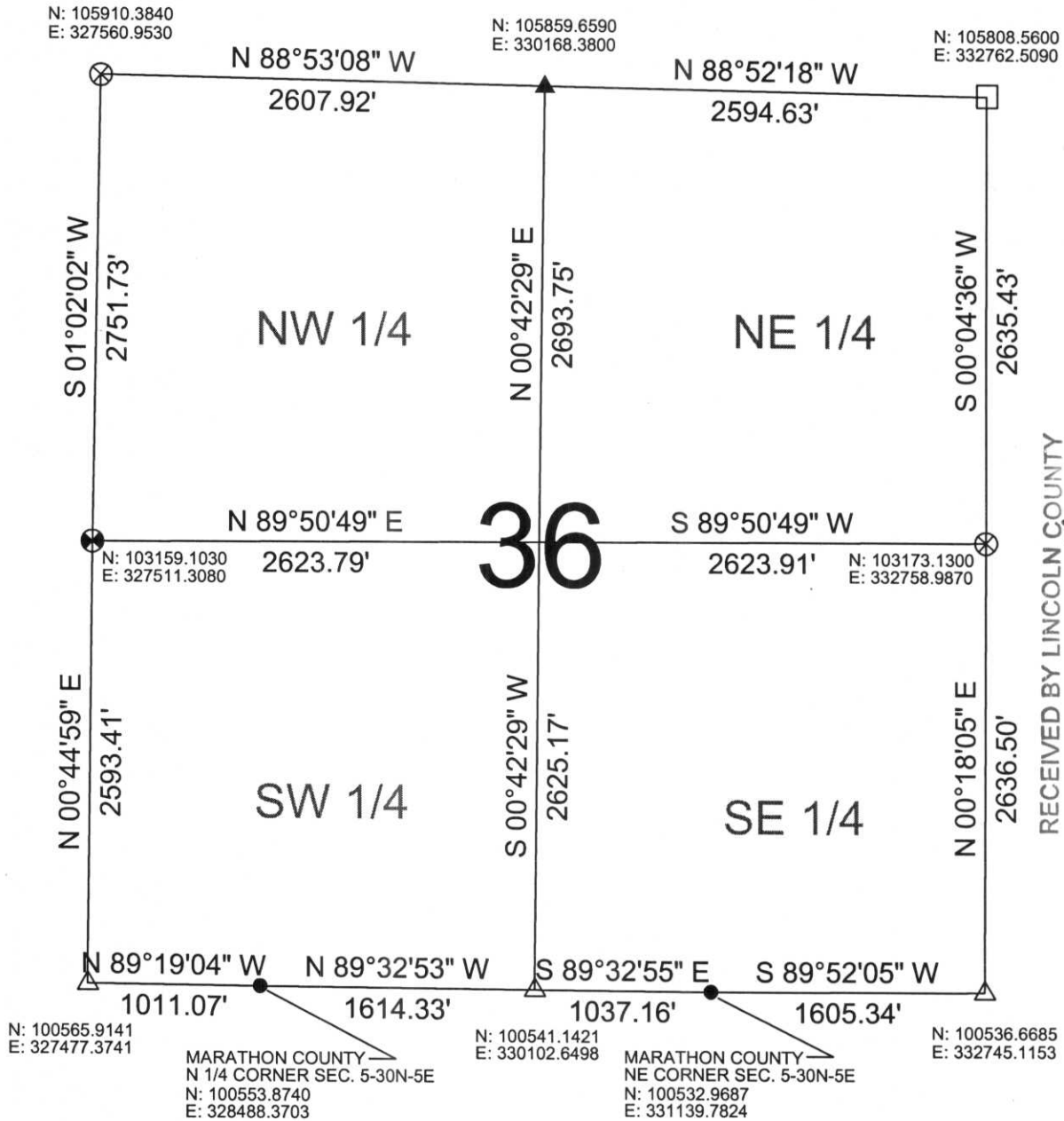
Registered Land Surveyor

DATE: October 18, 2006



NOT TO SCALE
BEARINGS REFERENCED
TO LINCOLN COUNTY
COORDINATE SYSTEM

COORDINATES ARE REFERENCED
TO LINCOLN COUNTY COORDINATE
SYSTEM AS DEVELOPED BY THE WI.
DEPARTMENT OF TRANSPORTATION
AND ARE BASED ON GPS OBSERVATIONS
TO CONTROL POINTS AS SUPPLIED BY
LINCOLN COUNTY.



RECEIVED BY LINCOLN COUNTY
SURVEYOR THIS 23RD DAY
OF October 20 06
Ronald Jacobson
COUNTY SURVEYOR

LEGEND

- FOUND STONE MONUMENT
 - ⊗ FOUND LINCOLN COUNTY BERNSTEN MOMUMENT
 - ⊙ SET LINCOLN COUNTY BERNSTEN MOMUMENT
 - ▲ FOUND MAG NAIL
 - △ SET SURVEY NAIL
 - CALCULATED PER TIE SHEET ON RECORD
- DRAFTED BY: Lee
DATE: October 13, 2006

Central Wisconsin Engineers & Architects
5707 Schofield Ave.
Weston, Wisconsin 54476
(715) 359-9400