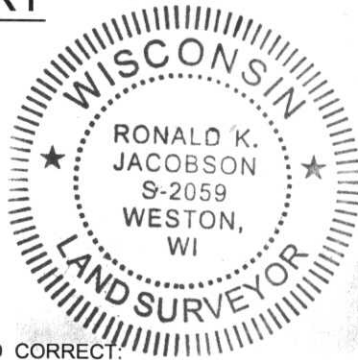


# LINCOLN COUNTY U.S. PUBLIC LAND SECTION SUMMARY

SECTION 35  
TOWNSHIP 31N  
RANGE 4 E

CORNING  
CITY, VILLAGE, TOWN



CERTIFIED CORRECT:

*[Signature]*

Ronald Jacobson RLS 2059-008

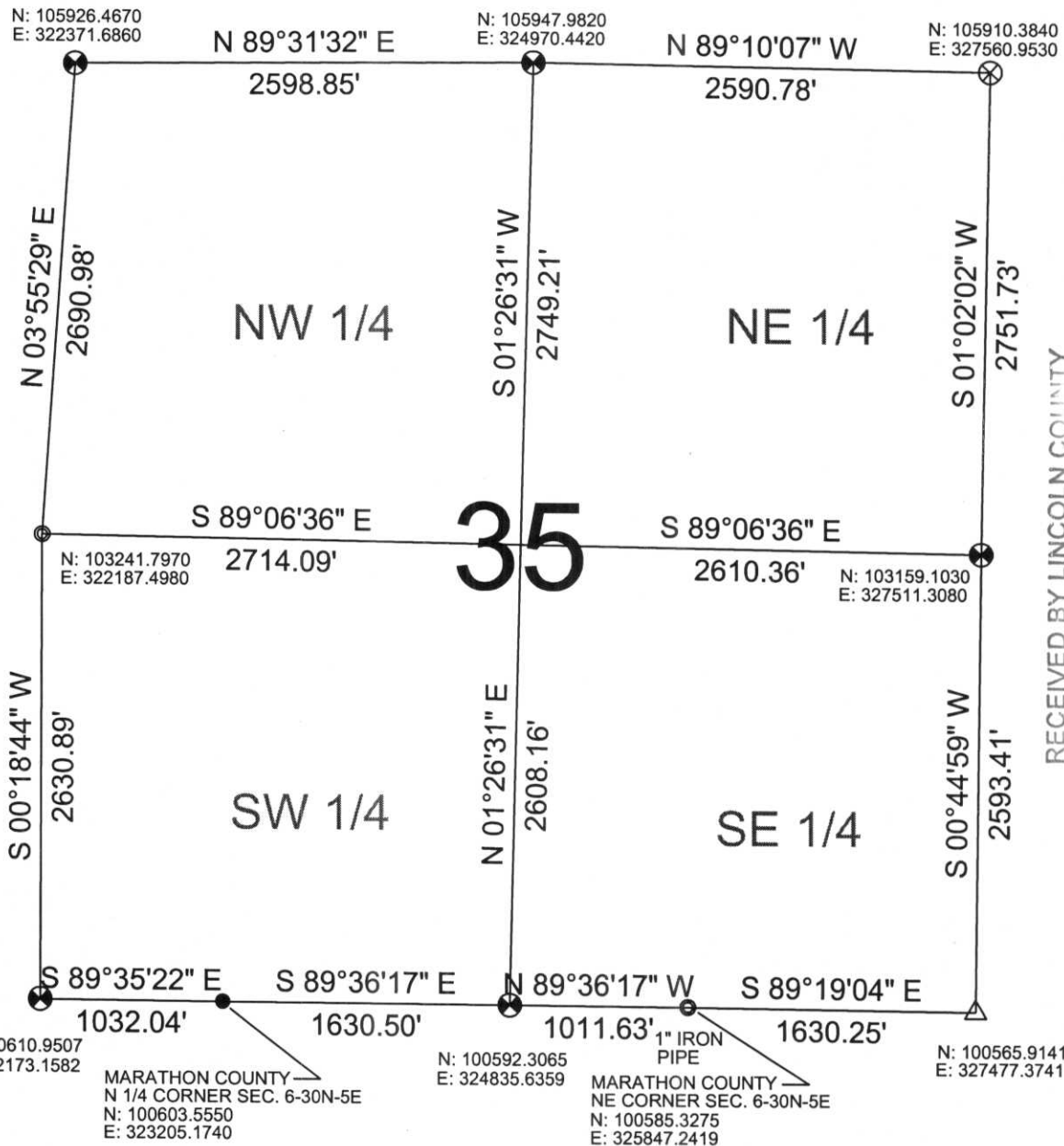
Registered Land Surveyor

DATE: October 16, 2006



NOT TO SCALE  
BEARINGS REFERENCED  
TO LINCOLN COUNTY  
COORDINATE SYSTEM

COORDINATES ARE REFERENCED  
TO LINCOLN COUNTY COORDINATE  
SYSTEM AS DEVELOPED BY THE WI.  
DEPARTMENT OF TRANSPORTATION  
AND ARE BASED ON GPS OBSERVATIONS  
TO CONTROL POINTS AS SUPPLIED BY  
LINCOLN COUNTY.



RECEIVED BY LINCOLN COUNTY  
SURVEYOR THIS 23<sup>RD</sup> DAY  
OF October 20 06  
*[Signature]*  
COUNTY SURVEYOR

### LEGEND

- FOUND STONE MONUMENT
- ⊗ FOUND LINCOLN COUNTY BERNSTEN MOMUMENT
- FOUND 1.5" IRON PIPE
- CALCULATED PER TIE SHEET ON RECORD
- ⊗ SET LINCOLN COUNTY BERNSTEN MOMUMENT
- △ SET SURVEY NAIL

DRAFTED BY: Lee  
DATE: October 13, 2006

Central Wisconsin Engineers & Architects  
5707 Schofield Ave.  
Weston, Wisconsin 54476  
(715) 359-9400