

LINCOLN COUNTY U.S. PUBLIC LAND SECTION SUMMARY

SECTION 34
TOWNSHIP 31N
RANGE 4 E

CORNING
CITY, VILLAGE, TOWN



CERTIFIED CORRECT

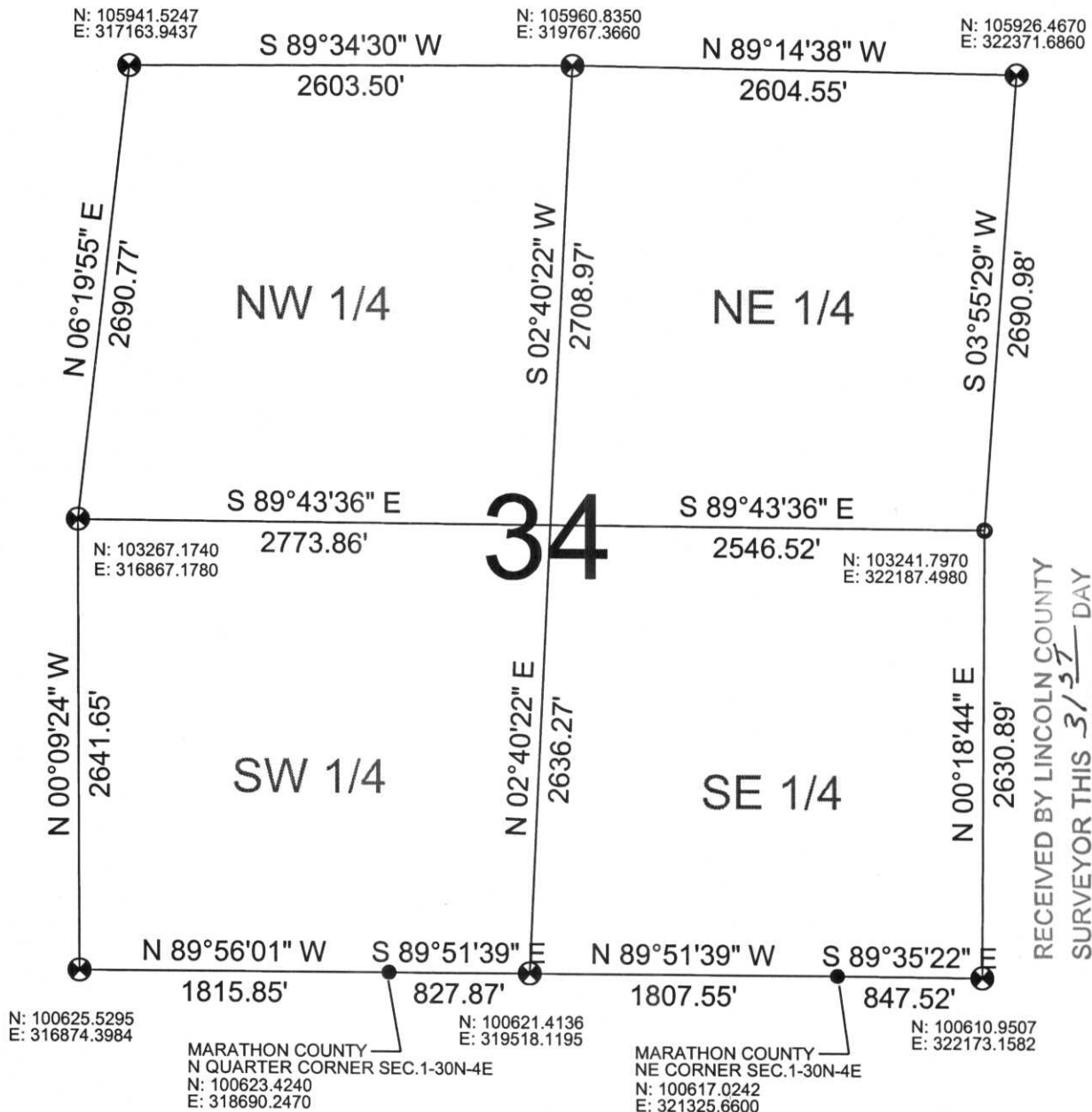
Ronald Jacobson RLS 2059-008
Registered Land Surveyor

DATE: October 27, 2006



NOT TO SCALE
BEARINGS REFERENCED
TO LINCOLN COUNTY
COORDINATE SYSTEM

COORDINATES ARE REFERENCED
TO LINCOLN COUNTY COORDINATE
SYSTEM AS DEVELOPED BY THE WI.
DEPARTMENT OF TRANSPORTATION
AND ARE BASED ON GPS OBSERVATIONS
TO CONTROL POINTS AS SUPPLIED BY
LINCOLN COUNTY.



RECEIVED BY LINCOLN COUNTY
SURVEYOR THIS 31ST DAY
OF October 2006
Randy Dahl
COUNTY SURVEYOR

LEGEND

- FOUND STONE MONUMENT
- CALCULATED PER TIE SHEET ON RECORD
- ⊗ SET LINCOLN COUNTY BERNSTEN MOMUMENT
- ⊙ FOUND 1 1/2" IRON PIPE
- ⊗ FOUND LINCOLN COUNTY BERNSTEN MOMUMENT
- ⊙ FOUND RAILROAD SPIKE

DRAFTED BY: Lee
DATE: October 26, 2006

Central Wisconsin Engineers & Architects
5707 Schofield Ave.
Weston, Wisconsin 54476
(715) 359-9400