

LINCOLN COUNTY U.S. PUBLIC LAND SECTION SUMMARY

SECTION 33
TOWNSHIP 31N
RANGE 4 E

CORNING
CITY, VILLAGE, TOWN



CERTIFIED CORRECT

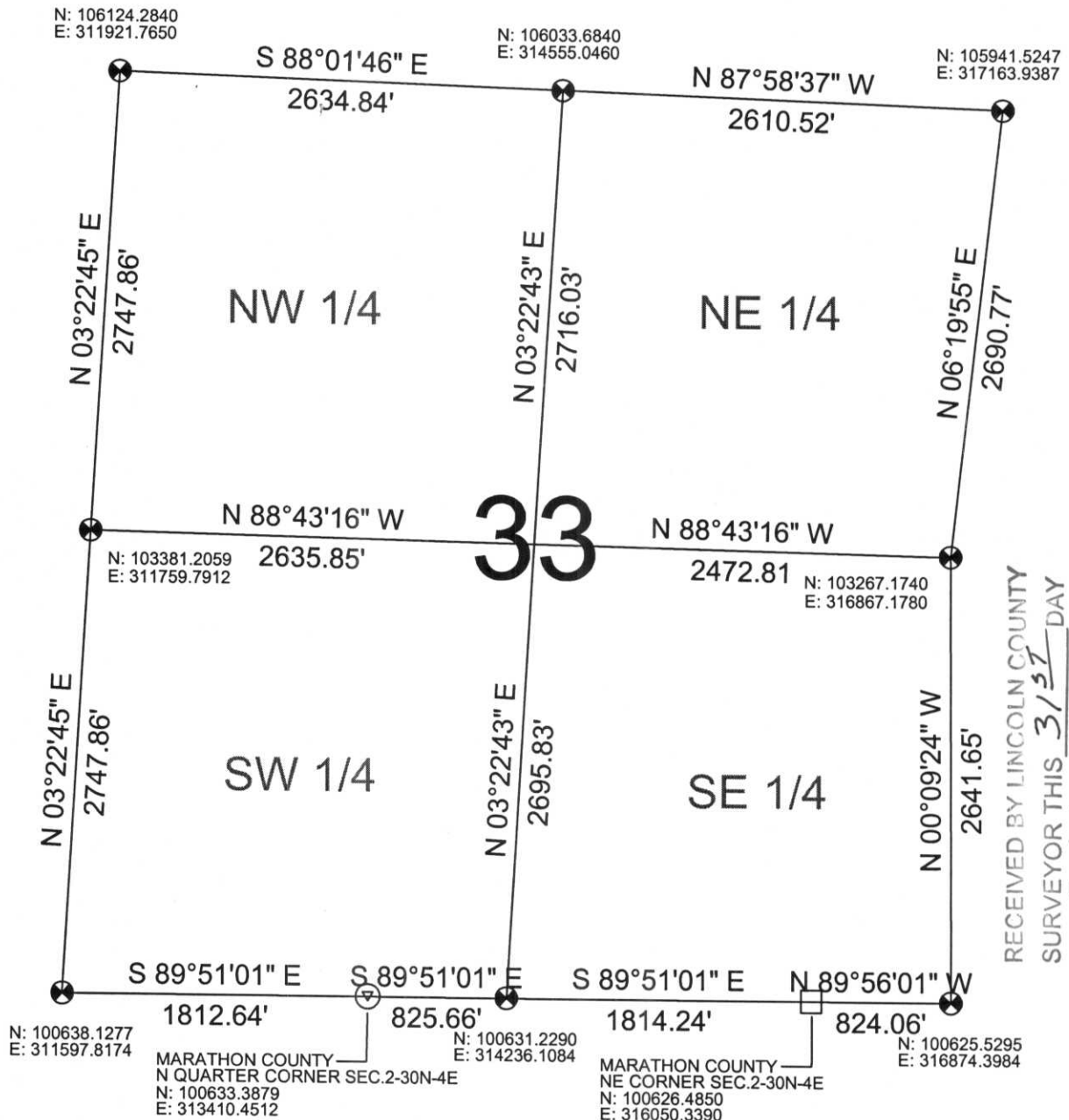
Ronald Jacobson
Ronald Jacobson RLS 2059-008
Registered Land Surveyor

DATE: October 27, 2006



NOT TO SCALE
BEARINGS REFERENCED
TO LINCOLN COUNTY
COORDINATE SYSTEM

COORDINATES ARE REFERENCED
TO LINCOLN COUNTY COORDINATE
SYSTEM AS DEVELOPED BY THE WI.
DEPARTMENT OF TRANSPORTATION
AND ARE BASED ON GPS OBSERVATIONS
TO CONTROL POINTS AS SUPPLIED BY
LINCOLN COUNTY.



LEGEND

- FOUND STONE MONUMENT
- ⊙ SET 1" IRON ROD
- ⊗ SET LINCOLN COUNTY BERNSTEN MOMUMENT
- ⊗ FOUND LINCOLN COUNTY BERNSTEN MOMUMENT

DRAFTED BY: Lee
DATE: October 26, 2006

Central Wisconsin Engineers & Architects
5707 Schofield Ave.
Weston, Wisconsin 54476
(715) 359-9400