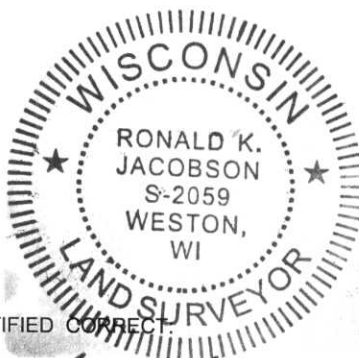


# LINCOLN COUNTY U.S. PUBLIC LAND SECTION SUMMARY

SECTION 32  
TOWNSHIP 31N  
RANGE 4 E

CORNING  
CITY, VILLAGE, TOWN



NOT TO SCALE  
BEARINGS REFERENCED  
TO LINCOLN COUNTY  
COORDINATE SYSTEM

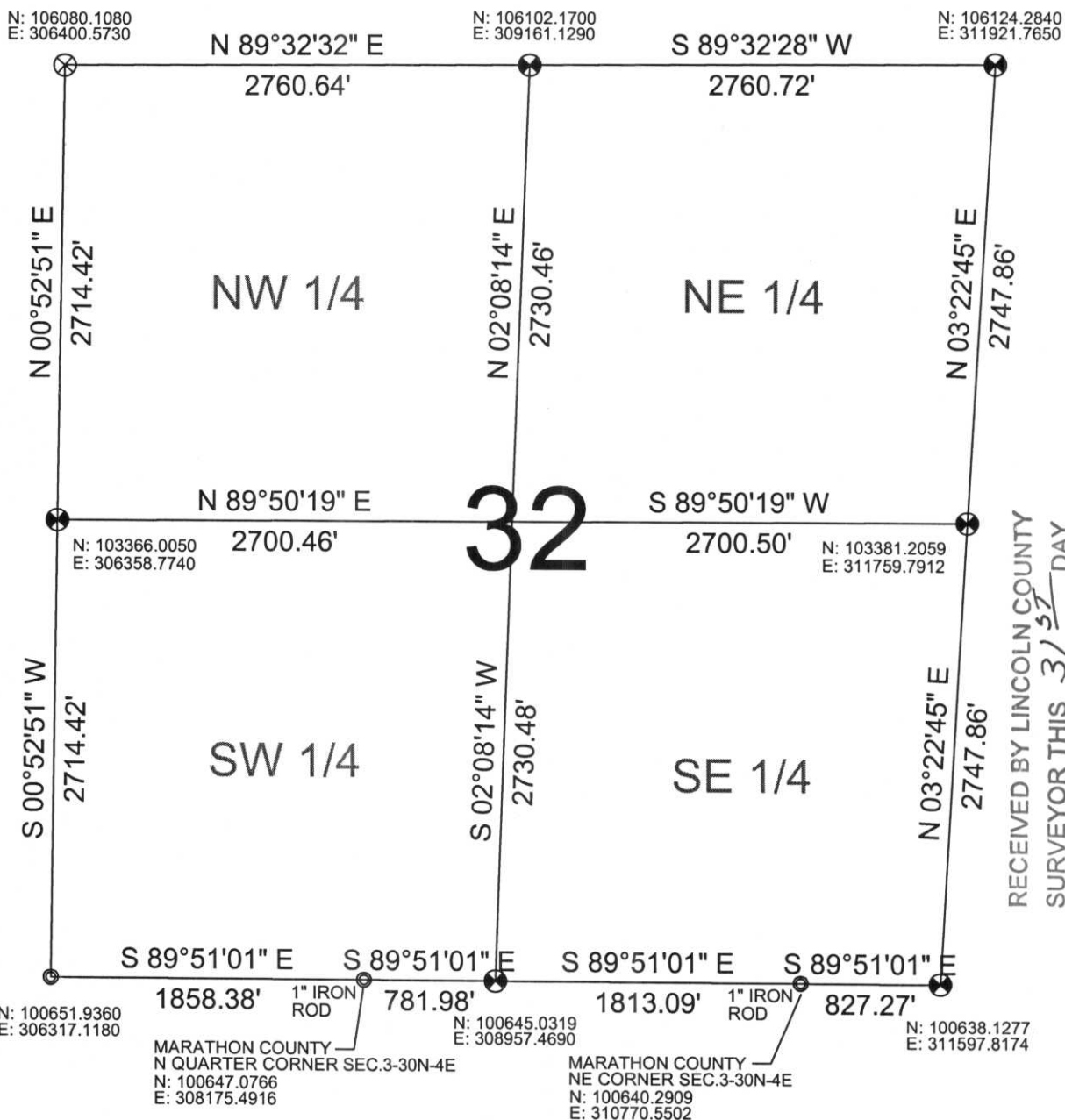
COORDINATES ARE REFERENCED  
TO LINCOLN COUNTY COORDINATE  
SYSTEM AS DEVELOPED BY THE WI.  
DEPARTMENT OF TRANSPORTATION  
AND ARE BASED ON GPS OBSERVATIONS  
TO CONTROL POINTS AS SUPPLIED BY  
LINCOLN COUNTY.

CERTIFIED CORRECT

Ronald Jacobson RLS 2059-008

Registered Land Surveyor

DATE: October 27, 2006



RECEIVED BY LINCOLN COUNTY  
SURVEYOR THIS 31<sup>ST</sup> DAY  
OF October 20 06  
*Tony Dahl*  
COUNTY SURVEYOR

### LEGEND

- FOUND STONE MONUMENT
- ⊗ FOUND LINCOLN COUNTY BERNSTEN MOMUMENT
- ⊙ FOUND 1" IRON PIPE
- ⊗ SET LINCOLN COUNTY BERNSTEN MOMUMENT

DRAFTED BY: Lee  
DATE: October 26, 2006

Central Wisconsin Engineers & Architects  
5707 Schofield Ave.  
Weston, Wisconsin 54476  
(715) 359-9400