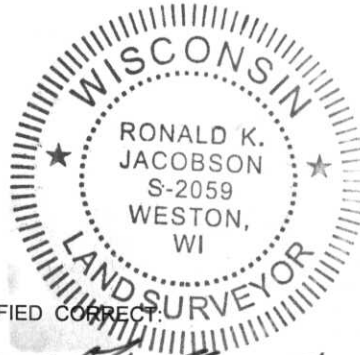


LINCOLN COUNTY U.S. PUBLIC LAND SECTION SUMMARY

SECTION 31
TOWNSHIP 31N
RANGE 4 E

CORNING
CITY, VILLAGE, TOWN



CERTIFIED CORRECT:

Ronald Jacobson
Ronald Jacobson RLS 2059-008

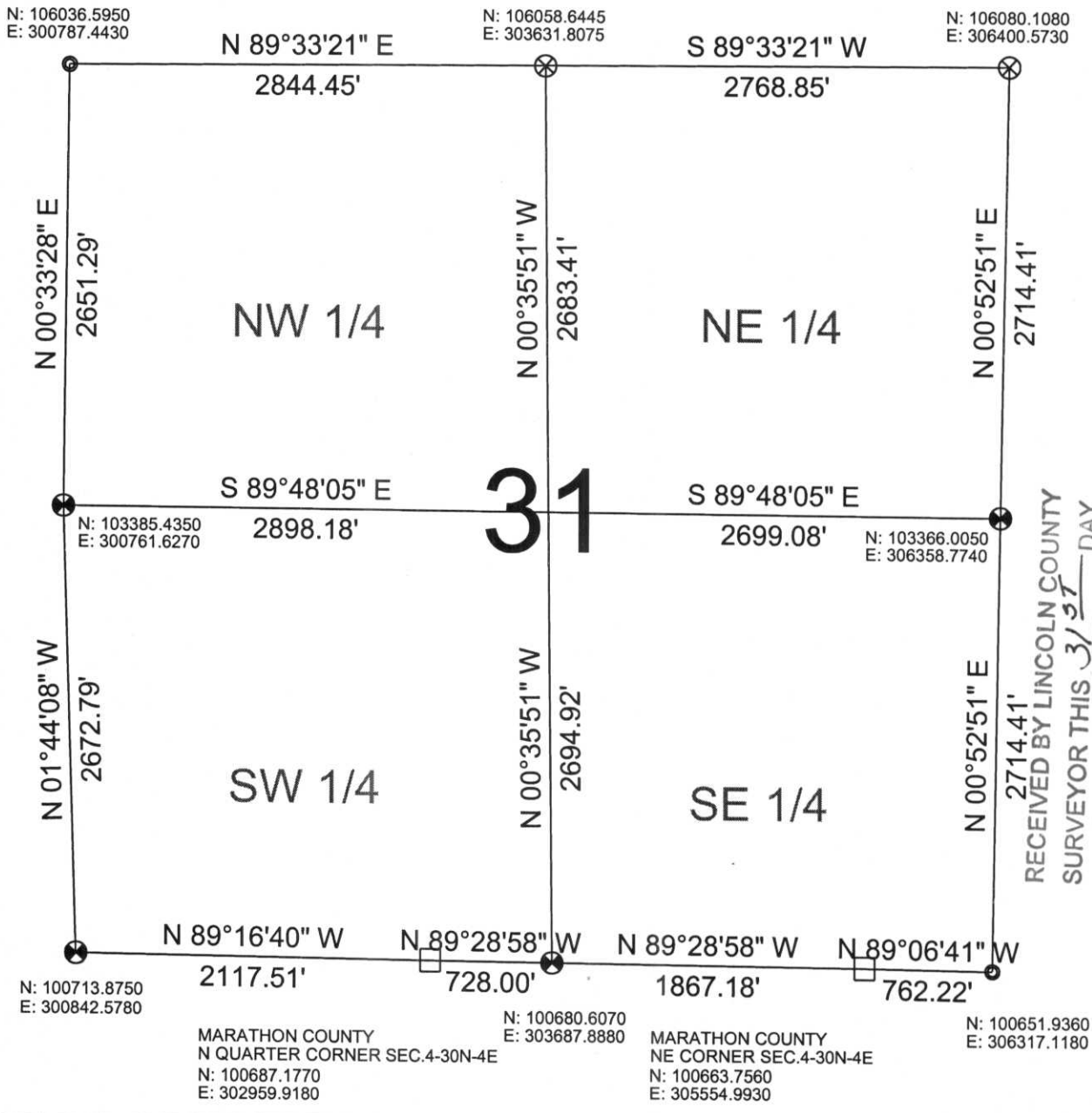
Registered Land Surveyor

DATE: October 27, 2006

COORDINATES ARE REFERENCED TO LINCOLN COUNTY COORDINATE SYSTEM AS DEVELOPED BY THE WI. DEPARTMENT OF TRANSPORTATION AND ARE BASED ON GPS OBSERVATIONS TO CONTROL POINTS AS SUPPLIED BY LINCOLN COUNTY.



NOT TO SCALE
BEARINGS REFERENCED TO LINCOLN COUNTY COORDINATE SYSTEM



RECEIVED BY LINCOLN COUNTY
SURVEYOR THIS 31ST DAY
OF October 20 06
Ronald Jacobson
COUNTY SURVEYOR

LEGEND

- FOUND STONE MONUMENT
- FOUND 2" IRON PIPE
- ⊗ SET LINCOLN COUNTY BERNSTEN MOMUMENT
- ⊗ FOUND LINCOLN COUNTY BERNSTEN MOMUMENT

DRAFTED BY: Lee
DATE: October 26, 2006

Central Wisconsin Engineers & Architects
5707 Schofield Ave.
Weston, Wisconsin 54476
(715) 359-9400