

# LINCOLN COUNTY U.S. PUBLIC LAND SECTION SUMMARY

SECTION 28  
TOWNSHIP 31N  
RANGE 4 E

CORNING  
CITY, VILLAGE, TOWN



CERTIFIED CORRECT

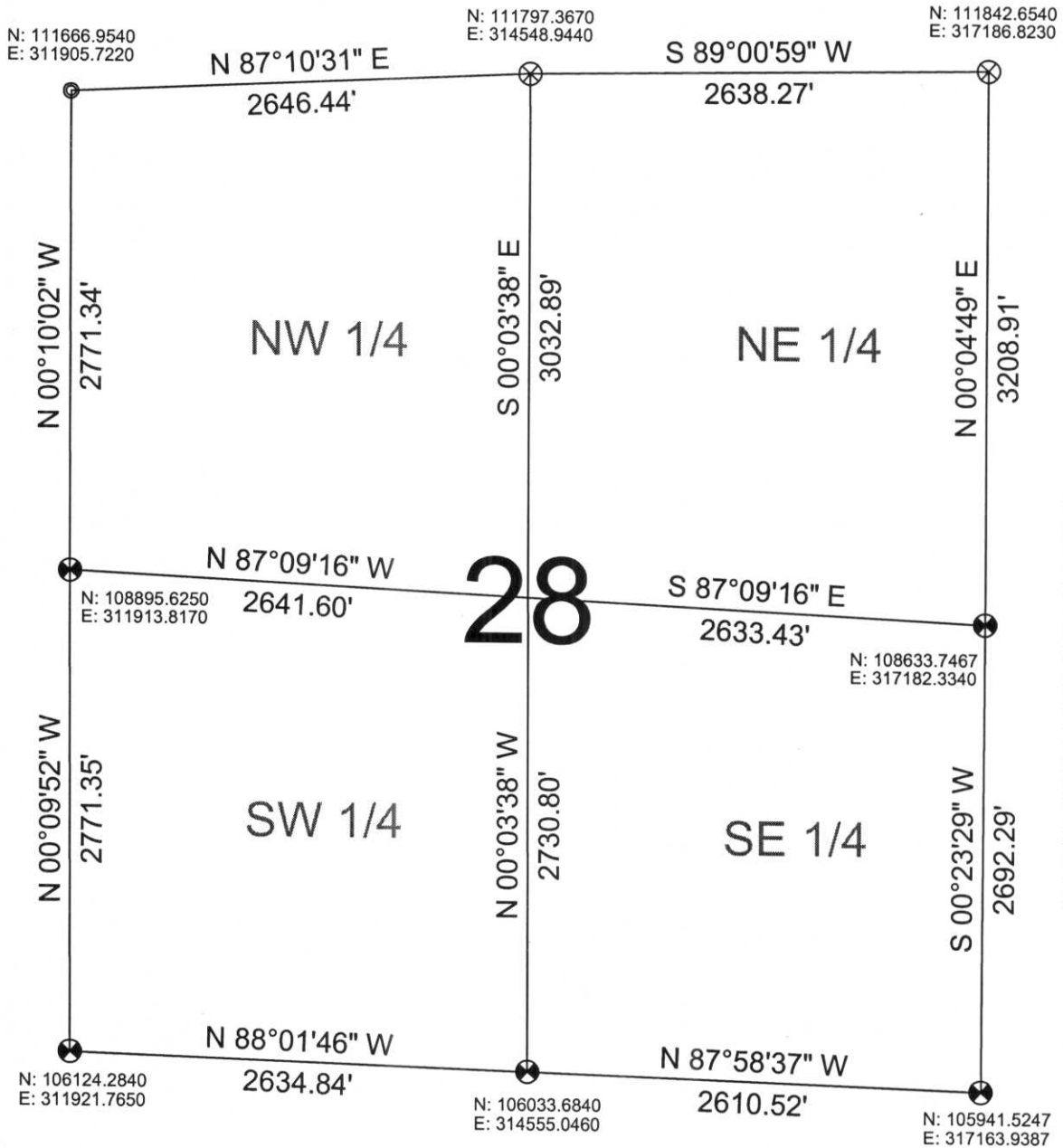
Ronald Jacobson RLS 2059-008  
Registered Land Surveyor

DATE: October 27, 2006

COORDINATES ARE REFERENCED TO LINCOLN COUNTY COORDINATE SYSTEM AS DEVELOPED BY THE WI. DEPARTMENT OF TRANSPORTATION AND ARE BASED ON GPS OBSERVATIONS TO CONTROL POINTS AS SUPPLIED BY LINCOLN COUNTY.



NOT TO SCALE  
BEARINGS REFERENCED TO LINCOLN COUNTY COORDINATE SYSTEM



RECEIVED BY LINCOLN COUNTY  
SURVEYOR THIS 31<sup>ST</sup> DAY  
OF October 20 06  
*Tony Dahl*  
COUNTY SURVEYOR

### LEGEND

- FOUND STONE MONUMENT
- ⊙ FOUND 1" IRON PIPE
- ⊗ SET LINCOLN COUNTY BERNSTEN MOMUMENT
- ⊗ FOUND LINCOLN COUNTY BERNSTEN MONUMENT

DRAFTED BY: Lee  
DATE: October 13, 2006

Central Wisconsin Engineers & Architects  
5707 Schofield Ave.  
Weston, Wisconsin 54476  
(715) 359-9400