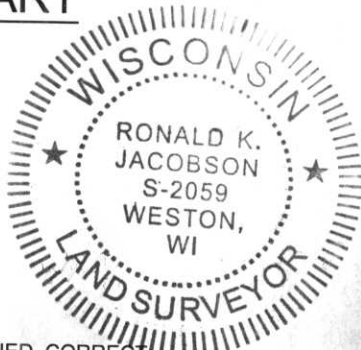


LINCOLN COUNTY U.S. PUBLIC LAND SECTION SUMMARY

SECTION 27
TOWNSHIP 31N
RANGE 4 E

CORNING
CITY, VILLAGE, TOWN

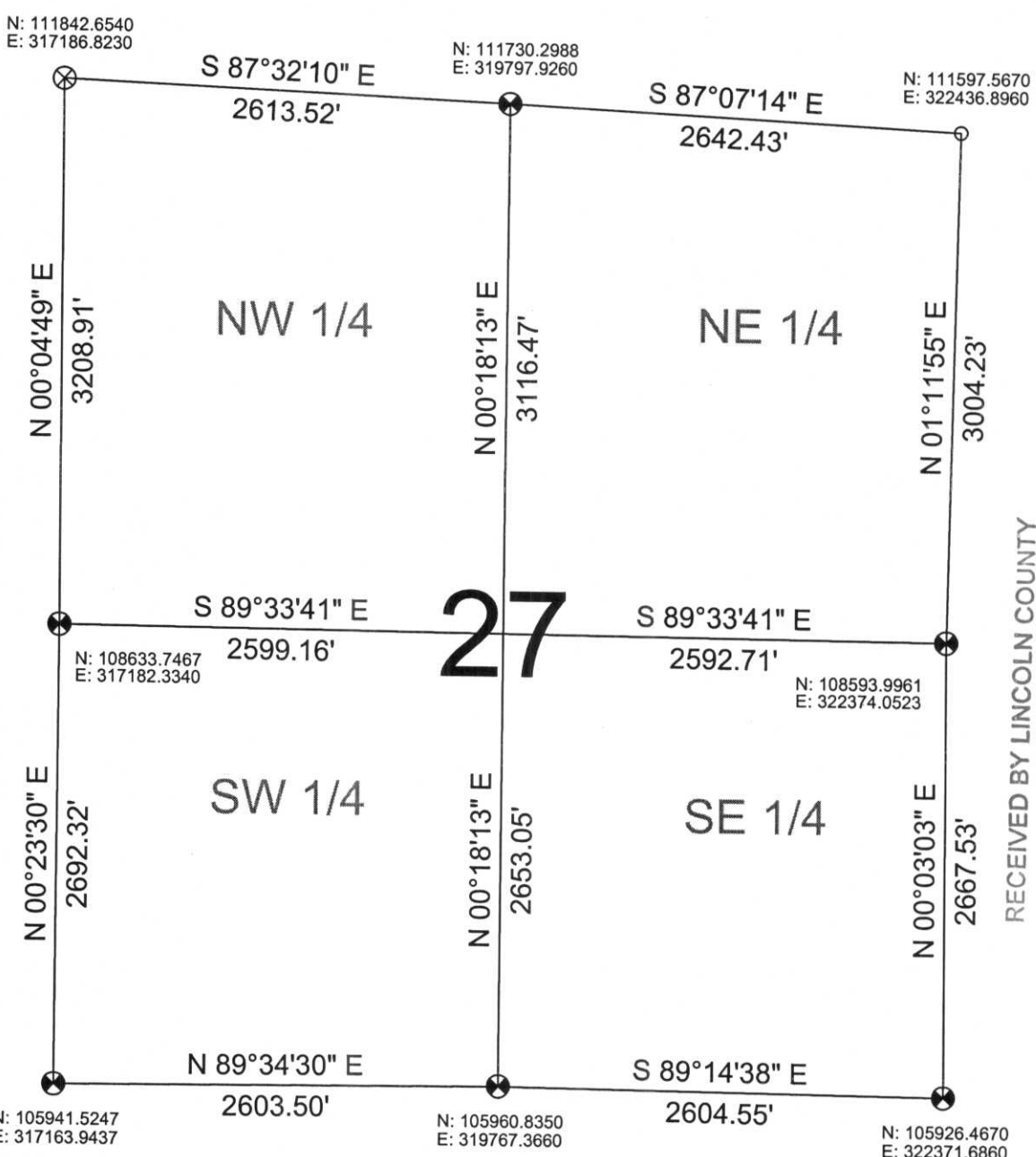


COORDINATES ARE REFERENCED TO LINCOLN COUNTY COORDINATE SYSTEM AS DEVELOPED BY THE WI. DEPARTMENT OF TRANSPORTATION AND ARE BASED ON GPS OBSERVATIONS TO CONTROL POINTS AS SUPPLIED BY LINCOLN COUNTY.

CERTIFIED CORRECT:

[Signature]
Ronald Jacobson RLS 2059-008
Registered Land Surveyor
DATE: November 3, 2006

NOT TO SCALE
BEARINGS REFERENCED TO LINCOLN COUNTY COORDINATE SYSTEM



RECEIVED BY LINCOLN COUNTY
SURVEYOR THIS 8TH DAY
OF November 20 06
[Signature]
COUNTY SURVEYOR

LEGEND

- ⊗ SET LINCOLN COUNTY BERNSTEN MOMUMENT
- ⊙ CALCULATED PER CORDINATES GIVEN BY LINCOLN COUNTY SURVEYOR
- ⊗ FOUND LINCOLN COUNTY BERNSTEN MOMUMENT

DRAFTED BY: Lee
DATE: November 3, 2006

Central Wisconsin Engineers & Architects
5707 Schofield Ave.
Weston, Wisconsin 54476
(715) 359-9400