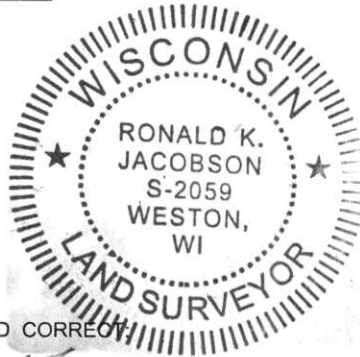


LINCOLN COUNTY U.S. PUBLIC LAND SECTION SUMMARY

SECTION 22
TOWNSHIP 31N
RANGE 4 E

CORNING
CITY, VILLAGE, TOWN



CERTIFIED CORRECT

Ronald Jacobson RLS 2059-008

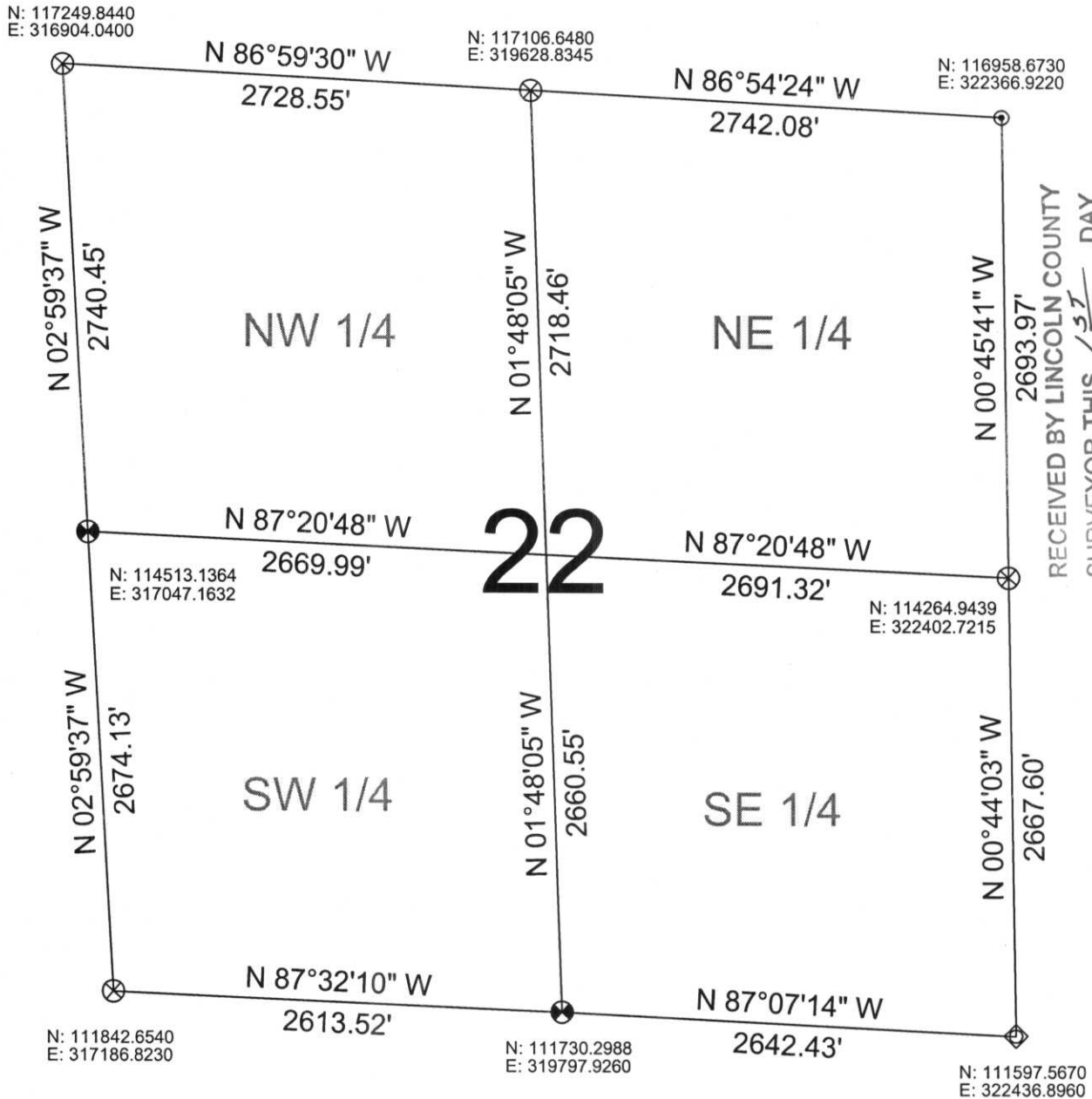
Registered Land Surveyor

DATE: November 30, 2006



NOT TO SCALE
BEARINGS REFERENCED
TO LINCOLN COUNTY
COORDINATE SYSTEM

COORDINATES ARE REFERENCED
TO LINCOLN COUNTY COORDINATE
SYSTEM AS DEVELOPED BY THE WI.
DEPARTMENT OF TRANSPORTATION
AND ARE BASED ON GPS OBSERVATIONS
TO CONTROL POINTS AS SUPPLIED BY
LINCOLN COUNTY.



RECEIVED BY LINCOLN COUNTY
SURVEYOR THIS 13TH DAY
OF December 20 06
Tony Dethlefs
COUNTY SURVEYOR

LEGEND

- FOUND 1" IRON PIPE
- ⊗ SET LINCOLN COUNTY BERNSTEN MOMUMENT
- ⊗ FOUND LINCOLN COUNTY BERNSTEN MOMUMENT
- ◇ CALCULATED PER CORDINATES GIVEN BY LINCOLN COUNTY SURVEYOR
- ⊙ FOUND RAILROAD SPIKE

DRAFTED BY: Lee
DATE: November 30, 2006

Central Wisconsin Engineers & Architects
5707 Schofield Ave.
Weston, Wisconsin 54476
(715) 359-9400