

LINCOLN COUNTY U.S. PUBLIC LAND SECTION SUMMARY

SECTION 21
TOWNSHIP 31N
RANGE 4 E

CORNING
CITY, VILLAGE, TOWN



NOT TO SCALE
BEARINGS REFERENCED
TO LINCOLN COUNTY
COORDINATE SYSTEM

COORDINATES ARE REFERENCED
TO LINCOLN COUNTY COORDINATE
SYSTEM AS DEVELOPED BY THE WI.
DEPARTMENT OF TRANSPORTATION
AND ARE BASED ON GPS OBSERVATIONS
TO CONTROL POINTS AS SUPPLIED BY
LINCOLN COUNTY.

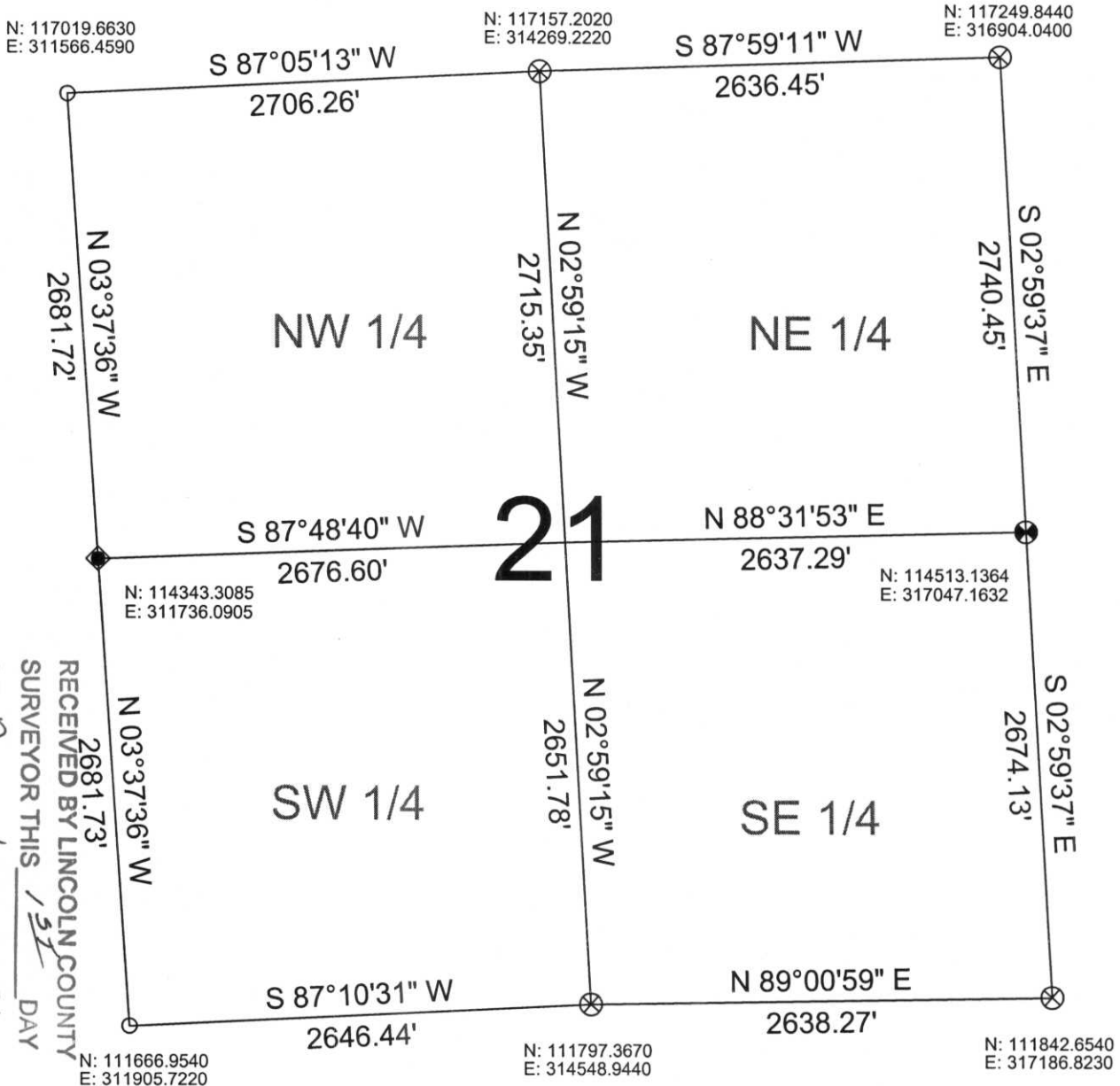
CERTIFIED CORRECT:

Ronald K. Jacobson

Ronald Jacobson RLS 2059-008

Registered Land Surveyor

DATE: November 30, 2006



RECEIVED BY LINCOLN COUNTY
SURVEYOR THIS 15TH DAY
OF December 20 06
Tommy Datta
COUNTY SURVEYOR

LEGEND

- FOUND 1" IRON PIPE
- ⊗ SET LINCOLN COUNTY BERNSTEN MOMUMENT
- ⊗ FOUND LINCOLN COUNTY BERNSTEN MOMUMENT
- ◆ SET 3/4" IRON ROD

DRAFTED BY: Lee
DATE: November 30, 2006

Central Wisconsin Engineers & Architects
5707 Schofield Ave.
Weston, Wisconsin 54476
(715) 359-9400